

Configuration

Anybus IPconfig utility and Serial/IP COM-port redirection software

The Anybus IPconfig utility is a Windows-based configuration utility to set TCP/IP network settings in Anybus devices. It scans the Ethernet network for connected devices and allows the user to set the IP address, netmask, default gateway, DNS and hostname for each unit.

The Serial/IP COM-port redirection software is used during operation to create virtual COM-port(s) in a personal computer, and manages communication between the computer and the Anybus Serial Server.

Installation Procedure

1. Go to <http://www.anybus.com/products/abxss.shtml> and select **File/Document Downloads**.
2. Download and install the **IPconfig** package.
3. Download and install the **Serial/IP COM-port redirection software** package. Configure with port 7000 and the IP address of your choice.
4. If required, download the **Serial/IP software Quick Start Guide** to learn how to set up SerialIP

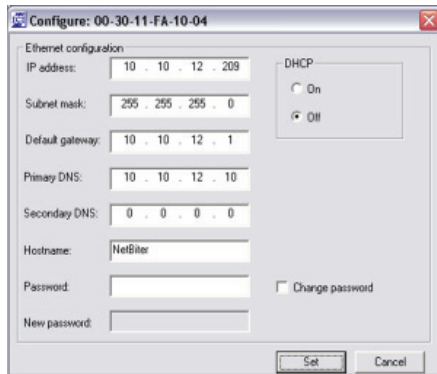
Scanning for connected devices

First ensure that you have connected the Anybus units you want to install on the same Ethernet network the PC is connected to. Use standard Ethernet cables, straight-through or cross-over cables depending on how you connect to the device.

When IPconfig is started, it will scan the Ethernet network for Anybus devices. All detected devices will be presented in a list in the main window. To force a new scan for devices, click on **Scan**.

Changing IP settings

To change the IP settings on a detected device, double-click the device in the list of devices. This will open up a dialog in which you can enter the desired IP configuration. The default password for authentication of the new settings is **"admin"**.



! Do not enable DHCP if there is no available DHCP server on the network.

Click **Set** to restart the Anybus device with the new settings applied.

Test the new settings by opening a web browser and entering the assigned IP address. To discover the assigned IP address when using DHCP, simply perform a new scan with the IPconfig utility and locate the device in the list.

Technical data

Power Supply: 9–24 V AC/DC (2W)

Temperature range: Operating: -40 to +65 °C
Storage: -40 to +85 °C

Humidity range: 5–95 % RH, non-condensing

Mounting option: DIN rail (EN 50022)

CE certification: According to EN 55011:2007 and EN 61000-6-2:2005



INSTALLATION GUIDE

Anybus[®] Serial Server

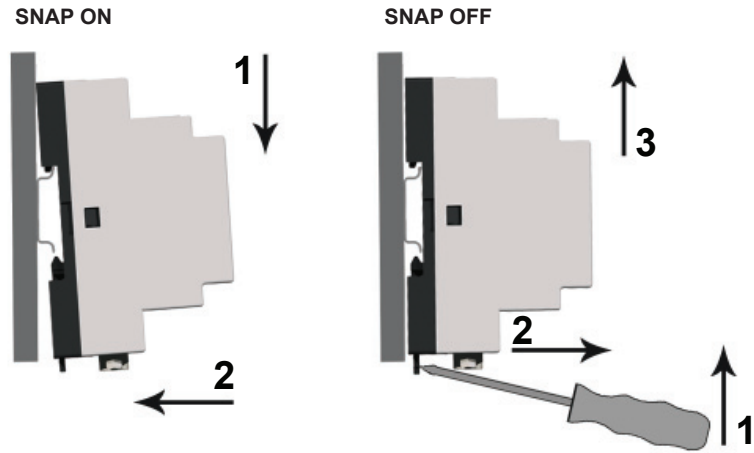
SP1667 2.40



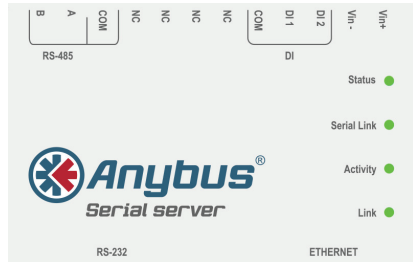
HMS Industrial Networks
Mailing address: Box 4126, 300 04 Halmstad, Sweden
Visiting address: Stationsgatan 37, Halmstad, Sweden

E-mail: info@hms-networks.com
Web: www.anybus.com

DIN Rail Mounting



LED Indicators



Name	Color	Function
Status	OFF	No power
	Green (steady)	Normal operation
	Red (steady)	Hardware fault
	Red (flashing)	Error during initialization
Serial Link	Green (flashing)	Serial Packet receive
	Red (flashing)	Serial Packet transmit
	Orange	Boot-up
Activity	Green (flashing)	Packet receive
	Red (flashing)	Ethernet Collision
Link	Green (steady)	Ethernet network detected, 10Mbps
	Orange (steady)	Ethernet network detected, 100Mbps

Connections



Power + RS-485 Serial Port
(Terminal block)



RS-232 Serial Port
(D-sub) Ethernet Port
(RJ-45)

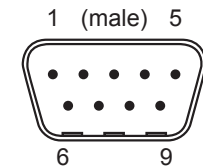
Power + RS-485 Serial (Terminal Block)

Pin	Description
24	Vin +
23	Vin -
16-22	Not used
15	Common
14	RS-485 Line A
13	RS-485 Line B

! Field wiring terminals must be connected with minimum wire size 24 AWG.

RS-232 Serial Port (D-sub)

Pin	Description
1	CD (Carrier Detect)
2	Rx (Receive)
3	Tx (Transmit)
4	DTR (Data Terminal Ready)
5	GND
6	DSR
7	RTS (Request To Send)
8	CTS (Clear To Send)
9	RI (Ring Indicator)



Ethernet Port (RJ-45)

Pin	Description
1	TD+
2	TD-
3	RD+
4, 5, 7, 8	Termination
6	RD-

