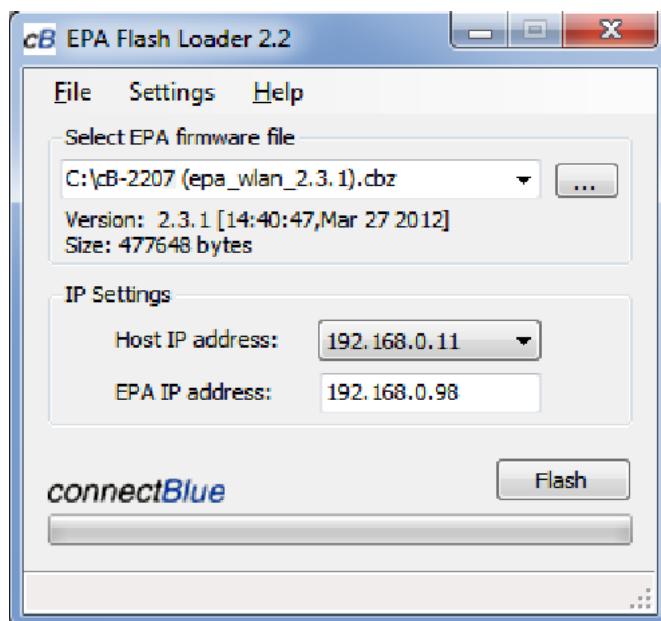


# User Guide

**NOTE!:** This update is only applicable for Anybus Wireless Bridge Bluetooth products.  
Article numbers: 023140-B and 024130-B.

The firmware in the Anybus Wireless Bridge can be updated using connectBlue EPA Flash Loader tool. The firmware upgrade procedure is done using BOOTP/TFTP, if possible an AT command will be used to trigger the download.



To upgrade the firmware, follow these steps.

1. The EPA Flash Loader is a C# project, and it requires .NET 2.0 to be able to run
2. Download, unzip and install cB-2155 (EPA Flash Loader)
3. Run the program (Start->Programs->connectBlue->EPA Flash Loader->EPA Flash Loader)
4. Connect the Wireless Bridge to the computer via a HUB or Switch. (If the Wireless Bridge is connected directly to a PC, please see the Limitations section)
5. Start by selecting a valid cbz-file, this contains boot loader, firmware and application (note it is also possible to select a single bin-file).
6. Select "Host IP Address", typical 192.168.0.1, note that a static IP address must be used.
7. The Wireless Bridge IP Address should be the Address that the Wireless Bridge is using, typical 192.168.0.98.
8. Press Flash and the firmware upgrade will begin
9. If an old version of the boot loader is used, it will need to hold the 'Smart button' and then Power Cycle the Wireless Bridge for the download to start.

## Advanced Mode

1. When a cbz-file is selected, it is possible to use "Advanced Mode"
2. When selecting "Advanced mode", it is possible to select what files in the cbz-file to download, note that the boot loader.bin is not selected by default and should only be selected if you're are having problems.
3. It's also possible to specify TCP Port number (default: 8080) and AT Password (by default it's not used).

## Flash Modes

1. Default Mode will send a AT command to start the download, if this fails (or times out) you will need to hold the 'Smart button' and then Power Cycle the Wireless Bridge for the download to start
2. Recover Mode will NOT send any AT commands, hold the 'Smart button' and then Power Cycle the Wireless Bridge to start the download

## Limitations

- Only the primary network card is possible to use
- When the Mode button is pressed during power up, the boot loader is active for about 3 seconds. If connected directly to a PC or to a Switch with auto MDI/MDI-X, it's possible that the Ethernet link isn't established within this time, causing the flash procedure to fail. This timeout is increased for newer boot loader versions of the Wireless Bridge and is not an issue with devices with version number  $\geq 2.0$ .
- If the Ethernet Cable on the PC is unplugged while starting the EPA Flash Loader, the correct "Host IP address:" will not be possible to select in the EPA Flash Loader tool