

Model Information



■ Features

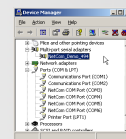
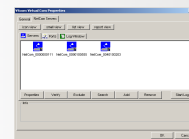
- Controls 8 RS232 devices located virtually anywhere via Ethernet, WLAN or Internet
- Controls 8 Digital-Input and 8 Digital-Output signals
- LAN 1000/100/10 Ethernet auto-detect
- Supply via Power over Ethernet 802.3af
- NetCom Manager automatically finds NetCom+ devices in the network
- Configuration over Driver Panels, serial Port, Telnet, WEB Browser, SNMP
- Automatic mode switching between Driver and Raw Mode
- Supports TCP/IP, UDP, Telnet, DHCP, ICMP, HTTP, SNMP V1/2c/3, DNS, PPP, openVPN, Modbus/TCP
- SSL/AES-256 encryption on Ethernet, WLAN and Internet
- Optional: Wireless network IEEE 802.11b/g/n

[Contact Online...](#)

NetCom Plus 811 DIO

[Quick Link:](#) | [Features](#) | [More Pictures](#) | [Overview](#) | [Application](#) | [Interface](#) | [Serial Performance](#) | [Digital Input / Output](#) | [Operating Modes](#) | [Power and Environment](#) | [Standards](#) | [Special Features](#) | [Security](#) | [Ordering Information](#) | [Options](#) | [Packaging](#) |

■ More Pictures



Port 1	Port 2
PortType (userdef)	RS232
BaseRate	40000000
PortType*	RS232
BaseRate*	19200
Manual*	38400
FlowType*	RTS
Device*	RTS
Parity*	None
Stopbit*	1
RTFifoLength	1024
RTRequestLevel*	500
TxFifoLength	1024
TxRequestLevel*	500

Click on the thumbnails for the large picture ...

[>Back to top](#)

■ Overview

The NetCom+ 811 DIO is an industrial-strength network-based serial device servers for connecting eight RS232 devices like CNC, PLC, weighting scale, scanner and others directly to a network running TCP/IP. The driver for Windows operating system installs Virtual Com Ports. The network is Gigabit Ethernet or optionally wireless by WLAN 802.11b/g/n.

The 8 Digital-Input and 8 Digital-Output signals operate via known the protocol Modbus/TCP.

The NetCom+ 811 DIO Server uses a state-of-the art RISC processor for low power and cost effective design. Power supply is via DC adapter, or via Ethernet cable with POE IEEE 802.3af.

The serial ports enable data rates of up to 500kbps, including every non-standard bitrate. See the [FAQ](#).

NetCom+ can be configured over Driver Panels, WEB Browser, serial Port, Telnet, SNMP and serves as a transparent serial channel without platform and distance limitation. Modbus/TCP standard controls Digital-I/O function.

As modern devices the NetCom+ provide encryption for all communication.

■ Application

- Secure Remote Monitoring
- SCADA system
- Building automation system
- Self-service banking system

- Industrial / Factory / Laboratory automation
- Automatic warehouse control system
- Wafer fabrication system
- Other remote and distributed serial devices control

■ Interface

Ethernet interface

Auto-detecting 1000BaseT/100BaseTx/10BaseT (GigaLAN)
Connector 8P8C (RJ45)

Wireless interface

Optional via internal module
IEEE 802.11b/g/n operation in Access Point or Client Mode

Protocols

TCP/IP, UDP, Telnet, PPP, DHCP, ICMP, HTTP, LPD, SNMP V1/2c/3, DNS, openVPN, Modbus/TCP

No. of serial port

8x DSUB 9 male connector (as PC)
16 sets of clamps for Digital-I/O

Serial interface

RS232

Signals

TxD,RxD, RTS,CTS, DTR,DSR, DCD, RI, GND

[>Back to top](#)

■ Serial Performance

Speed

200 bps to 500 kbps
Supports non-standard baudrates

Parity

None, even, odd, mark, space

Data bits

7, 8

Stop bits

1, 2

[>Back to top](#)

■ Digital Input / Output

Input

8x isolated input signals

Contact

Wet contacts on clamp pairs provide 5V.
To activate close the contact by button / switch / relay / ...

Output

8x relay signals on three clamps (normal open/closed)

Switching

- 1A 30V DC
- 0.25A 250V AC

[>Back to top](#)

■ Operating Modes

Driver Mode serial

VScom Driver for Windows up to 10, Server up to 2008 R2, both x86 and x64 Editions.
The Driver creates a virtual Com port, using VScom NetCom protocol.

Other Modes

TCP Raw Server, TCP Raw Client, Null Modem Tunnel, UDP Mode, Print Server and IP Modem

Digital-I/O

Modbus/TCP to get values and control output signals

[>Back to top](#)

■ Power and Environment

Connector

3-pin Terminal Block with Protective Earth

Power requirements

15 - 54V DC, 0.4A @ 19V, 8W

Power over Ethernet

Class 0 Device (802.3af). Typical consumption is 6W.

Dimension

196×147×44 mm³ (W×L×H)

Operating Temp

-20°C - 65°C

Storage Temp

-20°C - 85°C

Case	SECC sheet metal (1mm)
Weight	0.9kg
Mounting	<ul style="list-style-type: none"> • 19-inch Rack • Wall mount

[>Back to top](#)

■ Standards

Declarations	CE
Safety	EN 60950-1
ESD	<p>EN 61000-4-2 8kV contact 16kV air for</p> <ul style="list-style-type: none"> • Serial Ports • Ethernet • DC Power connector
EMI	<ul style="list-style-type: none"> • EN 55022 Class A • EN 61000-3-2 • EN 61000-3-3
EMS (EN 55024)	EN 61000-4-3
Power (EN 55024)	<ul style="list-style-type: none"> • EN 61000-4-4 • EN 61000-4-5 • EN 61000-4-6

[>Back to top](#)

■ Special Features

Installation	For easy installation the configuration utility NetCom Manager automatically finds NetCom+ devices in the network
Operating mode	Automatic mode switching between Driver and TCP RAW Server mode.
PPP Access	Dial-In to a modem attached to a serial port using Point to Point Protocol. TCP/IP is transported over the serial line, allowing access to configuration and the serial ports, even without Ethernet.
Configuration	Configuration over Driver Panels, NetCom Manager, WEB Browser, serial console, Telnet, SNMP
Firewall	Special precautions for Firewall environments
Firmware	Firmware update over WEB Browser
LEDs	LEDs for Power, Ready, serial Tx, Rx, Ethernet Link, Speed

[>Back to top](#)

■ Security

Password access	Every capabilities of configuration use the same password including SNMP V3
Secure communication	<p>OpenVPN™ SSL tunnel provides security on Ethernet and Internet. The tunnel protects configuration and serial data, especially convenient to use across the Internet. OpenVPN software is available for many systems, including Windows, Linux and Mac OS. Strong encryption by AES up to 256 bit keys.</p>

[>Back to top](#)

■ Ordering Information

6683	NetCom Plus 811 DIO (8x RS232, 8+8x Digital-I/O, supply via Ethernet)
-------------	---

[>Back to top](#)

■ Options

6689

WLAN Kit internal
internal module 802.11b/g/n, pigtail and antenna
Purchase time option, not for later retrofitting

6030

Power supply adapter 15V DC, 1A; with terminal block

[661](#)

Serial Null-Modem adapter 9PF-9PF, change male to female

[>Back to top](#)

■ Packaging

Packing list

- NetCom Plus Serial Device Server
- Mounting brackets for 19-inch rack
- Wall mount plates
- Terminal blocks for Digital-I/O
- Terminal block for Power Supply
- CD-ROM with Driver and configuration software

[>Back to top](#)

NetCom Plus 811 DIO

[>Back](#)



Model NetCom Plus 811 DIO with WLAN

[>Back](#)



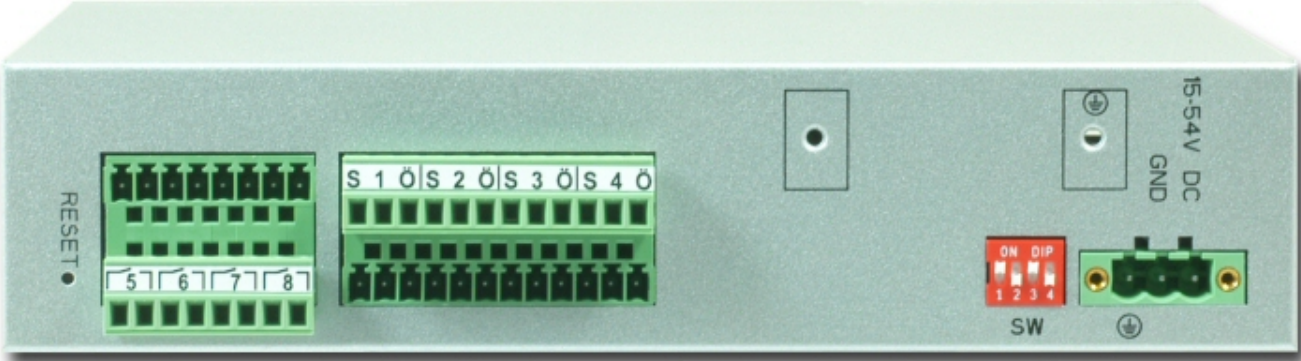
Rackmount Kit

[>Back](#)



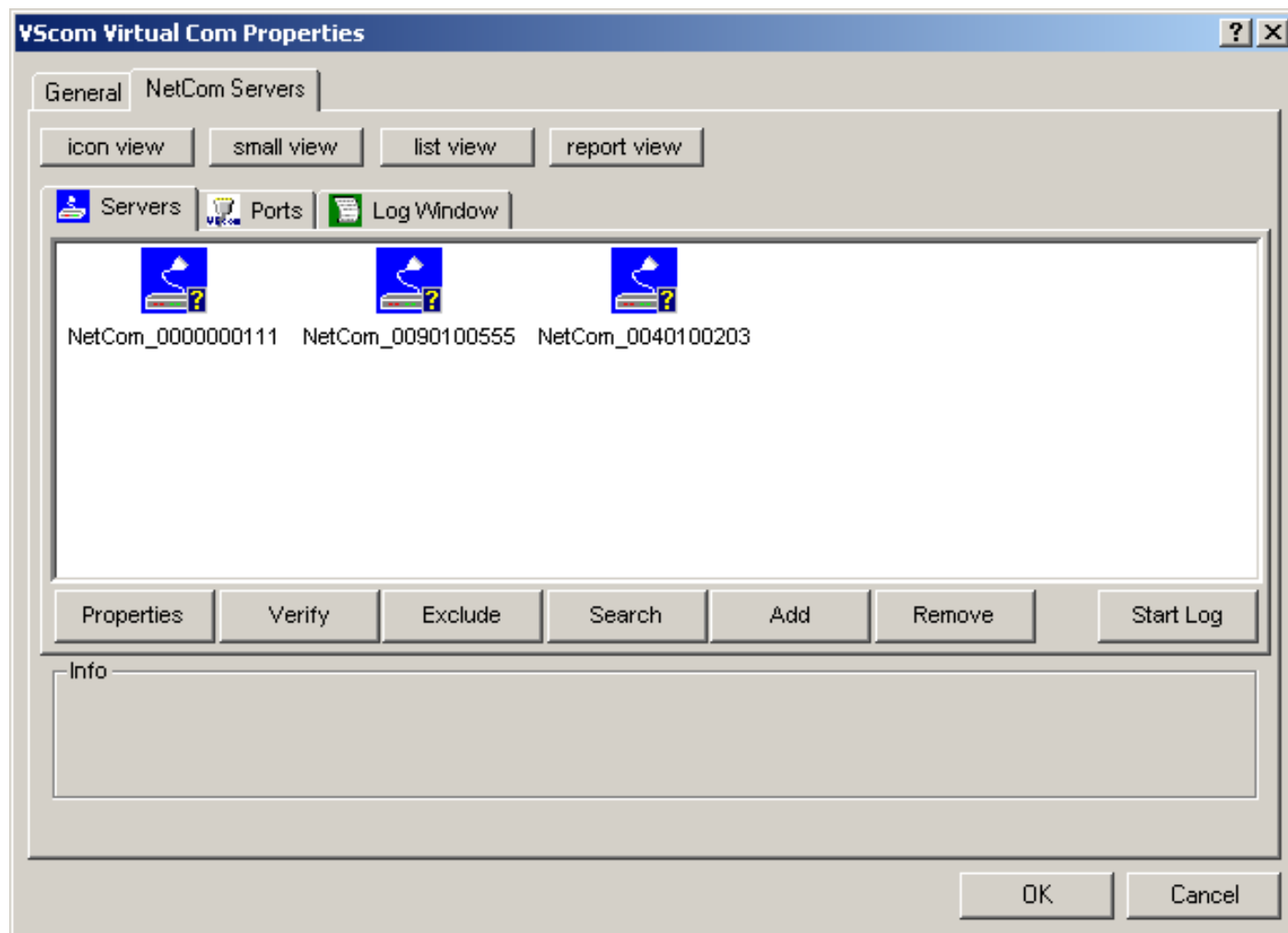
NetCom Plus 811 DIO rear side with sample Terminal blocks

[>Back](#)



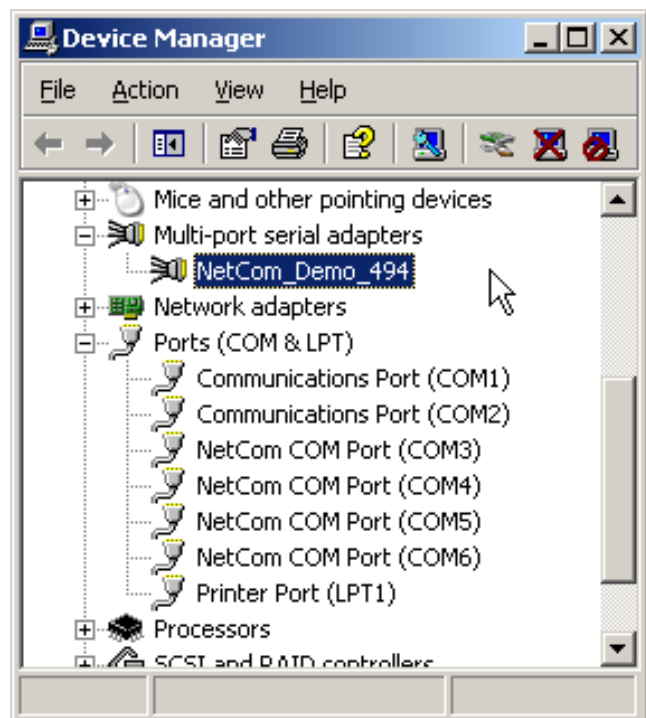
NetCom Manager

[>Back](#)



NetCom Plus in Device Manager

[>Back](#)



Serial Port in Web Interface

[>Back](#)

Port 1	
PortType (current)	rs232
Baud Base	60000000
PortType ?	<input type="text" value="rs232"/>
Baudrate ?	<input type="text" value="38400"/>
Manual ?	38400
FlowType ?	<input type="text" value="None"/>
DataBit ?	<input type="text" value="8"/>
Parity ?	<input type="text" value="None"/>
StopBit ?	<input type="text" value="1"/>
RxFifoLength	1024
RxTriggerLevel ?	<input type="text" value="224"/>
TxFifoLength	1024
TxTriggerLevel ?	<input type="text" value="800"/>