

## Model Information



### ■ Features

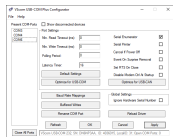
- **Preliminary**
- 1 x RS232/422/485 port
- USB 2.0 Full Speed interface
- 2.5kV isolation per serial port
- USB and serial ports ESD protected
- Robust metal case
- Jumperless, DIP ports configuration
- Serial speed max. 1000(RS232) / 3000(RS485) kbps
- DIN-Rail and Wall mount options
- Bus powered, no external power supply
- Wide range operating temperature (-25°C - +75°C)
- slim case

[Contact Online...](#)

# USB-COM Plus Mini ISO (USB-COMi SI-M)

Quick Link: | [Features](#) | [More Pictures](#) | [Overview](#) | [USB Interface](#) | [Serial Interface](#) | [Software](#) | [Power and Environment](#) | [Ordering Information](#) | [Options](#) | [Packaging](#) |

### ■ More Pictures



Click on the thumbnails for the large picture ...

[>Back to top](#)

### ■ Overview

The modern USB-COM Plus Mini ISO adapter connects one RS232 or RS422/485 device to your PC by a USB 2.0 Full Speed port. The serial port is isolated for 2.5kV. The serial port and USB are ESD protected, compliant to IEC 61000-4-2 (8kV contact/16kV air discharges).

The serial port supports RS232, RS422 and RS485 in Full-/Half-Duplex operation mode. The operation mode of the serial port is easy configured by one DIP. The configuration also activates built-in RS485 termination if required, no jumpers needed. Standard Drivers are available for all major operating systems.

The USB 2.0 Full-Speed enables serial data rates of up to 3Mbps in RS422/485 or 1000kbps in RS232 modes. The device also allows every non-standard bitrate up to 960 kbps.

The USB-COM Plus Mini ISO is an alternative to the VScom USB-COMi SI-M.

All USB-COM Plus devices can be used to expand the serial ports for [NetCom Plus Device Servers](#).

### ■ USB Interface

#### USB-Input

USB 2.0 Full Speed, USB 1.1 compliant

#### Connector

USB type B

## Protection

Compliant with IEC 61000-4-2 ESD 8kV contact / 16kV air discharge

[>Back to top](#)

## Serial Interface

### Port

- 1 x RS232/422/485 configured by DIP switch
- RS485 Termination configured by DIP switch
- Polarization/BIAS not required
- Connector DSub-9 male

### Speed

- RS232: 180bps - 921.6/1000kbps
- RS422: up to 3Mbps
- RS485: up to 3Mbps

### Available Modes

- RS232 full duplex
- RS422 full duplex
- RS485 4-wire, full duplex
- RS485 2-wire, half duplex (bus-mode)

### Signals

- RS232: TxD, RxD, RTS, CTS, GND
  - RS422: Tx+/-, Rx+/-, GND
  - RS485 4-wire: Tx+/-, Rx+/-, GND
  - RS485 2-wire: Data+/-, GND
- All signals isolated for 2.5kV

### Protection

- Galvanically isolated 2.5kV
- Compliant with IEC 61000-4-2 ESD 8kV contact / 16kV air discharge

### Configuration

One DIP switch defines operation mode and RS422/485 termination

[>Back to top](#)

## Software

### Driver

- Windows 2000 to Windows 10 (x86 and x64)
- Windows Server 2000 to 2012 (x86 and x64)
- Linux (Kernel 2.6 and later built-in)
- Mac OS X

Installation by automatic download from the Internet

[>Back to top](#)

## Power and Environment

### Connector

USB bus powered, no external supply

### Protection

Compliant with IEC 61000-4-2 ESD 8kV contact / 16kV air discharge

### Dimension

50×72×22 mm<sup>3</sup> (W×L×H) Case  
72×72×22 mm<sup>3</sup> (W×L×H) with mounting wings

### Operating Temp

-25°C - 75°C

### Storage Temp

-30°C – 85°C

### Case

SECC sheet metal (0.8mm)

### Weight

150g

### Mounting

- DIN-Rail (optional)
- Wall mount (optional)

### LEDs

LEDs for Power, serial Tx, Rx

[>Back to top](#)

## Ordering Information

**656** USB-COM Plus Mini ISO (1x RS232/422/485, isolated)

**655** USB-COM Plus Mini (1x RS232/422/485, non-isolated)

[>Back to top](#)

## ■ Options

[DK 35A](#)

DIN-Rail mounting kit

**663**

6-pin Terminal block adapter to DB9 female

[661](#)

Serial Null-Modem adapter 9PF-9PF, change male to female

[>Back to top](#)

## ■ Packaging

**Packing list**

USB-COM Plus Mini ISO device

[>Back to top](#)



# USB-COM Plus Configurator

[>Back](#)

VScom USB-COM Plus Configurator

File Help

Present COM-Ports  Show disconnected devices

COM3  
COM4  
COM6

Port Settings

Min. Read Timeout (ms):

Min. Write Timeout (ms):

Polling Period:

Latency Timer:

Serial Enumerator

Serial Printer

Cancel If Power Off

Event On Surprise Removal

Set RTS On Close

Disable Modem Ctrl At Startup

Default Settings

Optimize for USB-COM

Optimize for USB-CAN

Baud Rate Mappings

Buffered Writes

Rename COM Port

Global Settings

Ignore Hardware Serial Number

Reload Driver

Refresh OK Cancel Apply

Close All Ports

VScom USB-COM 232, SN: DN6NP3AA, ID: 4036015, LocalID: 31; Open COM Ports: 0

---

## Terminal Block Adapter

[>Back](#)

