

Model Information



■ Features

- 4 x RS232/422/485 ports
- USB 2.0 High Speed interface
- USB, serial ports and power supply ESD protected
- Robust metal case
- Ports configuration: via software or DIP-switch
- Serial speed max. 1000(RS232) / 12000(RS485) kbps
- 19-inch and Wall mounting options
- Bus powered or ext. DCin 9-54V
- Easy port expansion via USB-Out type A connector
- Wide range operating temperature (-25°C - +75°C)

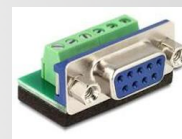
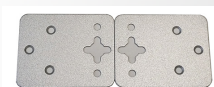
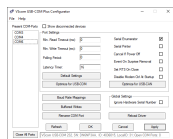
[Contact Online...](#)

USB-4COM Plus

(USB-4COM-M, USB-4COMi-M, USB-4COM-PRO)

Quick Link: | [Features](#) | [More Pictures](#) | [Overview](#) | [USB Interface](#) | [Serial Interface](#) | [Software](#) | [Power and Environment](#) | [Ordering Information](#) | [Options](#) | [Packaging](#) |

■ More Pictures



Click on the thumbnails for the large picture ...

[>Back to top](#)

■ Overview

The modern USB-4COM Plus adapter connects 4 x RS232 or RS422/485 devices to your PC by one USB 2.0 High Speed port. The serial ports, USB and the power supply are ESD protected, compliant to IEC 61000-4-2 (8kV contact/16kV air discharges). USB-4COM Plus works in bus-powered mode, but a DCin connector for external wide range voltage is also provided.

All serial ports support RS232, RS422 and RS485 in Full-/Half-Duplex operation modes. The operation modes of the serial ports are either configured by a single DIP switch common for all ports, or for each port individually by software. The configuration also activates built-in RS485 termination if required, no jumpers needed. Standard Drivers are available for all major operating systems.

The USB 2.0 High-Speed enables serial data rates of up to 12Mbps in RS422/485 or 1000kbps in RS232 modes. The device also allows every non-standard bitrate up to 3.5Mbps.

A USB-out (type A) connector at the rear side allows easy expansion of serial ports by simple concatenation of further USB-COM Plus modules; we call it "USB-Through" feature. All USB-COM Plus devices can be used to expand the serial ports for [NetCom Plus Device Servers](#).

■ USB Interface

USB-Input

USB 2.0 High Speed, USB 1.1 compliant

Connector

USB type B

Protection

Compliant with IEC 61000-4-2 ESD 8kV contact / 16kV air discharge

USB-Out

USB 2.0 High Speed, USB 1.1 compliant

| | |
|-------------------|--|
| Connector | USB type A (at rear side) Used to connect more USB-(x)COM modules for port expansion. |
| Protection | Compliant with IEC 61000-4-2 ESD 8kV contact / 16kV air discharge |

[>Back to top](#)

■ Serial Interface

| | |
|------------------------|--|
| Ports | <ul style="list-style-type: none"> • 4 x RS232/422/485 configurable by software • RS485 Termination configurable by software • Polarization/BIAS not required • Connector DSub-9 male <p>For configuration details see below ...</p> |
| Speed | <ul style="list-style-type: none"> • RS232: 180bps - 921.6/1000kbps • RS422: up to 12Mbps • RS485: up to 12Mbps |
| Available Modes | <ul style="list-style-type: none"> • RS232 full duplex • RS422 full duplex • RS485 4-wire, full duplex • RS485 2-wire, half duplex (bus-mode) <p>For configuration details see below ...</p> |
| Signals | <ul style="list-style-type: none"> • RS232: TxD, RxD, RTS, CTS, DTR, DSR, DCD, GND • RS422: Tx+/-, Rx+/-, GND • RS485 4-wire: Tx+/-, Rx+/-, GND • RS485 2-wire: Data+/-, GND |
| Protection | Compliant with IEC 61000-4-2 ESD 8kV contact / 16kV air discharge |
| Configuration | <p>Either all ports operate in one common mode, configured by a single DIP switch, or each port is individually configured by a software:</p> <ul style="list-style-type: none"> • Windows: USB-COM Configuration Utility • All OS: Terminal Emulation |

[>Back to top](#)

■ Software

| | |
|---------------|--|
| Driver | <ul style="list-style-type: none"> • Windows 2000 to Windows 10 (x86 and x64) • Windows Server 2000 to 2012 (x86 and x64) • Linux (Kernel 2.6 and later built-in) • Mac OS X <p>Installation by automatic download from the Internet</p> |
|---------------|--|

[>Back to top](#)

■ Power and Environment

| | |
|--------------------------|---|
| Power Consumption | <ul style="list-style-type: none"> • Bus-powered: 5V 500mA via USB • Self-powered: DCin 9 - 54V, 3W |
| USB Supply | <p>Bus-powered possible on standard USB ports. The DCin supply is compulsory to support USB-Out. It is also necessary for USB ports with lesser power output.</p> |
| DCin Supply | <ul style="list-style-type: none"> • DCin specs: Wide range 9 - 54V DC, 3W • Connector: 3-pin industrial Terminal Block (Plus / Minus / Protective Earth) |
| DCin Protection | Compliant with IEC 61000-4-2 ESD 8kV contact / 16kV air discharge |
| Dimension | 196×147×44 mm ³ (W×L×H) |
| Operating Temp | -25°C - 75°C |
| Storage Temp | -30°C - 85°C |
| Case | SECC sheet metal (0.8mm) |

Weight

0.9kg

Mounting

- 19-inch Rack
- Wall mount

LEDs

LEDs for Power, Ready, serial Tx, Rx

[>Back to top](#)**■ Ordering Information****609**

USB-4COM Plus (4x RS232/422/485, non-isolated, expandable)

611

USB-4COM Plus ISO (4x RS232/422/485, isolated, expandable)

[>Back to top](#)**■ Options****6031**

DC Power supply adapter 12V @ 1A

663

6-pin Terminal block adapter to DB9 female

661

Serial Null-Modem adapter 9PF-9PF, change male to female

[>Back to top](#)**■ Packaging****Packing list**

- USB-4COM Plus device
- Mounting brackets for 19-inch rack
- Wallmount plates
- CD-ROM with configuration software

[>Back to top](#)

USB-4COM Plus

[>Back](#)



USB-4COM Plus back side

[>Back](#)



USB-COM Plus Configurator

[>Back](#)

VScom USB-COM Plus Configurator

File Help

Present COM-Ports Show disconnected devices

COM3
COM4
COM6

Port Settings

Min. Read Timeout (ms):

Min. Write Timeout (ms):

Polling Period:

Latency Timer:

Serial Enumerator

Serial Printer

Cancel If Power Off

Event On Surprise Removal

Set RTS On Close

Disable Modem Ctrl At Startup

Default Settings

Optimize for USB-COM

Optimize for USB-CAN

Baud Rate Mappings

Buffered Writes

Rename COM Port

Global Settings

Ignore Hardware Serial Number

Reload Driver

Refresh OK Cancel Apply

Close All Ports

VScom USB-COM 232, SN: DN6NP3AA, ID: 4036015, LocalID: 31; Open COM Ports: 0

Rackmount Kit

[>Back](#)



Wall Mounting Kit

[>Back](#)



Terminal Block Adapter

[>Back](#)

