

Model Information



■ Features

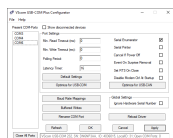
- 8 x RS232/422/485 ports
- USB 2.0 High Speed interface
- 2.5kV isolation per serial port
- USB, serial ports and power supply ESD protected
- Robust metal case
- Ports configuration: via software or DIP-switch
- Serial speed max. 1000(RS232) / 12000(RS485) kbps
- 19-inch and Wall mounting options
- Wide range DC-in 9-54V, 4W
- Easy port expansion via USB-Out type A connector
- Wide range operating temperature (-25°C - +75°C)

[Contact Online...](#)

USB-8COM Plus ISO

[Quick Link:](#) | [Features](#) | [More Pictures](#) | [Overview](#) | [USB Interface](#) | [Serial Interface](#) | [Software](#) | [Power and Environment](#) | [Ordering Information](#) | [Options](#) | [Packaging](#) |

■ More Pictures



Click on the thumbnails for the large picture ...

[>Back to top](#)

■ Overview

The modern USB-8COM Plus ISO adapter connects 8 x RS232 or RS422/485 devices to your PC by one USB 2.0 High Speed port. The serial ports are individually isolated for 2.5kV. The serial ports, USB and the power supply are ESD protected, compliant to IEC 61000-4-2 (8kV contact/16kV air discharges). USB-8COM Plus ISO operates self-powered by an external DCin connector for wide range voltage.

All serial ports support RS232, RS422 and RS485 in Full-/Half-Duplex operation modes. The operation modes of the serial ports are either configured by a single DIP switch common for all ports, or for each port individually by software. The configuration also activates built-in RS485 termination if required, no jumpers needed. Standard Drivers are available for all major operating systems.

The USB 2.0 High-Speed enables serial data rates of up to 12Mbps in RS422/485 or 1000kbps in RS232 modes. The device also allows every non-standard bitrate up to 3.5Mbps.

A USB-out (type A) connector at the rear side allows easy expansion of serial ports by simple concatenation of further USB-COM Plus modules; we call it "USB-Through" feature. All USB-COM Plus devices can be used to expand the serial ports for [NetCom Plus Device Servers](#).

■ USB Interface

USB-Input

USB 2.0 High Speed, USB 1.1 compliant

Connector

USB type B

Protection

Compliant with IEC 61000-4-2 ESD 8kV contact / 16kV air discharge

USB-Out

USB 2.0 High Speed, USB 1.1 compliant

Connector	USB type A (at rear side) Used to connect more USB-(x)COM modules for port expansion.
Protection	Compliant with IEC 61000-4-2 ESD 8kV contact / 16kV air discharge
>Back to top	
■ Serial Interface	
Ports	<ul style="list-style-type: none"> • 8 x RS232/422/485 configurable by software • RS485 Termination configurable by software • Polarization/BIAS not required • Connector DSub-9 male For configuration details see below ...
Speed	<ul style="list-style-type: none"> • RS232: 180bps - 921.6/1000kbps • RS422: up to 12Mbps • RS485: up to 12Mbps
Available Modes	<ul style="list-style-type: none"> • RS232 full duplex • RS422 full duplex • RS485 4-wire, full duplex • RS485 2-wire, half duplex (bus-mode) For configuration details see below ...
Signals	<ul style="list-style-type: none"> • RS232: TxD, RxD, RTS, CTS, GND • RS422: Tx+/-, Rx+/-, GND • RS485 4-wire: Tx+/-, Rx+/-, GND • RS485 2-wire: Data+/-, GND All signals isolated for 2.5kV
Protection	<ul style="list-style-type: none"> • Galvanically isolated 2.5kV • Compliant with IEC 61000-4-2 ESD 8kV contact / 16kV air discharge
Configuration	Either all ports operate in one common mode, configured by a single DIP switch, or each port is individually configured by a software: <ul style="list-style-type: none"> • Windows: USB-COM Configuration Utility • All OS: Terminal Emulation
>Back to top	
■ Software	
Driver	<ul style="list-style-type: none"> • Windows 2000 to Windows 10 (x86 and x64) • Windows Server 2000 to 2012 (x86 and x64) • Linux (Kernel 2.6 and later built-in) • Mac OS X Installation by automatic download from the Internet
>Back to top	
■ Power and Environment	
Power Consumption	<ul style="list-style-type: none"> • Bus powered: not available • Self powered: DCin 9 - 54V, 6W
USB Supply	Not available, except for very high power USB ports.
DCin Supply	<ul style="list-style-type: none"> • DCin specs: Wide range 9 - 54V DC, 6W • Connector: 3-pin industrial Terminal Block (Plus / Minus / Protective Earth)
DCin Protection	Compliant with IEC 61000-4-2 ESD 8kV contact / 16kV air discharge
Dimension	196×147×44 mm ³ (W×L×H)
Operating Temp	-25°C - 75°C
Storage Temp	-30°C – 85°C
Case	SECC sheet metal (0.8mm)

Weight

0.9kg

Mounting

- 19-inch Rack
- Wall mount

LEDs

LEDs for Power, Ready, serial Tx, Rx

[>Back to top](#)**■ Ordering Information****613** USB-8COM Plus ISO (8x RS232/422/485, isolated, expandable)**612** USB-8COM Plus (8x RS232/422/485, non-isolated, expandable)[>Back to top](#)**■ Options****6031** DC Power supply adapter 12V @ 1A**663** 6-pin Terminal block adapter to DB9 female[661](#) Serial Null-Modem adapter 9PF-9PF, change male to female[>Back to top](#)**■ Packaging****Packing list**

- USB-8COM Plus ISO device
- Mounting brackets for 19-inch rack
- Wallmount plates
- CD-ROM with configuration software

[>Back to top](#)

USB-8COM Plus ISO

[>Back](#)



USB-8COM Plus ISO back side

[>Back](#)



USB-COM Plus Configurator

[>Back](#)

VScom USB-COM Plus Configurator

File Help

Present COM-Ports Show disconnected devices

COM3
COM4
COM6

Port Settings

Min. Read Timeout (ms):

Min. Write Timeout (ms):

Polling Period:

Latency Timer:

Serial Enumerator

Serial Printer

Cancel If Power Off

Event On Surprise Removal

Set RTS On Close

Disable Modem Ctrl At Startup

Default Settings

Optimize for USB-COM

Optimize for USB-CAN

Baud Rate Mappings

Buffered Writes

Rename COM Port

Global Settings

Ignore Hardware Serial Number

Reload Driver

Refresh OK Cancel Apply

Close All Ports

VScom USB-COM 232, SN: DN6NP3AA, ID: 4036015, LocalID: 31; Open COM Ports: 0

Rackmount Kit

[>Back](#)



Wall Mounting Kit

[>Back](#)



Terminal Block Adapter

[>Back](#)

