

Model Information



■ Features

- Consists of 2xUSB-8COM Plus 232
- 16 x RS232 ports
- USB 2.0 High Speed interface
- USB, serial ports and power supply ESD protected
- Robust metal case
- Serial speed max. 1000 kbps
- 19-inch and Wall mounting options
- External DCin 9-54V
- Easy port expansion via USB-Out type A connector
- Wide range operating temperature (-25°C - +75°C)

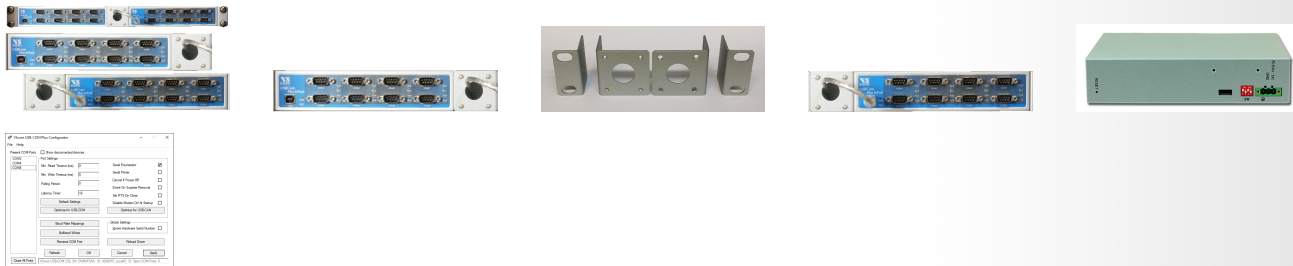
[Contact Online...](#)

USB-16COM Plus 232

(USB-16COM-RM)

Quick Link: | [Features](#) | [More Pictures](#) | [Overview](#) | [USB Interface](#) | [Serial Interface](#) | [Software](#) | [Power and Environment](#) | [Ordering Information](#) | [Options](#) | [Packaging](#) |

■ More Pictures



Click on the thumbnails for the large picture ...

[>Back to top](#)

■ Overview

The USB-16COM Plus 232 actually is a combination of two USB 8COM Plus 232 devices, mounted as a pair via a special Rack Mount kit. Both devices are connected via one USB cable, in essence the pair operates as one USB-COM with 16 simultaneous serial ports.

The USB-16COM Plus 232 adapter connects 16 x RS232 devices to your PC by one USB 2.0 High Speed port. The serial ports, USB and the power supply are ESD protected, compliant to IEC 61000-4-2 (8kV contact/16kV air discharges). Two DCin connectors for external wide range voltage are provided.

Standard Drivers are available for all major operating systems.

The USB 2.0 High-Speed enables serial data rates of up to 1000kbps in RS232. The device also allows every non-standard bitrate up to max. speed.

A USB-out (type A) connector at the rear side allows easy expansion of serial ports by simple concatenation of further USB-COM Plus modules; we call it "USB-Through" feature.

■ USB Interface

USB-Input

USB 2.0 High Speed, USB 1.1 compliant

Connector

USB type B

Protection

Compliant with IEC 61000-4-2 ESD 8kV contact / 16kV air discharge

USB-Out	USB 2.0 High Speed, USB 1.1 compliant
Connector	USB type A (at rear side) Used to connect more USB-(x)COM modules for port expansion.
Protection	Compliant with IEC 61000-4-2 ESD 8kV contact / 16kV air discharge

[>Back to top](#)

■ Serial Interface

Ports	<ul style="list-style-type: none"> • 16 x RS232 • Connector DSub-9 male
Speed	180bps - 921.6/1000kbps
Signals	TxD, RxD, RTS, CTS, DTR, DSR, DCD, GND
Protection	Compliant with IEC 61000-4-2 ESD 8kV contact / 16kV air discharge

[>Back to top](#)

■ Software

Driver	<ul style="list-style-type: none"> • Windows 2000 to Windows 10 (x86 and x64) • Windows Server 2000 to 2012 (x86 and x64) • Linux (Kernel 2.6 and later built-in) • Mac OS X <p>Installation by automatic download from the Internet</p>
---------------	--

[>Back to top](#)

■ Power and Environment

Power Consumption	Self powered: DCin 9 - 54V, 10W Sum of both USB-8COM Plus 232 modules
DCin Supply	<ul style="list-style-type: none"> • DCin specs: Wide range 9 - 54V DC, 2x5W • Connector: 3-pin industrial Terminal Block (Plus / Minus / Protective Earth)
DCin Protection	Compliant with IEC 61000-4-2 ESD 8kV contact / 16kV air discharge
Dimension	437×147×44 mm ³ (W×L×H)
Operating Temp	-25°C - 75°C
Storage Temp	-30°C – 85°C
Case	SECC sheet metal (0.8mm)
Weight	1.9kg
Mounting	19-inch Rack
LEDs	LEDs for Power, Ready, serial Tx, Rx

[>Back to top](#)

■ Ordering Information

6624	USB-16COM Plus 232 (16x RS232, non-isolated, expandable)
-------------	--

[>Back to top](#)

■ Options

6031	DC Power supply adapter 12V @ 1A
<u>661</u>	Serial Null-Modem adapter 9PF-9PF, change male to female

[>Back to top](#)

■ Packaging

Packing list	<ul style="list-style-type: none"> • 2x USB-8COM Plus 232 devices • RK-NCP Mounting kit for 19-inch rack
---------------------	--

[>Back to top](#)

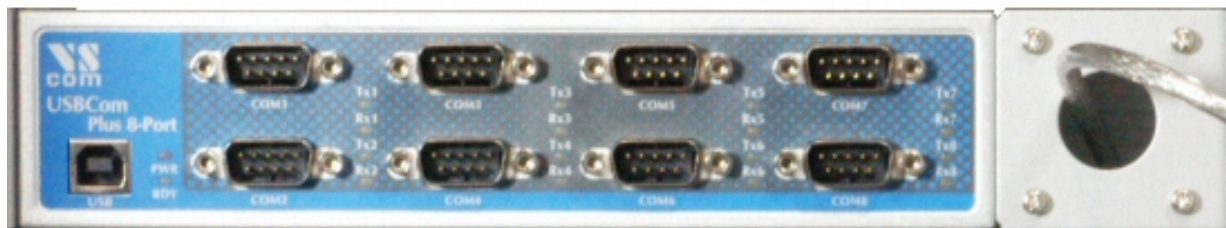
USB-16COM Plus 232

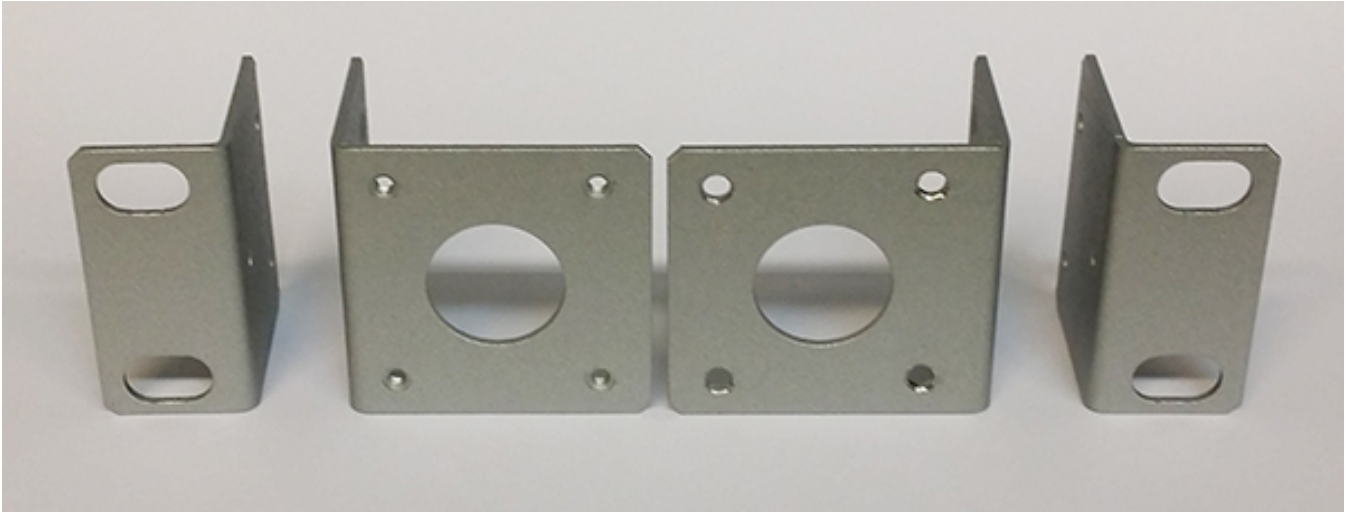
[>Back](#)



USB-16COM Plus 232 Left Part=USB-8COM Plus 232

[>Back](#)





USB-16COM Plus 232 Right Part=USB-8COM Plus 232

[>Back](#)



USB-8 Port back side

[>Back](#)



USB-COM Plus Configurator

[>Back](#)

VScom USB-COM Plus Configurator

File Help

Present COM-Ports Show disconnected devices

COM3
COM4
COM6

Port Settings

Min. Read Timeout (ms):

Min. Write Timeout (ms):

Polling Period:

Latency Timer:

Serial Enumerator

Serial Printer

Cancel If Power Off

Event On Surprise Removal

Set RTS On Close

Disable Modem Ctrl At Startup

Default Settings

Optimize for USB-COM

Optimize for USB-CAN

Baud Rate Mappings

Buffered Writes

Rename COM Port

Global Settings

Ignore Hardware Serial Number

Reload Driver

Refresh OK Cancel Apply

Close All Ports

VScom USB-COM 232, SN: DN6NP3AA, ID: 4036015, LocalID: 31; Open COM Ports: 0