

Model Information



■ Features

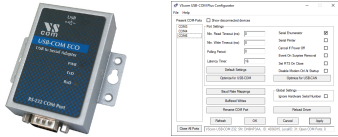
- 1 x RS232
- USB 2.0 Full Speed interface
- USB and serial ports ESD protected
- Robust metal case
- Serial speed max. 460.8 (500) kbps
- DIN-Rail and Wall mount options
- Bus powered, no external power supply
- Wide range operating temperature (-25°C - +75°C)
- slim case

[Contact Online...](#)

# USB-COM ECO (USB-COM-M)

Quick Link: | [Features](#) | [More Pictures](#) | [Overview](#) | [USB Interface](#) | [Serial Interface](#) | [Software](#) | [Power and Environment](#) | [Ordering Information](#) | [Options](#) | [Packaging](#) |

■ More Pictures



Click on the thumbnails for the large picture ...

[>Back to top](#)

■ Overview

The modern USB-COM ECO adapter connects one RS232 device to your PC by a USB 2.0 Full Speed port. The serial port and USB are ESD protected, compliant to IEC 61000-4-2 (8kV contact/16kV air discharges). Standard Drivers are available for all major operating systems. The USB 2.0 Full-Speed enables serial data rates of up to 500kbps, and also allows every non-standard bitrate. The USB-COM ECO is an alternative to the VScom USB-COM-M.

■ USB Interface

<b>USB-Input</b>	USB 2.0 Full Speed, USB 1.1 compliant
<b>Connector</b>	USB type B
<b>Protection</b>	Compliant with IEC 61000-4-2 ESD 8kV contact / 16kV air discharge

[>Back to top](#)

■ Serial Interface

<b>Port</b>	1 x RS232, Connector DSub-9 male
<b>Speed</b>	180bps – 460.8/500kbps
<b>Signals</b>	TxD, RxD, RTS, CTS, DTR, DSR, DCD, GND

**Protection**

Compliant with IEC 61000-4-2 ESD 8kV contact / 16kV air discharge

[>Back to top](#)**■ Software****Driver**

- Windows 2000 to Windows 10 (x86 and x64)
- Windows Server 2000 to 2012 (x86 and x64)
- Linux (Kernel 2.6 and later built-in)
- Mac OS X

Installation by automatic download from the Internet

[>Back to top](#)**■ Power and Environment****Connector**

USB bus powered, no external supply

**Power**

max. 1W

**Power supply**

max. 200mA via USB port

**Protection**

Compliant with IEC 61000-4-2 ESD 8kV contact / 16kV air discharge

**Dimensions**50×72×22 mm<sup>3</sup> (W×L×H) Case  
72×72×22 mm<sup>3</sup> (W×L×H) with mounting wings**Operating Temp.**

0°C - 60°C

**Storage Temp.**

-20°C - 85°C

**Case**

SECC sheet metal (1mm)

**Weight**

50 g

**Mounting**

- DIN-Rail (optional)
- Wall mount

**LEDs**

LEDs for Power, serial Tx, Rx

[>Back to top](#)**■ Ordering Information****633**

USB-COM ECO (1x RS232, non-isolated)

**634**

USB-COM ECO ISO (1x RS232, isolated)

[>Back to top](#)**■ Options****[DK 35A](#)**

DIN-Rail mounting kit

**[661](#)**

Serial Null-Modem adapter 9PF-9PF, change male to female

[>Back to top](#)**■ Packaging****Packing list**

USB-COM ECO device

[>Back to top](#)



# USB-COM Plus Configurator

[>Back](#)

VScom USB-COM Plus Configurator

File Help

Present COM-Ports  Show disconnected devices

COM3	Port Settings	Min. Read Timeout (ms):	<input type="text" value="0"/>	Serial Enumerator	<input checked="" type="checkbox"/>
COM4		Min. Write Timeout (ms):	<input type="text" value="0"/>	Serial Printer	<input type="checkbox"/>
COM6		Polling Period:	<input type="text" value="0"/>	Cancel If Power Off	<input type="checkbox"/>
		Latency Timer:	<input type="text" value="16"/>	Event On Surprise Removal	<input type="checkbox"/>
		<input type="button" value="Default Settings"/>		Set RTS On Close	<input type="checkbox"/>
		<input type="button" value="Optimize for USB-COM"/>		Disable Modem Ctrl At Startup	<input type="checkbox"/>
		<input type="button" value="Baud Rate Mappings"/>		<input type="button" value="Optimize for USB-CAN"/>	
		<input type="button" value="Buffered Writes"/>		Global Settings	
		<input type="button" value="Rename COM Port"/>		Ignore Hardware Serial Number <input type="checkbox"/>	
		<input type="button" value="Refresh"/>		<input type="button" value="Reload Driver"/>	
		<input type="button" value="OK"/>		<input type="button" value="Cancel"/>	
		<input type="button" value="Close All Ports"/>		<input type="button" value="Apply"/>	

VScom USB-COM 232, SN: DN6NP3AA, ID: 4036015, LocalID: 31; Open COM Ports: 0