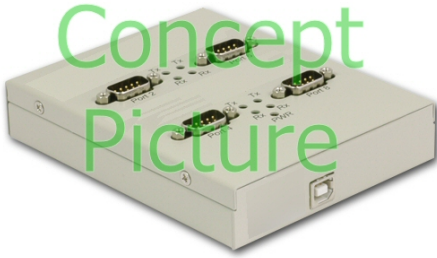


Model Information



■ Features

- Preliminary
- 4 x RS232 ports
- USB 2.0 High Speed interface
- USB, serial ports and power supply ESD protected
- Robust metal case
- Serial speed max. 460.8/500kbps
- Desktop Wall mounting options
- Bus powered, no external power supply
- Wide range operating temperature (-25°C - +75°C)

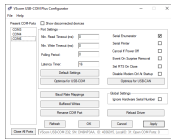
[Contact Online...](#)

USB-4COM ECO

(USB-4COM-M)

Quick Link: | [Features](#) | [More Pictures](#) | [Overview](#) | [USB Interface](#) | [Serial Interface](#) | [Software](#) | [Power and Environment](#) | [Ordering Information](#) | [Options](#) | [Packaging](#) |

■ More Pictures



Click on the thumbnails for the large picture ...

[>Back to top](#)

■ Overview

The modern USB-4COM ECO adapter connects 4 x RS232 devices to your PC by one USB 2.0 High Speed port. The serial ports, USB and the power supply are ESD protected. USB-4COM ECO operates in bus-powered mode, no external supply is required.

All serial ports support RS232 mode.

The USB 2.0 High-Speed enables serial data rates of up to 460.8 (500) kbps in RS232 modes. The device also allows every non-standard bitrate.

■ USB Interface

USB-Input	USB 2.0 High Speed, USB 1.1 compliant
Connector	USB type B

[>Back to top](#)

■ Serial Interface

Ports	4 x RS232, Connector DSub-9 male
Speed	180bps – 460.8/500kbps
Signals	TxD, RxD, RTS, CTS, DTR, DSR, DCD, GND

[>Back to top](#)

■ Software

Driver	<ul style="list-style-type: none"> ● Windows 2000 to Windows 10 (x86 and x64) ● Windows Server 2000 to 2012 (x86 and x64) ● Linux (Kernel 2.6 and later built-in)
---------------	--

- Mac OS X

Installation by automatic download from the Internet

[>Back to top](#)

■ Power and Environment

Connector USB bus powered, no external supply

Power max. 1.5W

Power supply max. 300mA via USB port

Dimension 102×130×25 mm³ (W×L×H)

Operating Temp -25°C - 75°C

Storage Temp -30°C – 85°C

Case SECC sheet metal (0.8mm)

Weight 0.9kg

Mounting

- Desktop
- Wall mount

LEDs LEDs for Power, Ready, serial Tx, Rx

[>Back to top](#)

■ Ordering Information

621 USB-4COM ECO (4x RS232)

[>Back to top](#)

■ Options

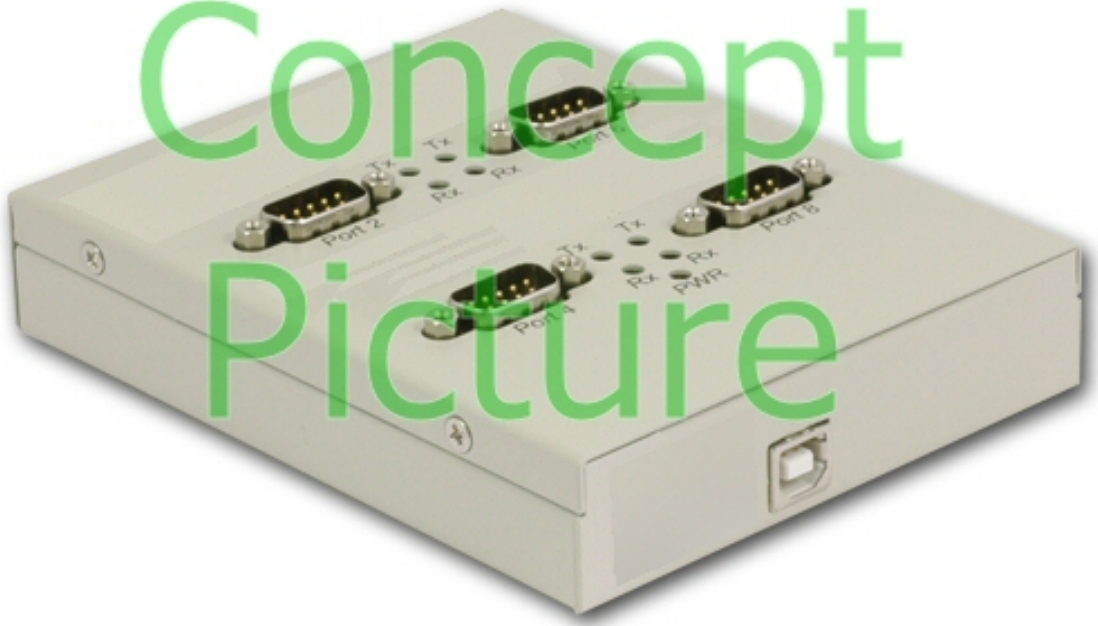
661 Serial Null-Modem adapter 9PF-9PF, change male to female

[>Back to top](#)

■ Packaging

Packing list USB-4COM ECO device

[>Back to top](#)



USB-COM Plus Configurator

[>Back](#)

VScom USB-COM Plus Configurator

File Help

Present COM-Ports Show disconnected devices

COM3
COM4
COM6

Port Settings

Min. Read Timeout (ms):

Min. Write Timeout (ms):

Polling Period:

Latency Timer:

Serial Enumerator

Serial Printer

Cancel If Power Off

Event On Surprise Removal

Set RTS On Close

Disable Modem Ctrl At Startup

Default Settings

Optimize for USB-COM

Optimize for USB-CAN

Baud Rate Mappings

Buffered Writes

Rename COM Port

Global Settings

Ignore Hardware Serial Number

Reload Driver

Refresh OK Cancel Apply

Close All Ports

VScom USB-COM 232, SN: DN6NP3AA, ID: 4036015, LocalID: 31; Open COM Ports: 0