

RESI-MBUSx-MODBUS

Collect metering data via MBUS standard interfaces

Modbus-IDA
the architecture for distributed automation

M-Bus

Our MBUS modules offer an easy-to-handle and cost effective solution to collect data from MBUS devices (water meter, heat meter, current meter, gas meter). Due to the open MODBUS standard that is used to read the data a broad range of applications is given in the fields of building management, building management systems and in industrial automation.

The meters from which data should be read are configured via PC software. The modules can be configured for communication with RS232 or RS485. Our module now periodically sends queries to the MBUS devices connected and stores the data internally in MODBUS holding register. A higher-ranking host system (PC, PLC, special hardware), can read the stored values via MODBUS RTU master protocol.



RESI-MBUSx-MODBUS

THE VERSIONS

The MBUS-MODBUS converter is available in four versions, that differ in the number of connectable MBUS devices: Depending on the version each converter can read data from up to 2/ 8 / 24 or 48 meters.

RESI-MBUST-MODBUS

Consisting of a serial MeterBus Converter, connection to host via RS232 or RS485 with up to 2 meter (=unit loads) and 20 variables, MBUS communication speed from 300bps to 38400 bps, Modbus connection with RS232 (9600 bps to 57600 bps), Mbus and Modbus are galvanically isolated, configuration via PC software, mountable on 35mm EN50022 DIN rail, weight 60g, dimensions (LxWxH) 17.5x90x58mm, power supply 24 VDC, power consumption <2.5W, Free software download from www.RESI.cc

RESI-MBUS-MODBUS

Consisting of a serial MeterBus Converter, connection to host via RS232 or RS485 with up to 8 meter (=unit loads) and 200 variables, MBUS communication speed from 300bps to 38400 bps, Modbus connection with RS232 (9600 bps to 57600 bps), Mbus and Modbus are galvanically isolated, configuration via PC software, mountable on 35mm EN50022 DIN rail, weight 60g, dimensions (LxWxH) 17.5x90x58mm, power supply 24 VDC, power consumption <2.5W, Free software download from www.RESI.cc

RESI-MBUS2-MODBUS

Consisting of a serial MeterBus Converter, connection to host via RS232 or RS485 with up to 24 meter (=unit loads) and 500 variables, communication speed from

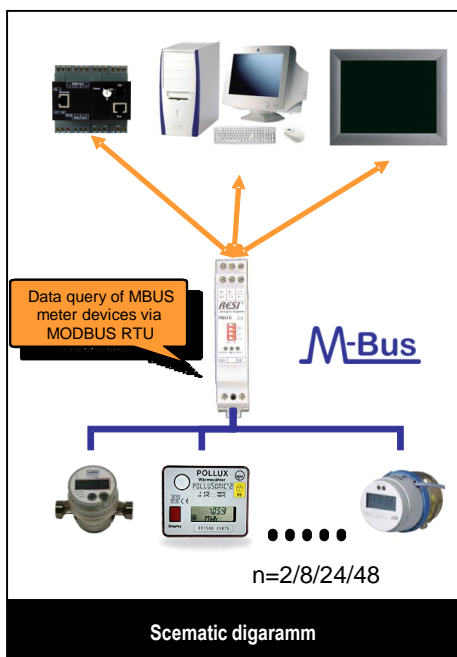
300bps to 38400 bps, Modbus connection with RS232 (9600 bps to 57600 bps), Mbus and Modbus are galvanically isolated, configuration via PC software, mountable on 35mm EN50022 DIN rail, weight 60g, dimensions 17.5x58x90mm, power supply 24 VDC, power consumption <2.5W, Free software download from www.RESI.cc

RESI-MBUS3-MODBUS

Consisting of a serial MeterBus Converter, connection to host via RS232 or RS485 with up to 48 meter (=unit loads) and 600 variables, communication speed from 300bps to 38400 bps, Modbus connection with RS232 (9600 bps to 57600 bps), Mbus and Modbus are galvanically isolated, configuration via PC software, mountable on 35mm EN50022 DIN rail, weight 60g, dimensions 17.5x58x90mm, power supply 24 VDC, power consumption <3.5W, Free software download from www.RESI.cc

RESI-MBUS-CONFIGURATOR

Consisting of a CD-ROM with configuration software to configure our MBUS products. Free software download under www.RESI.cc



DIP Switch

BR=Baud rate

DIP1	DIP2	Baud rate
OFF	OFF	9600Bd
ON	OFF	19200Bd
OFF	ON	38400Bd
ON	ON	57600Bd

HINT: The correct parity (NONE; EVEN;ODD) is selected with the software tool, not with DIP switches.

IF=Interface

OFF	RS232
ON	RS485

FD=Function definition

OFF	The unit ID from the FLASH memory is used
ON	The unit ID 255 is used

DIP switches

AT A GLANCE

- Connects a host with MODBUS/RTU master interface to meters with MBUS interface
- Host communication: via RS232 or RS485 with MODBUS/RTU Slave protocol
- Host baud rates: 9600, 19200, 38400 or 57600Bd, no or even parity, 8 Databits, 1 Stopbit
- automatic cyclic polling of connected MBUS meters
- MBUS and MODBUS interface is galvanic isolated
- Configuration of meters with free PC software MODBUS configurator
- data conversion and storage of the actual meter values in holding and input registers
- large library of meters for easy configuration
- Power supply: 24V=
- Mountable onto a EN50022 DIN rail