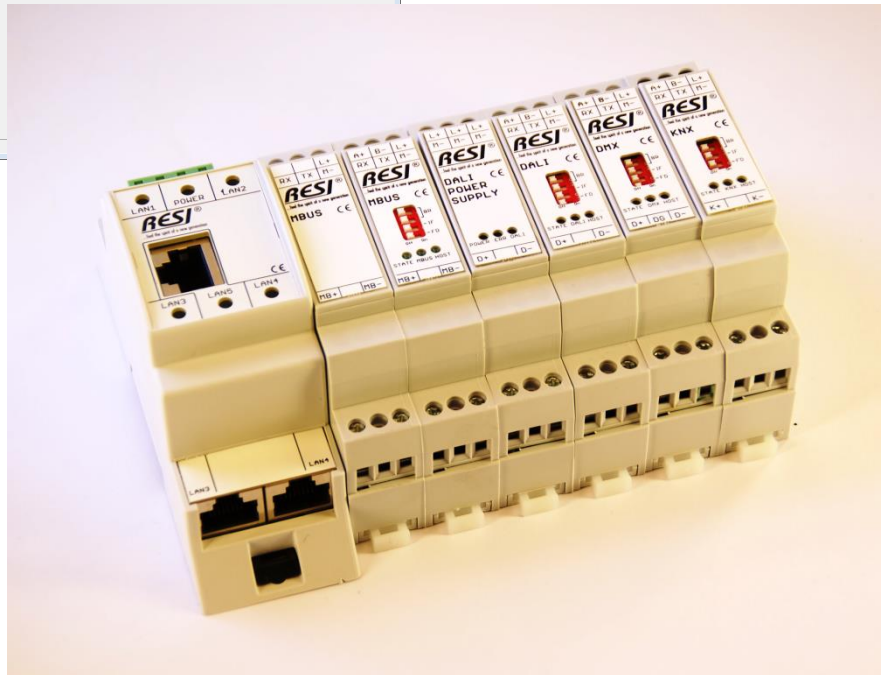
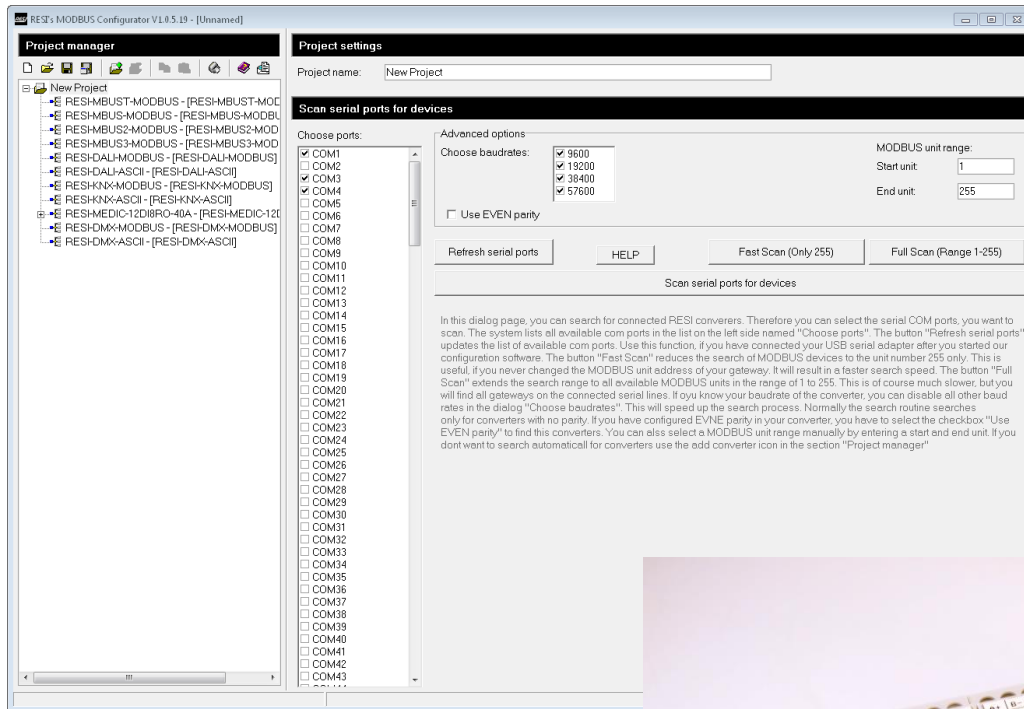


# ModbusConfigurator

## News about the software tool for our converter



### MODBUSConfigurator:

- NEU** Support for our modules with MODBUS or ASCII protocol
- NEU** Configuration of our MBUS, DALI, DMX, KNX, ENOCEAN, IO modules
- NEU** Load and save of configuration projects
- NEU** Generation of an automatic configuration report for your documentation
- NEU** Automatic search for connected modules via serial interfaces
- NEU** Extensive online help for each function of the tool in the internet

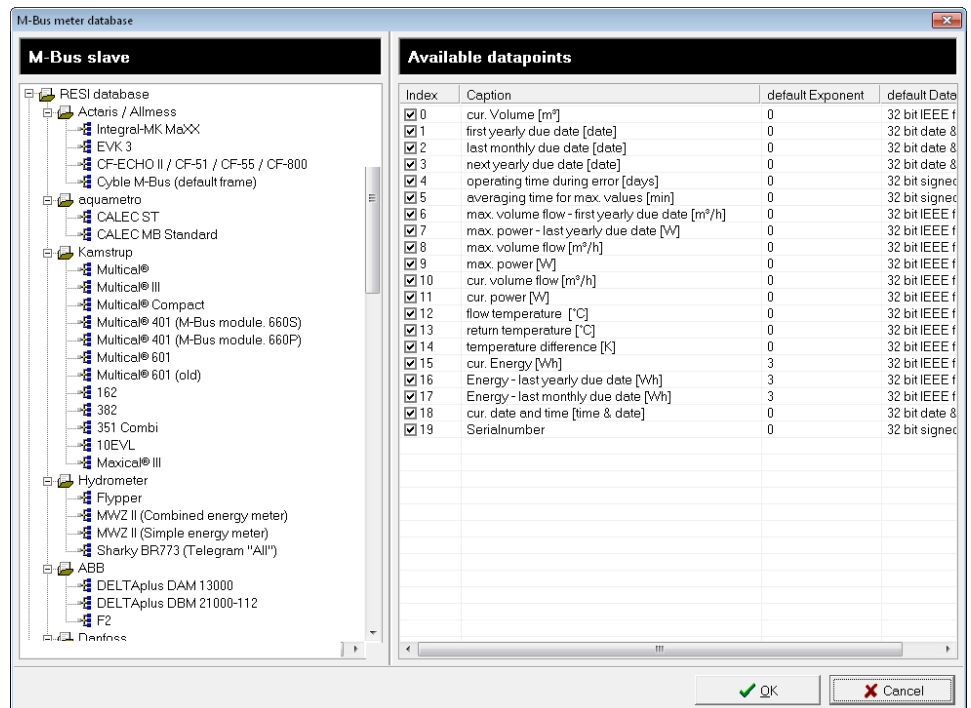
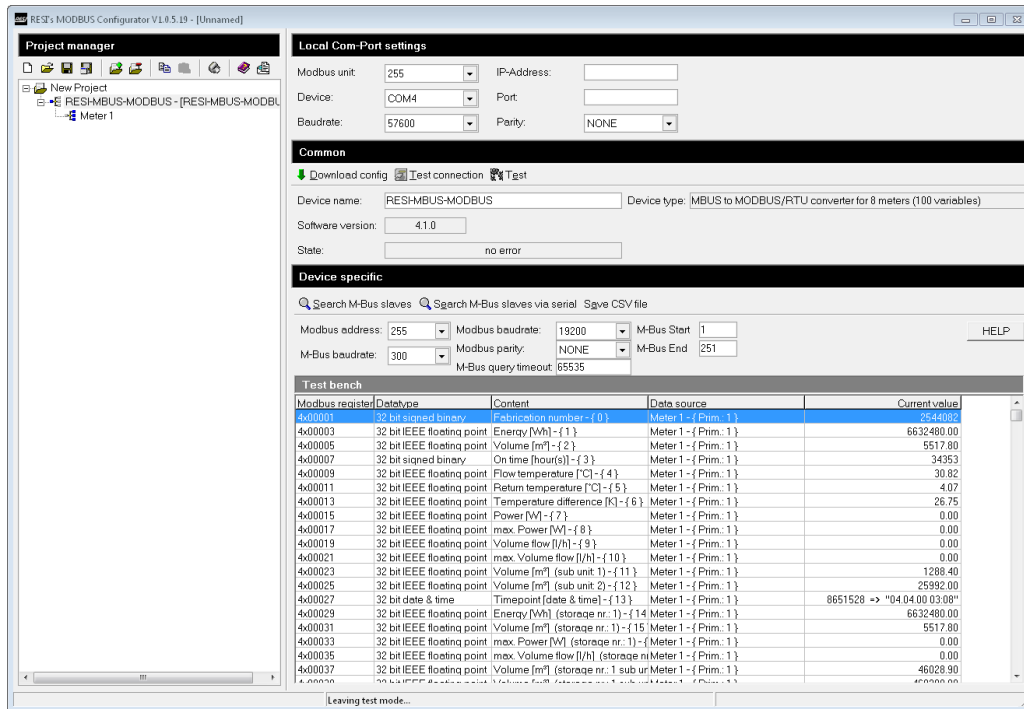
### FREE CONFIGURATION SOFTWARE

Our free software tool MODBUS-CONFIGURATOR can be downloaded from our homepage [www.RESI.cc](http://www.RESI.cc) for free. If you already have installed our tool on your PC, an update will start automatically from the internet.

RESI Informatik & Automation GmbH  
Altenmarkt 29, A-78551 Wies, AUSTRIA  
[www.RESI.cc](http://www.RESI.cc), [help@RESI.cc](mailto:help@RESI.cc)  
Phone: +43-316-262062-0  
Fax: +43-316-262062-66

# ModbusConfigurator

## News about the software tool for our converter



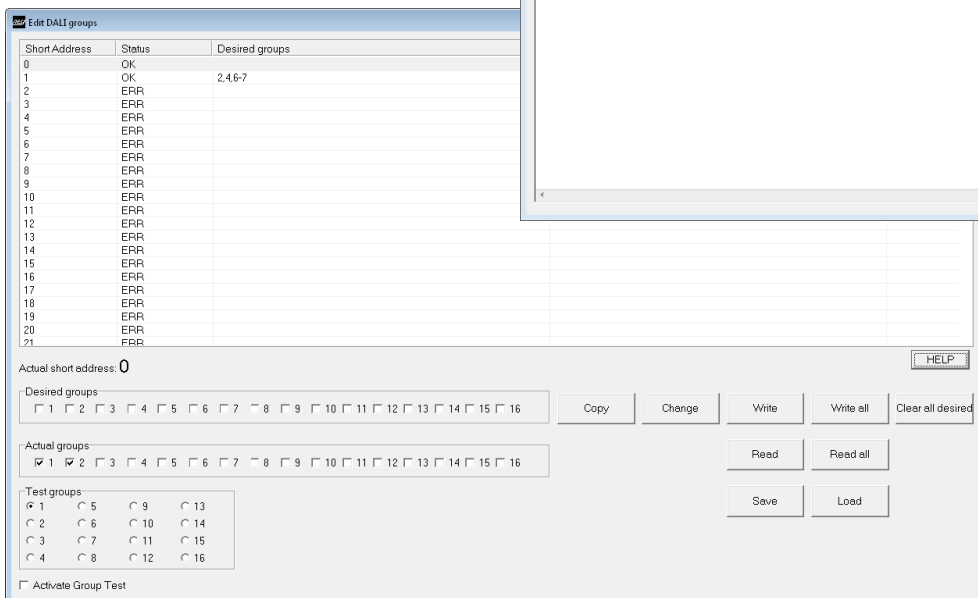
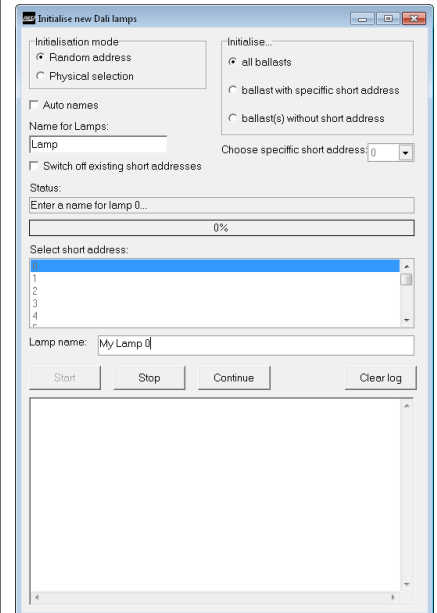
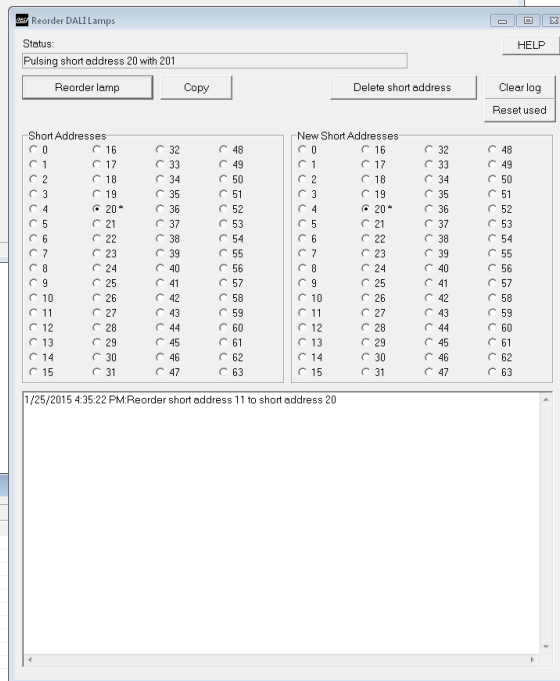
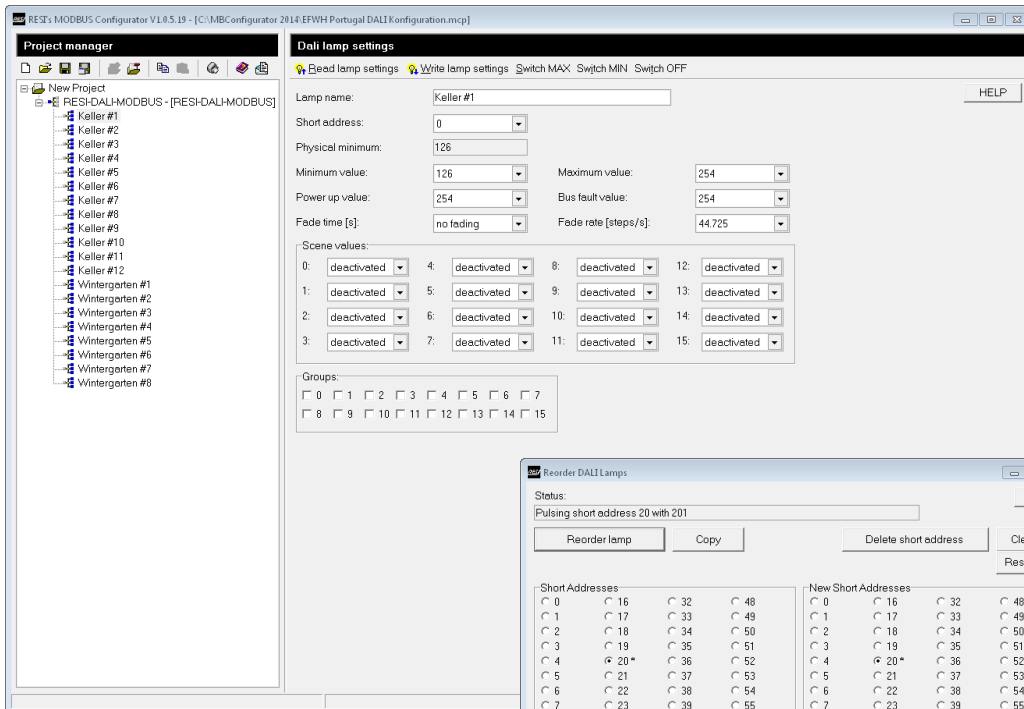
### MBUS:

- Supports the new converter types for 2, 8, 24 and 48 meters
- Automatic search for meters with the primary addressing mode (0..251)
- Automatic search for meters with the secondary addressing mode (serial number)
- Supportive online help for all MBUS functions of the software in the internet
- Extensive documentation how to map values between MBUS and MODBUS
- Huge library with preconfigured meters from the market
- Support for meters with special low power features like Sensonic sleep mode

RESI Informatik & Automation GmbH  
Altenmarkt 29, A-78551 Wies, AUSTRIA  
[www.RESI.cc](http://www.RESI.cc), [help@RESI.cc](mailto:help@RESI.cc)  
Phone: +43-316-262062-0  
Fax: +43-316-262062-66

# ModbusConfigurator

## News about the software tool for our converter



### DALI:

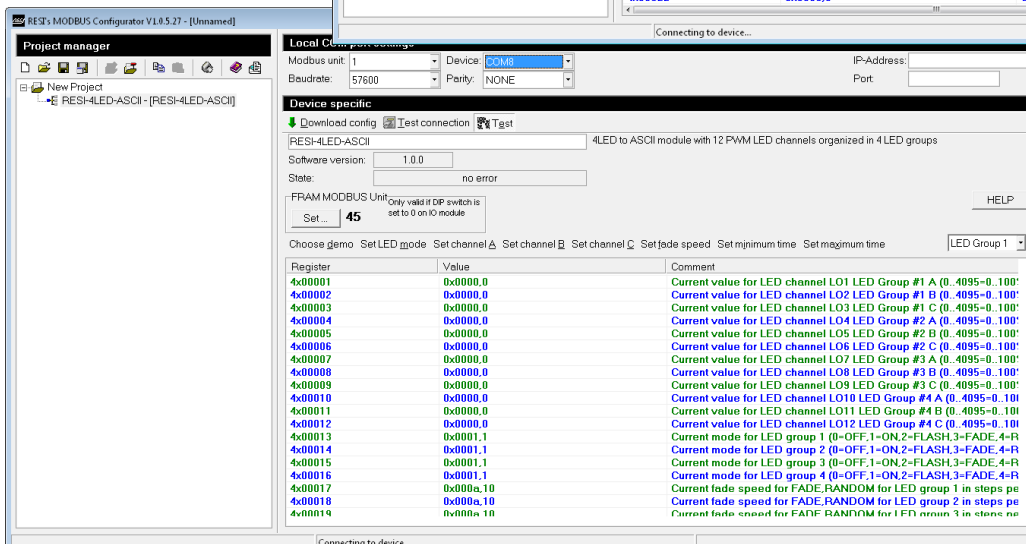
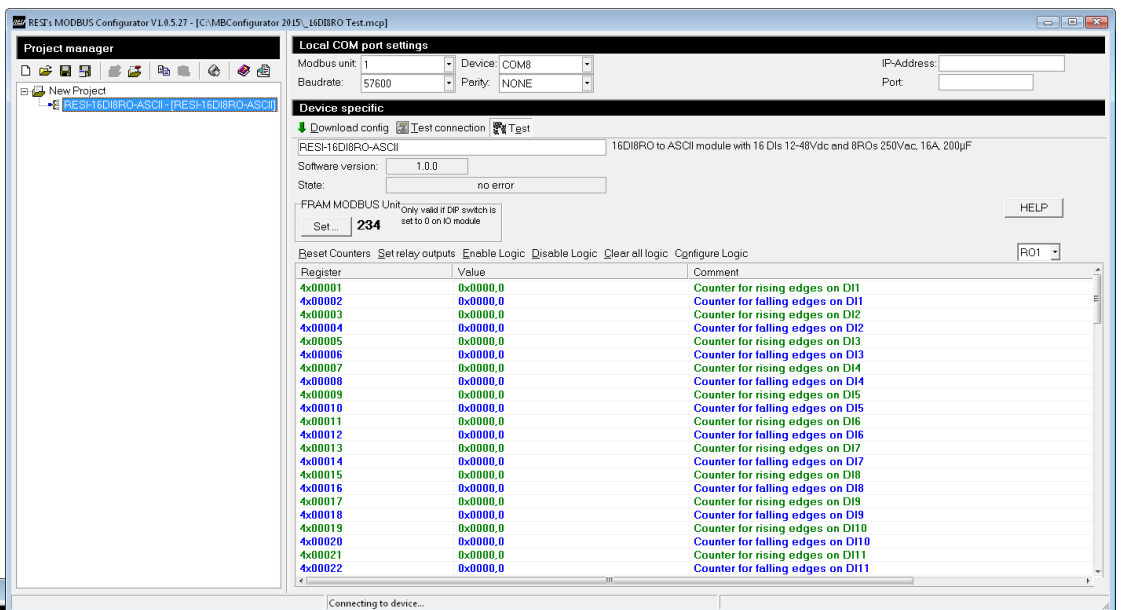
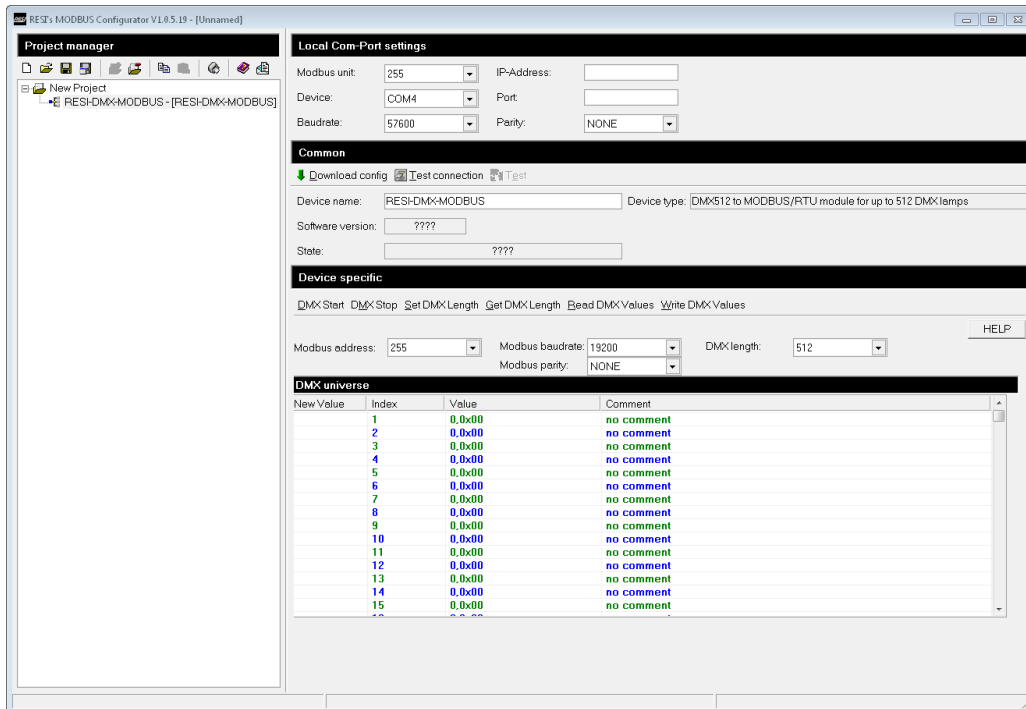


- Supports both converter types RESI-DALI-MODBUS and RESI-DALI-ASCII
- Automatic search for new lamps and automatic assignment of DALI short addresses
- Complete configuration of a DALI lamp (fade rate, groups, scenes, etc.)
- Extensive functions to change and test DALI lamp short addresses very quickly
- Special functions to assign and test DALI groups to DALI lamps
- Complete set of DALI instructions to check and test a DALI installation
- Supportive online help for all DALI functions of the software in the internet

RESI Informatik & Automation GmbH  
Altenmarkt 29, A-78551 Wies, AUSTRIA  
[www.RESI.cc](http://www.RESI.cc), [help@RESI.cc](mailto:help@RESI.cc)  
Phone: +43-316-262062-0  
Fax: +43-316-262062-66

# ModbusConfigurator

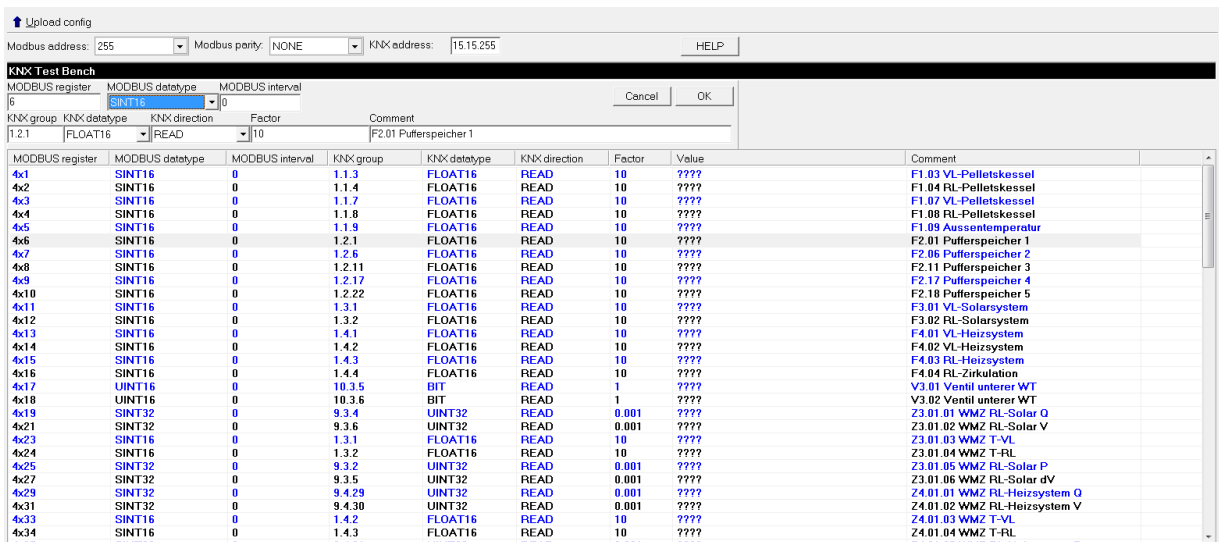
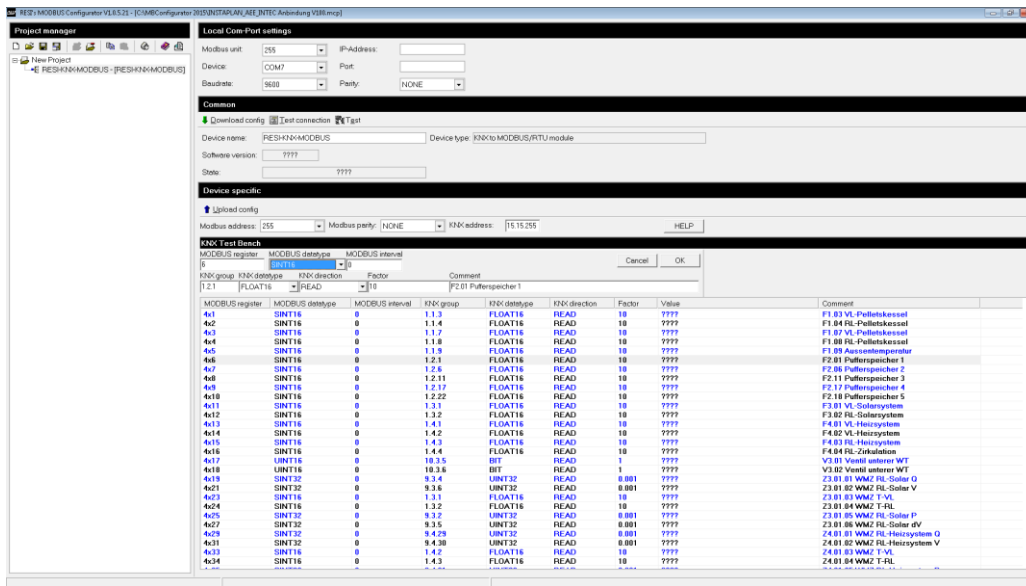
## News about the software tool for our converter



RESI Informatik & Automation GmbH  
Altenmarkt 29, A-78551 Wies, AUSTRIA  
[www.RESI.cc](http://www.RESI.cc), [help@RESI.cc](mailto:help@RESI.cc)  
Phone: +43-316-262062-0  
Fax: +43-316-262062-66

# ModbusConfigurator

## News about the software tool for our converter



KNX:

- NEU Supports the new KNX converters RESI-KNX-MODBUS and RESI-KNX-ASCII
- NEU Extensive conversion between KNX data types and MODBUS data types
- NEU Rich documentation how the mapping works between MODBUS and KNX
- NEU Supports the online testing of the KNX mapping to holding register

RESI Informatik & Automation GmbH  
Altenmarkt 29, A-78551 Wies, AUSTRIA  
[www.RESI.cc](http://www.RESI.cc), [help@RESI.cc](mailto:help@RESI.cc)  
Phone: +43-316-262062-0  
Fax: +43-316-262062-66



[www.RESI.cc](http://www.RESI.cc)