



CC-Link ComProbe[®]

CLPA certified CC-Link Network Monitor with NetDecoder™ Software Analyzer

Features

- CLPA Certified for Conformance Testing & Network troubleshooting
- Supports CC-Link version 2 and 1.1
- NetDecoder software supports both CC-Link and CC-Link IE
- Full detailed decoding of CC-Link protocols
- Graphical dashboard for network health monitoring

Benefits

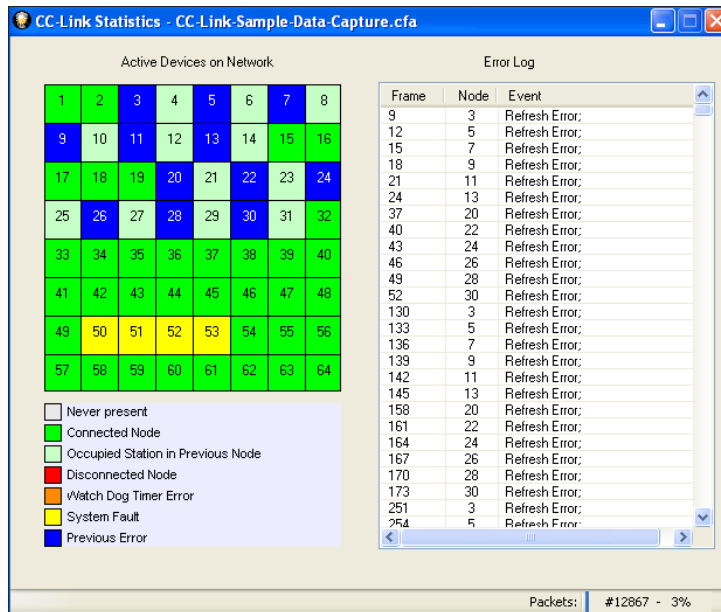
- Use the same tool that CLPA uses for conformance testing
- Rapidly develop products and reduce time-to-market
- Perform fast and efficient network installations
- Increase uptime by finding & fixing network problems quickly

System Requirements

- Intel Core Duo 1.2 GHz or higher
- Windows XP SP3 (32-bit) or Windows 7 (32-bit or 64-bit)
- RAM: 1 GB minimum, 2 GB recommended
- One USB 2.0 Port

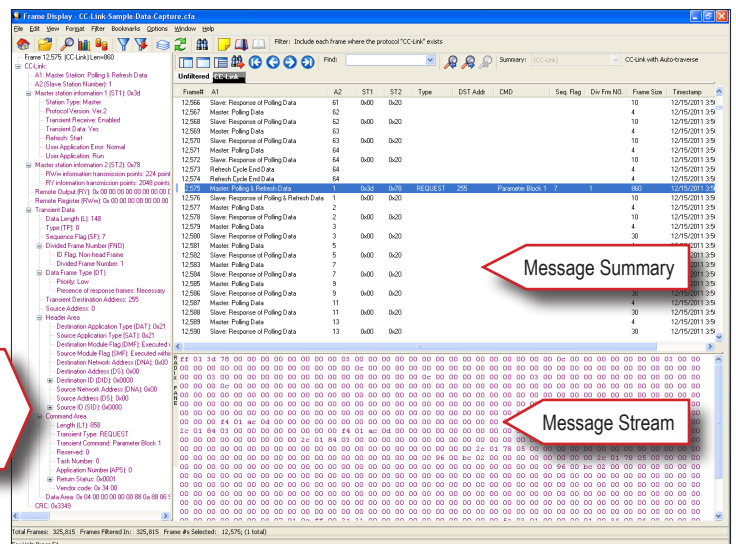
Frontline's CC-Link ComProbe is a CLPA certified CC-Link network monitor. The CC-Link ComProbe together with the NetDecoder software is a complete solution for testing and trouble-shooting CC-Link and CC-Link IE products and networks.

CC-Link ComProbe is portable and user-friendly. It connects to the analysis PC via a USB port. The software provides full detailed decoding of all CC-Link and CC-Link IE frames. The software includes the CC-Link Dashboard, which provides a clear, graphical overview of network health that makes it easy to debug network problems. The Dashboard is designed to be a continuous monitoring feature that can highlight network problems in their nascent stage. Early detection and intervention will prevent small problems from escalating into huge network downtimes.



The CC-Link ComProbe and the NetDecoder software are essential for everyone from hardware/software engineers developing a new CC-Link product to field engineers trying to fix network problems.

CC-Link Decoding: NetDecoder provides detailed decoding of all CC-Link data.



See actual command and reply data.



sales@fte.com
800.359.8570 US & Canada
+1.434.984.4500
Fax: 434.984.4505

© Copyright 2012. Frontline Test Equipment, Inc. All rights reserved. NetDecoder, FrameDecoder and the Frontline logo are trademarks, Debug Communications Faster is a service mark, and Frontline is a registered trademark of Frontline Test Equipment, Inc.