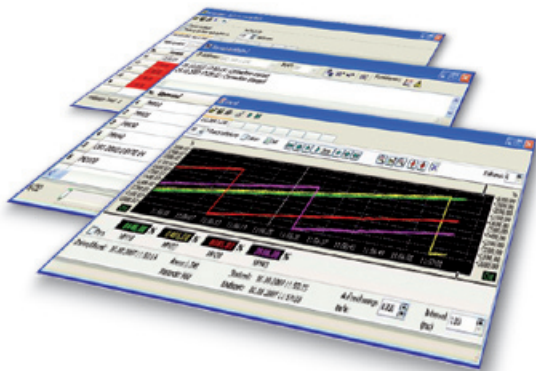
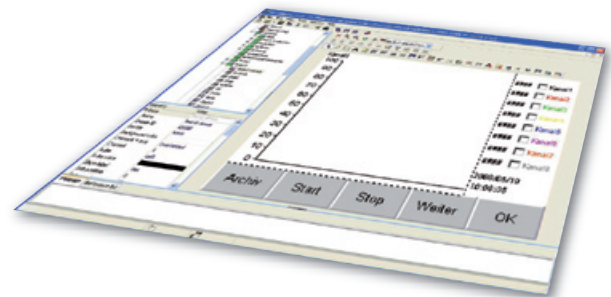


Data Agent / PG Agent / QUICKMENU for S7



S7 Tools developed with Data Agent



QUICKMENU 5

Communication driver and program access for S7-300 / S7-400 control systems

Data Agent

Data Agent is an attractive solution for PC programmers who do not want to concern themselves with complicated protocol details. With Data Agent, direct access to all S7 operands from diverse programming environments can be achieved efficiently. What makes it appealing is that the communication is based on RFC1006 and noticeably faster than for example via an OPC server. The programming interface consists of a 32-bit DLL. The DLL functions can be applied in the relevant development environment/programming language.

Data Agent utilisation areas

- For the creation of visualisation clients based on standard programming environments
- For the development of central data capture systems (SCADA)
- For service centres with worldwide remote access
- For the central or worldwide monitoring of installations and machine conditions

Data Agent technical data

- Executable under: WINDOWS® NT4/2000/XP/VISTA
- Interfaces: Ethernet / Serial
- Command mode: UPLOAD, DOWNLOAD, START, STOP, CLEAR
- Data formats: S7-300 WDL Format Binary Modules
- Protocol type: RFC1006 (Ethernet) MPI-P2P

PG Agent

The PG Agent program is a standalone command line program and serves to transfer PLC programs between the PC and the control system. In addition, commands can be transmitted to an S7 control system (Start/Stop/General Reset) PG Agent can be accessed from the command line via batch processes or directly from WIN32 programs.

The transfer can take place via a serial COM port or via TCP/IP. With that the PG Agent will be a very important tool for S7 service staff.

PG Agent utilisation areas

- Importing of programs without programming device (e.g. customer on site)
- within batch processes for automatic refreshing of S7 control systems
- for remote transfer of programstands without the PG Agent technical data programming device

PG Agent technical data

- Executable under: WINDOWS® NT4/2000/XP/VISTA
- Programming environment: MS VisualBasic, VisualC++, Borland C++, Borland Builder, Borland-Delphi, JAVA
- Command partners: Berthel-PLCs, SIMATIC-PLCs and compatible
- Protocol type: RFC1006 (Ethernet)
- Function: START, CONNECT, CLOSE, FETCH, WRITE, CONVERT

QUICKMENU 5 “the S7 visualisation“

You can expect a modern, ergonomic visualisation tool, optimally attuned to the selected target device. The configuring philosophy aligns itself with the most successful commercial graphic development environments. Without causing an overload, maximum functionality and operating comfort is provided. You will quickly recognise the coherencies in the

typical examples. Designing the visualisation function becomes a pleasure, intuitively operable and self-explanatory.

Try it out yourself, also without target device with the integrated simulator. A full version is available on the internet free of charge.

Target devices

- Panels and Panel PLCs from Berthel
- SIMATIC S7 control systems and compatible (from QIII / 2008)

Areas of application

- General visualisation tool for all industry sectors
- Data archiving system with simultaneous archive display during recording
- Message and malfunction message system
- Viewer for archive data (trend and alerts)

Technical data

• Executable under:	WINDOWS® 2000 / XP / VISTA
• Character set:	UNICODE-16
• Languages:	multilingual, no limitations
• Resolution:	depends on equipment, freely adjustable for PCs
• Variable format:	S7-300 compatible
• Number of variables:	no limitation
• Dynamic texts:	no limitation
• Malfunction message system:	integrated
• Alarm messages:	100 (battery-backed)
• Incident messages:	100
• Alarm and message archive / message archive viewer:	up to 4GB on Berthel PLC Panel, with PC visualisation unlimited on the hard drive
• Trending system:	4 trends each with 8 channels in different formats
• Trend archiving/ trend archive viewer:	up to 4GB on Berthel PLC Panel, with PC visualisation unlimited on the hard drive
• Formula management:	256 formulas, 1024 records, 256 variables / formula
• Password management:	10 password levels
• Bar graph / progress indicator:	integrated
• Radio buttons, check boxes:	integrated
• Buttons, images and image lists:	integrated
• Image formats:	integrated vector graphics and bitmaps (wmf, jpeg, bmp...)
• Project data produced:	DBs in S7-300 compatible WDL format
• Project simulation:	integrated
• Languages, text import / export:	integrated
• Import of S7 symbol files:	integrated
• Online functions:	upload / general reset (serial or via Ethernet)
• Online help:	German / English
• User interface, language:	German / English
• SCADA capability:	distributed data points via several PLCs in preparation

Special features

- STEP 7® compatible
- No licensing costs connected to Berthel control systems and panels
- Scalable from mono LCD to full HD format
- Very short training period
- Produces extremely compact STEP 7® compatible project data (Example: PC70: median project size 256KB in 4 data modules binary)
- Can be combined with STEP 7® projects and transferred with the STEP 7® project
- Can be applied in connection with every S7 control system as a visualisation tool
- Can be applied as Panel/Panel PLC visualisation tool and fully-fledged MS Windows® visualisation tool
- Remote visualisation with Visual Agent from Berthel possible via router / Internet
- Extremely low use of system resources
- Very short development cycles in change-translate-load (or simulate) testing
- Minimal installation effort / outlay
- Industrial vector graphics library included as DEMO
- 4000 bmp graphics integrated into library
- Integrated simulator

Special requests?

Berthel already makes economic solutions specified by client for their special requirements in case of small ranges possible. Send your request for a concept free of charge!