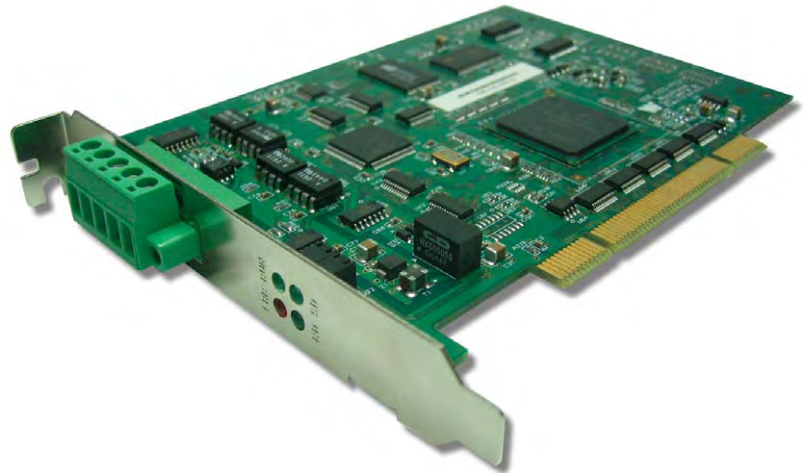


# CC-Link Slave for Universal PCI Bus

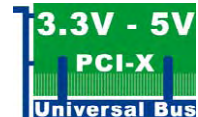
SST™ PCI Bus CC-Link Interface Card

## Features

- High Performance 4th generation Coldfire Processor
- Compliant to CC-Link version 1.10
- Compliant to Universal PCI version 2.2
- Supports all CC-Link standard baud rates: 156K, 625K, 2.5M, 5M, 10M
- Software configurable station number, occupied stations and baud rate
- 256KBytes Ram and 256KBytes Flash
- 32KBytes Shared Ram
- User settable host watchdog for higher reliability



CC-Link



## OS and Drivers Supported

- VxWorks 5.5
- Windows XP
- Hardware Reference Guide
- Driver / API Reference Guide
- Demo / Test software and source code available

## Overview

The BradCommunications™ SST™ Network Interface Card for CC-Link connects your PC to the CC-Link network and is used for the commissioning, troubleshooting and diagnostics of the fieldbus. The SST Network Interface Cards are characterized by their simple use and fast implementation; they are modular and scalable. Moreover, they are designed to be easily embedded into computerized systems.

The SST Network Interface Card for CC-Link benefits to machine builders and industrial PC manufacturers by significantly shortening the time to market for new systems. In addition it can be also found in a wide array of industrial applications including:

- Machine-Machine Control
- Operator Interface
- Human-Machine Interface
- PC Control
- Device Development

The SST Network Interface Card for CC-Link is CC-Link conformance tested and supports CC-Link Slave specifications version 1.10; including all the standard CC-Link baud rates, 1 ~ 64 station number and up to 4 occupied stations.

Member of CC-Link Partner Association

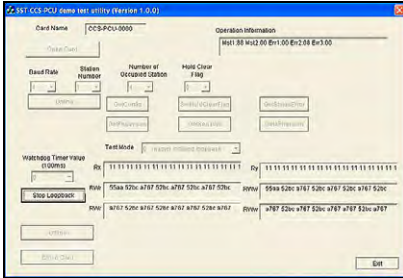


**BradCommunications™**  
from Woodhead Industries

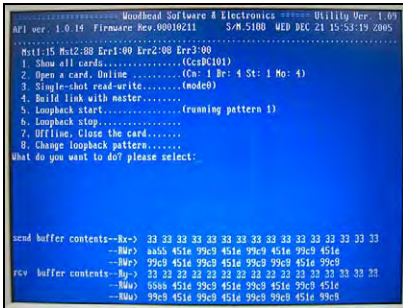
Distribución: **ER-SOFT, S.A.** Email: [er@er-soft.com](mailto:er@er-soft.com), Tel: +34 916 408 408

## Software Components

Drivers and APIs are available for VxWorks 5.5 and Windows. Demo test software and sample source codes are available to enable fast integration of CC-Link into your application.



- Windows Utility -



- VxWorks Utility -

## Other related products



- CC-Link network module for embedded applications -

# CC-Link Slave

## Hardware Specifications

### INTERFACE CARD SPECIFICATIONS

<b>Bus Interface</b>	32 bit, 33Mhz PCI version 2.2 Universal 3.3V / 5V interface
<b>Processor</b>	4 <sup>th</sup> Generation Coldfire
<b>Memory</b>	256KB RAM and 256KB Flash
<b>Interrupts</b>	Not supported
<b>Dimensions ( L X W )</b>	Standard half length
<b>Consumption</b>	2.4W
<b>Typical Current Drawn</b>	+5V, $\pm 5\%$ , 200mA.      +3.3V, $\pm 5\%$ , 400mA
<b>Voltage Requirements</b>	+5V and +3.3V from PCI bus
<b>Addressing: Memory</b>	256KB Window
<b>Addressing: IO</b>	256MB (taken but not used)
<b>Operating Temperature</b>	0° C (32° F) to +55° C (131° F)
<b>Storage Temperature</b>	-40° C (-40°g F) to +85° C (185° F)
<b>Humidity</b>	5% to 95% non-condensing
<b>RoHS Compliance</b>	Yes

### NETWORK SPECIFICATIONS

<b>Protocol</b>	CC-Link Slave, specifications v1.10
<b>Cable</b>	Shielded 3 Cores CC-Link compliant cable
<b>Connector</b>	CC-Link compliant 5 pin terminal block with screws
<b>External Power</b>	Nil
<b>Isolation</b>	500 Volts
<b>Display LEDs</b>	ERR, RUN, SD and RD
<b>Station Number</b>	1 to 64
<b>Occupied Stations</b>	1 to 4
<b>Data Rate</b>	156K, 625K, 2.5M, 5M and 10M baud
<b>CC-Link Conformance Tested</b>	Yes

## Ordering Information

Part Number	Description
<b>SST-CCS-PCU</b>	CC-Link Slave Card, Universal PCI Bus (3.3V/5V)

## Other related products

Part Number	Description
<b>SST-CCS-USB-KIT</b>	BradCommunications™ SST™ DC100CCS Development Kit (USB Adapter + DC100CCS + CD-Rom)
<b>DC100CCS-C-B10</b>	BradCommunications™ SST™ DC100CCS module, CC-Link Slave, 5 pins connector with screw, Bulk of 10
<b>DC100CCS-H-B10</b>	BradCommunications™ SST™ DC100CCS module, CC-Link Slave, HE13 connector, Bulk of 10

**BradCommunications™**  
from Woodhead Industries

Contact us: [www.woodhead.com](http://www.woodhead.com)      Reference Number: DW2007193      Date published: February 2007

**North America:** US +1 800 225 7724 – Canada +1 519 725 5136  
**Europe:** France +33 2 32 96 04 20 – Germany +49 7252 94 96 0 – Italy +39 010 59 30 77  
United Kingdom +44 1495 356300  
**Asia:** China +86 21 5835 9885 – Singapore +65 6261 6533 – Japan +81 3 5791 4621

Distribución: **ER-SOFT, S.A.** Email: [er@er-soft.com](mailto:er@er-soft.com), Tel: +34 916 408 408