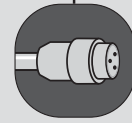


Single-Ended Cordsets

- Male and female Mini-Change® single-ended cordsets

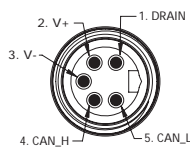
Trunk line single-ended Mini-Change cordsets can be used in a variety of locations on the DeviceNet network. These trunk line cordsets are designed to connect one node to the next, with the flying lead end being connected to either a DeviceNet open terminal strip or a field attachable Mini-Change style of connector to provide a double-ended quick-disconnect. Active nodes with open style of connections such as HMI, motion or motor controller products can be connected to the tee drop using these cordsets. Male connectors are supplied with externally threaded coupling nuts while female connectors are supplied with internally threaded coupling nuts. This allows you to daisy chain these trunk lines in a variety of configurations.



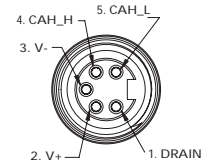
- Phosphor-Bronze contacts for greatest reliability
- Variety of cable types, cable exit, coupling nut and length options for maximum system flexibility.

Single-Ended Cordsets

FACE VIEWS



MALE



FEMALE

MALE	FIG	SINGLE-ENDED CORDSETS WITH THICK TRUNK CABLE	
STRAIGHT	1		DN01A-Mxxx
90°	2		DN09A-Mxxx
MATING RECEPTACLE W/ 1/2"-14NPT	5		DN5000-Mxxx
FEMALE	FIG	SINGLE-ENDED CORDSETS WITH THICK TRUNK CABLE	
STRAIGHT	3		DN10A-Mxxx
90°	4		DN90A-Mxxx
MATING RECEPTACLE* W/ 1/2"-14NPT	5		DN5100-Mxxx

CATALOG OPTIONS

* See pages 28-29 for additional mating receptacles

Use the following chart to modify your part's specifications

DN01A-Mxxx

CABLE OPTIONS

DEVICENET THIN	ADD D
DEVICENET MID	ADD B
DEVICENET THICK; FLEX RATED	ADD F
DEVICENET THICK; TRAY RATED	ADD E

COUPLING NUT

EPOXY COATED ZINC	A
STAINLESS STEEL	SS
NICKEL-BRASS	NB

STANDARD LENGTH*

2 METER	.020
4 METER	.040
5 METER	.050
6 METER	.060
10 METER	.100

* Please call for availability of non-standard lengths

CONNECTOR DIMENSIONS

Male Straight

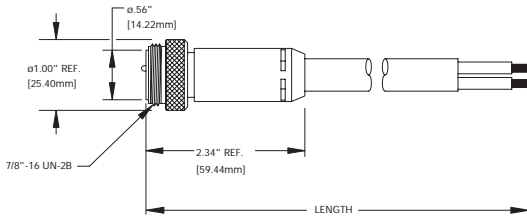


FIG 1

Male 90°

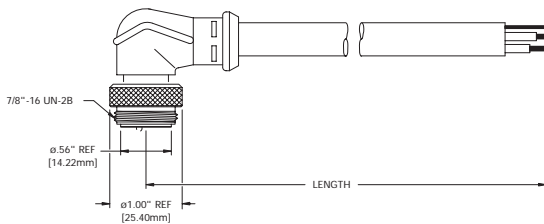


FIG 2

Female Straight

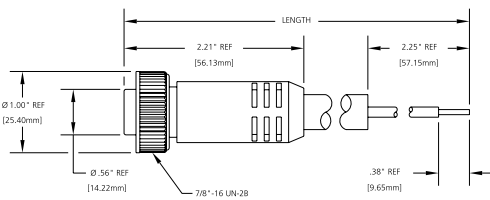


FIG 3

Female 90°

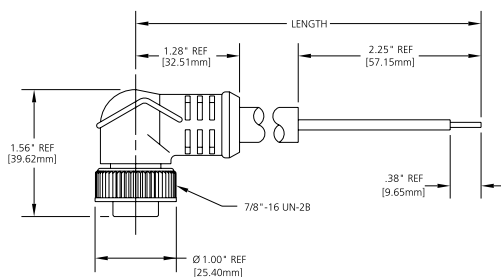


FIG 4

MECHANICAL

CONNECTOR FACE: PVC-UL STD 94-V
 MOLDED BODY: PVC-UL STD 94-V
 COUPLING NUT: ZINC DIECAST W/ BLACK EPOXY COAT
 OPTIONAL STAINLESS STEEL OR NICKEL-PLATED BRASS

CABLE: THICK – SEE PAGE 18 FOR SPECIFICATIONS
 MID – SEE PAGE 21 FOR SPECIFICATIONS
 THICK-FLEX – SEE PAGE 19 FOR SPECIFICATIONS

OUTSIDE DIAMETER: THICK – 0.48" (12.1 mm)
 MID – 0.340" (8.6 mm)
 THICK-FLEX – 0.48" (12.2 mm)

ELECTRICAL

VOLTAGE RATING: 300V AC / DC
 AMPERAGE: BASED ON CABLE TYPE
 CONTACTS: PHOSPHOR-BRONZE BASE MATERIAL
 CONTACT PLATING: GOLD OVER NICKEL PER ODVA SPECS

ENVIRONMENTAL

PROTECTION: IP68, NEMA 6P
 AMBIENT OPERATING TEMP: -4° TO 176° F (-20° TO 80° C)

CERTIFICATIONS

UL: UL LISTED, FILE NO. E152210
 CSA: CSA CERTIFIED, FILE NO. LR6837

RECEPTACLE DIMENSIONS

Female Receptacle

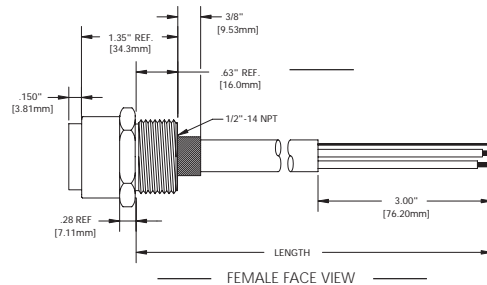


FIG 5

Male Receptacle

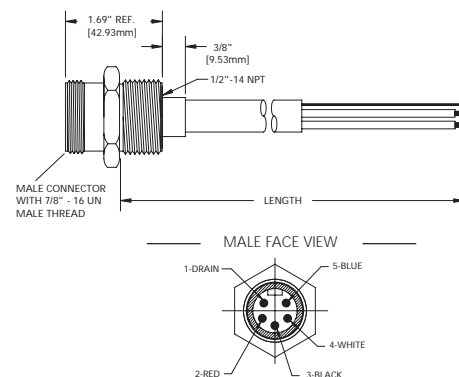


FIG 6