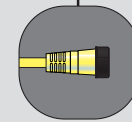


Auxiliary Power Cordsets

- Mini-Change® cordsets
- Single-ended female and male; straight and 90°
- Double-ended female to male; straight and 90°



- Rugged IP68 rated connectors bring power to active I/O modules reliably
- Variety of cable type, connector configuration and cable length options available for maximum flexibility



Both single-ended and double-ended 4P Mini-Change cordsets are used to connect auxiliary power to a variety of devices including active I/O modules and machine stop tees. Female connections bring power safely to the blocks by not having any exposed "live" pins. For powering active blocks the molded Mini-Change end of the cable connects to the block while the flying lead end is connected to the power supply's output. Double-ended cordsets are used to provide a quick disconnect on the power source as well as on the device powered.

4P Mini-Change Auxiliary Power Cordsets

FACE VIEWS	SAE-J-1738A		CENELEC EN 50 044	
	FEMALE	MALE	FEMALE	MALE

FEMALE	FIG	SINGLE-ENDED CORDSETS	
STRAIGHT	1	104000A01Mxxx	104000A38Mxxx
90°	2	104001A01Mxxx	104001A38Mxxx
MALE	FIG	SINGLE-ENDED CORDSETS	
STRAIGHT	3	104006A01Mxxx	104006A38Mxxx
90°	4	104007A01Mxxx	104007A38Mxxx
FEMALE/MALE	FIG	DOUBLE-ENDED CORDSETS	
STRAIGHT/STRAIGHT	1 AND 3	114030A01Mxxx	114030A38Mxxx
90°/STRAIGHT	2 AND 3	114031A01Mxxx	114031A38Mxxx
STRAIGHT/90°	1 AND 4	114032A01Mxxx	114032A38Mxxx
90°/90°	2 AND 4	114033A01Mxxx	114033A38Mxxx

	FIG	RECEPTACLE WITH #16 AWG PVC LEADS	
MALE	5	1R4006A20xxxx	1R4006A39xxxx
FEMALE		1R4000A20xxxx	1R4000A39xxxx
LENGTHS		xxxx: A120 - 1 FT., F030 - 3 FT., F060 - 6 FT.	xxxx: M005 - 0.5M, M010 - 1M, M020 - 2M
	FIG	BULK HEAD FEED-THRU	
MALE/FEMALE	4	1R4030	
FIELD-ATTACHABLE CONNECTORS			
FEMALE STRAIGHT		1A4000-34	
MALE STRAIGHT		1A4006-34	

* pin out per SAEH1738-2
See page 146 for CENELEC Bus rotation

Use the following charts to modify your cordset part's specification

1x4xxxxxxMxxx

TYPE	CONNECTOR CONFIG.	CABLE OPTIONS	STANDARD LENGTH*	COUPLING NUT OPTIONS
SINGLE-ENDED . . . 0	Single-Ended	UL ST00W PVC CABLE, NEC COLOR CODE, SAE	Single-Ended	STAINLESS STEEL ADD 1
DOUBLE-ENDED . . . 1	FEMALE, STRAIGHT . . . 000	J-1738A PINOUT A01	2 METER 020	NICKEL-BRASS ADD 3
	FEMALE, 90° 001	UL ST00W PVC CABLE, IEC COLOR CODE, CENELEC EN 50 044	4 METER 040	
	MALE, STRAIGHT 006	PINOUT A38	5 METER 050	
	MALE, 90° 007	CABLE, IEC COLOR CODE, CENELEC EN 50 044 K12	6 METER 060	
	Double-Ended (Female/Male)		10 METER 100	
	STRAIGHT/STRAIGHT . . . 030		Double-Ended	
	90°/STRAIGHT 031		0.5 METER 005	
	STRAIGHT/90° 032		1 METER 010	
	90°/90° 033		2 METER 020	
			3 METER 030	
			4 METER 040	
			5 METER 050	

* Please call for availability of non-standard lengths

CONNECTOR DIMENSIONS

Female Straight

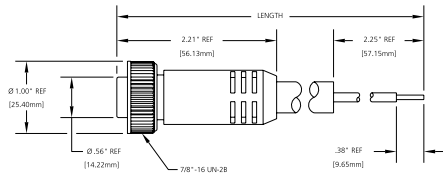


FIG 1

Female 90°

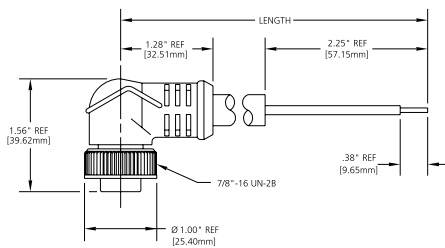


FIG 2

Male Straight

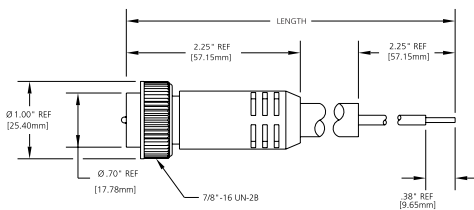


FIG 3

Male 90°

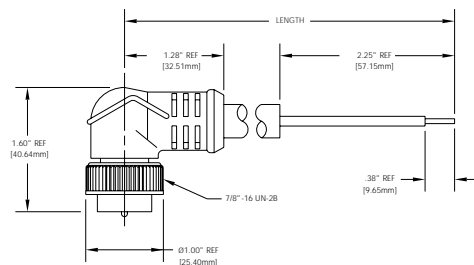


FIG 4

MECHANICAL

CONNECTOR FACE: PVC-UL STD 94-VO
 MOLDED BODY: PV-UL STD 94-VO
 COUPLING NUT: ZINC DIECAST W/ BLOCK EPOXY COAT,
 OPTIONAL STAINLESS STEEL TYPE 303 OR
 NICKEL-PLATED BRASS

CABLE:

YELLOW, #16 AWG, PVC JACKET,
 PVC CONDUCTOR INSULATION OVER 65X
 #34 COPPER STRANDING,
 UL STOOW CSA ST
 0.42" (10.77 mm)

CABLE DIAMETER:

ELECTRICAL

VOLTAGE RATING: 600V AC / DC
 AMPERAGE: 10A

ENVIRONMENTAL

PROTECTION: IP68, NEMA 6P
 AMBIENT OPERATING TEMP: -4° TO 221° F (-20° TO 105° C)

CERTIFICATIONS

UL: UL LISTED, FILE NO. E152210
 CSA: CSA CERTIFIED, FILE NO. LR6837

RECEPTACLE DIMENSIONS

Bulkhead Feed-Thru

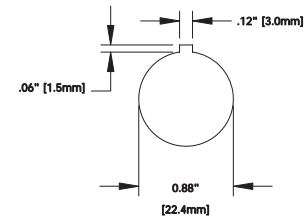
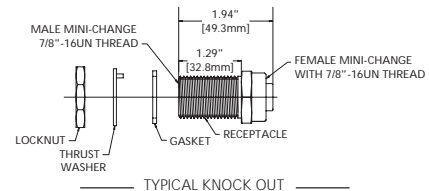
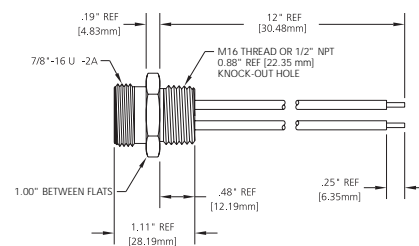


FIG 4

Male Receptacle



TYPICAL KNOCK OUT

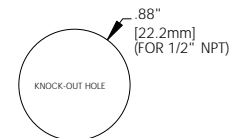


FIG 5