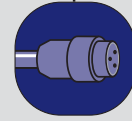


Data Line Tee

- Provides bus connection to Profibus nodes

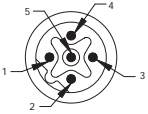
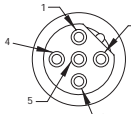
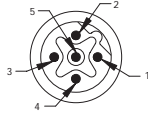
The Profibus Data Line Tee provides network connection to Profibus enabled valves and other single port Profibus enabled devices. The single port drop enables "hot swap" capability, which allows you to disconnect a device without bringing the network down. The product's shielded design significantly reduces EMI and RFI while the line balancing inductors reduce signal reflection in the network. Maximum drop length should be considered when using this product.

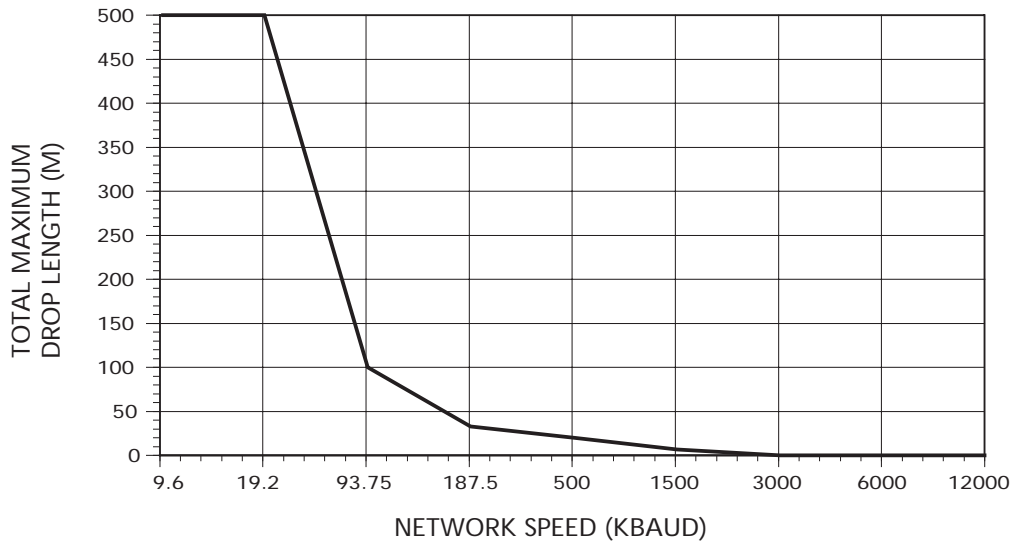


- Provides quick disconnection of bus line
- Shielded to reduce EMI/RFI
- Allows disconnection of node without shutting down the network



Data Line Tee

BUS IN MALE FACE VIEW		BUS OUT FEMALE FACE VIEW		DROP BUS MALE FACE VIEW	
COLOR CODE	1- NOT USED 2- GREEN(BUS-A)		3- NOT USED 4- RED(BUS-B)		5- DRAIN
FIGURE	SHIELDED DATA LINE TEE				
1 AND 2	PDTS01				
Recommended Use of Drop Lines					



MECHANICAL
 CONTACT FACE: 16/6
 MOUNTED ON: PVC
 COILS: NICKEL PLATED BRASS
 SHIELDING SLEEVES: NICKEL PLATED BRASS

ELECTRICAL
 VOLTAGE RATING: 30V AC/ 36V D/C
 CURRENT RATING: 4A

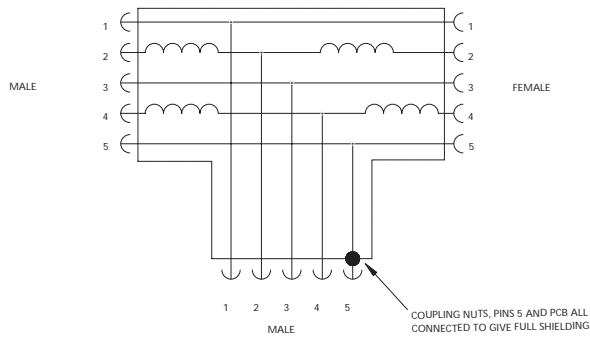
ENVIRONMENTAL
 PROTECTION: IP67 (I.E.C. 60529)
 OPERATING TEMP: 77° to 176°F (25° to 80°C)

GENERAL

COILS, PINS AND PCB ALL
 COATED TO PROVIDE FULL SHIELDING
 REVERSE OF PROFIBUS CIRCUITRY
 INCLUDES ISOLATING INDICATORS

SCHEMATIC

Shielded



DIMENSIONS

