

# Terminators



- Used to terminate end of data line
- Shielded head to reduce RFI/EMI
- Used with remote active I/O modules

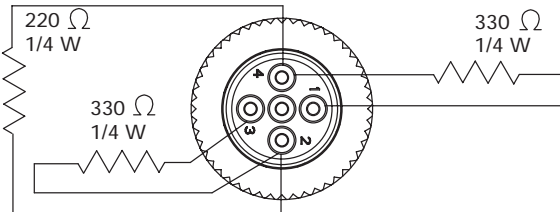
- Male Reverse Key Micro-Change®
- M12 thread

Termination circuitry is required at each end of a Profibus DP network segment. The circuitry provides protection against reflection on the data line. This product is ideal for use with the BradControl™ I/O modules.

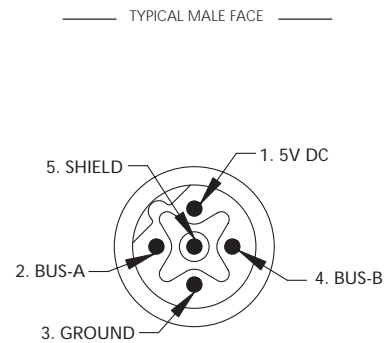


## Specification

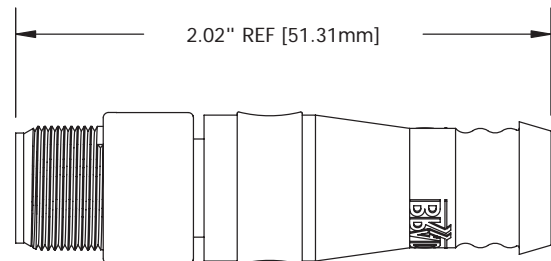
### SCHEMATIC



### DIMENSIONS



TYPICAL SIDE VIEW



- MECHANICAL**
- CONNECTOR FACE: NYLON 6/6
  - MOLDED BODY: PVC
  - O-RING: NITRILE NUMBER
  - COUPLING NUT: NICKEL-PLATED BRASS
- ELECTRICAL**
- VOLTAGE RATING: 250V AC/DC
  - AMPERAGE: 4A
- ENVIRONMENTAL**
- PROTECTION: IP68
  - AMBIENT OPERATING TEMP: -4° TO 221° F (-20° TO 105°C)

PART NUMBER	DESCRIPTION
B05S06	STRAIGHT SHIELDED MALE TERMINATOR