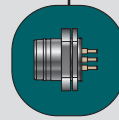




Receptacles

- 4-Pole Micro-Change® (M12) Receptacles
- Accepts both threaded and Ultra-Lock™ cordsets

A variety of receptacles allow the data line to enter an enclosure and make a connection to the inside of the panel and its components. Front-panel mount, often used for sensor applications, and back-panel mount, typically used for enclosures, are available in both male and female configurations. All receptacles feature the patented Ultra-Lock feature, and can mate to both standard and Ultra-Lock M12 cordsets.



- Mates with both threaded M12 and Ultra-Lock™ M12 cordsets
- Category 5e compliant
- IP67 rated, perfect for harsh industrial environments
- D-Coded to ensure proper alignment/mating
- Board locking feature for more secure mounting

Receptacles

FACE VIEW			FEMALE			
PINOUT/ COLOR CODE	1- YELLOW (TD+) 3- ORANGE (TD-)	2- WHITE (RD+) 4- BLUE (RD-)				
	FIG	PCB-MOUNT	FIG	WITH 0.5M FLYING LEAD	FIG	CABLE TO RJ45
BACK-PANEL MOUNT/M16	1	ERWD2U70	5	ERWAAU7000C050	6	ERWPAU7003M006
	2	ERWF2U70 ¹				
BACK-PANEL MOUNT/M16 TO RJ45 ADAPTER	STRAIGHT				9	ER1PADAPTER
	90°				9	ER1PADAPTER90
FRONT-PANEL MOUNT/PG9	3	ERWD2J30	7	ERWAAJ3000C050		
FRONT-PANEL MOUNT/M16	4	ERWD2U30	8	ERWAAU3000C050		

¹ Includes board locking feature

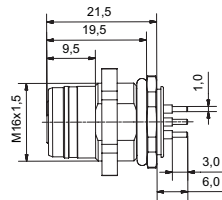
Specifications

MECHANICAL	
SHELL:	NICKEL-PLATED BRASS
INSERT:	PUR
CONDUCTORS:	BRASS GOLD PLATED/BRONZE SELECTIVE GOLD PLATED
O-RING:	FPM (ALSO CALLED VITON OR FKM)
ELECTRICAL	
VOLTAGE RATING:	215V
AMPERAGE RATING:	4A
TIA/EIA RATING:	CATEGORY 5E
ENVIRONMENTAL	
PROTECTION:	1P67, SUN/OIL RESISTANT

RECEPTACLE DIMENSIONS

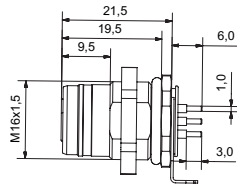
— BACK-PANEL MOUNT/M16 —

FIG 1



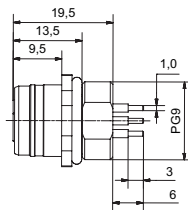
— BACK-PANEL MOUNT/M16 —

FIG 2



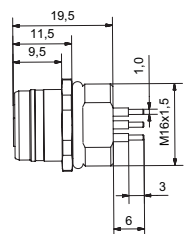
— FRONT-PANEL MOUNT/PG9 —

FIG 3



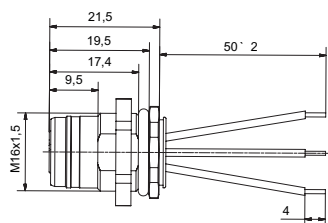
— FRONT-PANEL MOUNT/M16 —

FIG 4



— BACK-PANEL MOUNT/M16 WITH 50MM WIRE LEADS —

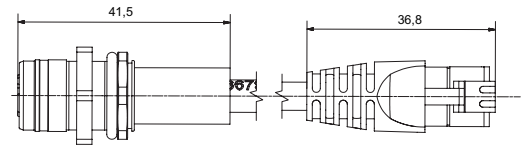
FIG 5



RECEPTACLE DIMENSIONS

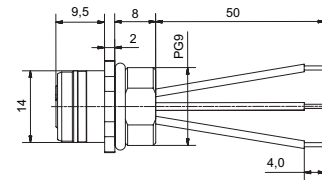
— BACK-PANEL MOUNT/M16 WITH 0.6M CABLE —

FIG 6



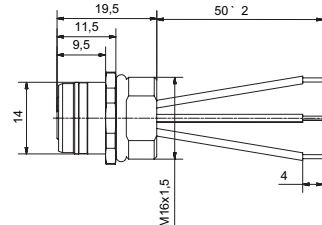
— FRONT-PANEL MOUNT/PG9 WITH 50MM WIRE LEADS —

FIG 7



— FRONT-PANEL MOUNT/M16 WITH 50MM WIRE LEADS —

FIG 8



— BACK-PANEL MOUNT/M16 TO RJ45 ADAPTER —

FIG 9

