

# **ControlNet DIAGNOSTIC AND CONFIGURATION TOOLS**

## **Overview**

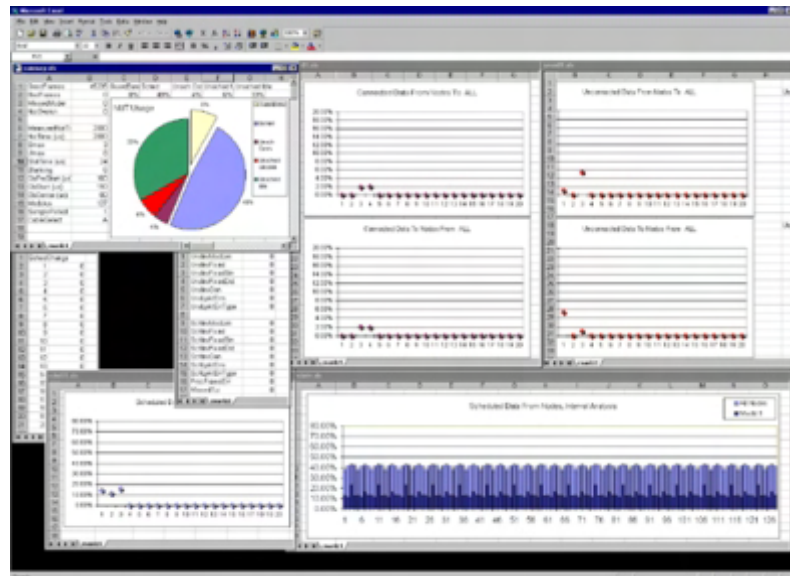
SST Diagnostic and Configuration Software Tools for ControlNet consist of the ControlNet Network Analyzer, Capture Tool and Configuration Tool. Windows 2000 and Windows NT V4.0 operating systems are supported. ControlNet diagnostic and configuration tools are compatible with SST ControlNet interface cards.

## **ControlNet Network Analyzer**

The SST ControlNet Network Analyzer is a diagnostic tool that allows you to capture and analyze traffic on your ControlNet network.

Features include providing information on:

- Network summary:
  - Percentage breakdown for scheduled, unscheduled and guardband usage
  - Displays network parameters and various error counters
- Scheduled messaging:
  - Scheduled bandwidth usage by interval, globally and for any specific node
  - Scheduled bandwidth usage breakdown by node
  - Error counters indicating when nodes miss their scheduled updates
- Unscheduled messaging:
  - Connected and unconnected bandwidth usage are shown independently, globally as well as node by node with minimum / maximum
  - Traffic can be measured specifically to/from any other node



*ControlNet Network Analyzer*

### **Available with SST ControlNet Cards\*:**

- ControlNet Capture Tool
- ControlNet Configuration Tool
- ControlNet Network Analyzer
- Microsoft Windows NT drivers/DLLs
- Rockwell Software RSLinx Support
- Example code and open memory map interface for custom driver development
- OPC Server
- 24/7 Global Technical Support



**Network Diagnostic and Configuration Software**

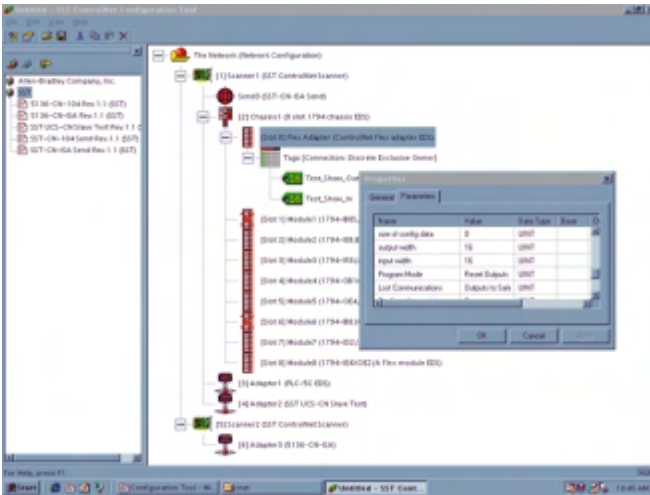
[www.mySST.com](http://www.mySST.com)

Distribución: ER-SOFT, S.A. Email: [er@er-soft.com](mailto:er@er-soft.com), Tel: +34 916 408 408



## ControlNet Configuration Tool

A configuration tool is required to configure ControlNet network parameters and SST ControlNet scanners. The SST ControlNet Configuration Tool uses ControlNet standard EDS files. You build the network configuration by dragging devices from the EDS library to the scanners in the configuration tree, then configure the devices by double clicking on them to display a configuration dialog. When you have configured the devices, the Configuration Tool then builds the network schedule. You can export the network configuration to BSS binary configuration files, or download the configuration over ControlNet. You can also build reference names for I/O data (tags) and export them for use in other programs.



*ControlNet Configuration Tool*

## ControlNet Capture Tool

The SST ControlNet Capture Tool allows you to capture and display ControlNet packets. This tool is generally used to analyze ControlNet message content and timing. All ControlNet messages are captured with microsecond resolution providing accurate measurement of node response time. You can use the option files provided or build your own to extract specific information from the raw captures. This is a passive tool where the network under study is not disturbed.

## Other Reference Materials

### Web Site

- [www.mySST.com/swtools/cncont.htm](http://www.mySST.com/swtools/cncont.htm)

## Related ControlNet Products

- Network Interface Cards connect various computer bus formats to industrial networks
- Network Gateways
- Data Servers include OPC and DDE Servers

## Affiliations

- Active member of ControlNet International

## Ordering Information

- Contact SST Sales Department for details

\* varies by bus format

**www.mySST.com**

**Also available from SST:**

**Gateways  
PLC Modules  
Data Servers  
Interface Cards  
Embedded Solutions  
I/O Simulation Software  
Diagnostic and Configuration Software**

**ECNDIAG April 2002**

**50 Northland Road  
Waterloo, Ontario  
Canada N2V 1N3  
Tel: 519-725-5136  
Fax: 519-725-1515  
Sales@mySST.com**

**43 rue Mazagran  
76320 Caudebec-lès-Elbeuf  
France  
Tel: +33-2-32-96-04-20  
Fax: +33-2-32-96-04-219  
info@applicom-int.com**

**Landmark Tower 43F  
Minatomirai 2-2-1, Nishi-ku  
Yokohama-city 220-8143 Japan  
Tel: +81-4-5224-3560  
Fax: +81-4-5224-3561  
sst@woodhead.co.jp**

**W Woodhead Connectivity**  
applicom • Brad Harrison • mPm • NetAlert • RJ-Loox • SST  
THE GLOBAL LEADER IN INDUSTRIAL COMMUNICATIONS AND CONNECTIVITY