



This network interface card allows to connect your applications to industrial networks through **Ethernet** messaging of the most popular manufacturer vendors (Siemens, Schneider, Allen-Bradley, Omron, Mitsubishi, GE-Fanuc, Altus, etc).

In addition, a Serial port manages Serial or Profibus protocols.

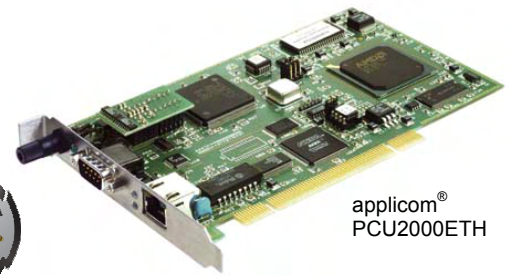
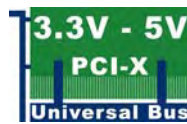
15 Nov. 04

## applicom<sup>®</sup> Ethernet PCU2000ETH

Best choice for SCADA/HMI applications

### Features

- All protocols included in the package
- Free Full technical support during 2 years of hardware warranty
- On-board processor eliminates data bottle necks, ensuring delivery of time critical information
- Certified with more 50 major SCADA/HMI packages
- 10/100 Fast Ethernet RJ-45 Port
- COMBO Offer =  
Ethernet + Profibus 1.5Mbps  
or  
Ethernet + Serial 38.4Kbps
- Able to run simultaneously all TCP/IP protocols in Client/Server modes
- Redundancy feature via OPC Server
- Win32 NDIS driver (using applicom<sup>®</sup> interface as a standard Ethernet card)
- Embedded Database (32 Kwords + 32 Kbits)



applicom<sup>®</sup> PCU2000ETH

### Overview

applicom<sup>®</sup> is a range of intelligent communication solutions, complete and ready to use covering more than 40 protocols among a wide choice of industrial networks and fieldbuses: Ethernet TCP/IP, Profibus, Modbus Plus, Data Highway Plus, WorldFIP and Serial Links. These solutions connect your PC-based applications (HMI, SCADA, MES, Custom applications) to industrial equipment (programmable controller, I/O modules, devices...).

Thanks to applicom<sup>®</sup> smart technology - built-in processor, each interface card is able to execute all management and the processing (polling, frame management, etc.) of communications protocols, resulting in extremely fast, efficient application performance.

The applicom<sup>®</sup> software package includes:

- Graphical configuration software.
- Test and network diagnostic tools.
- Data servers
  - ✓ OPC DA v1.0a, v2.05 and v3.0 (including an OPC client with its source code)
  - ✓ ActiveX Control + VBA code source generator
  - ✓ Wonderware I/O Server (DAServer, DDE, FastDDE, SuiteLink)
- Development libraries
  - ✓ DLL Library
  - ✓ MS Visual Studio (.NET/C#/VB/C++/C), Borland Delphi
  - ✓ National Instruments (LabWindows CVI, LabVIEW/VI)▲



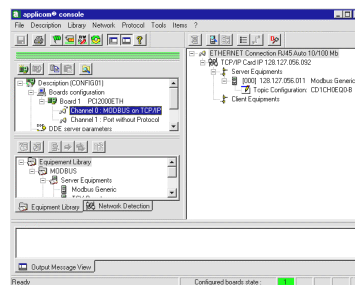
### Supported OS

#### Standard package

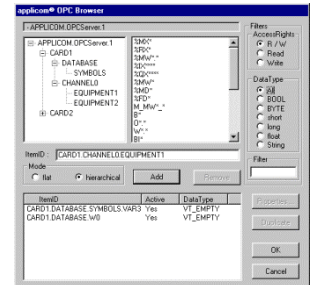
- Windows 32-bit (XP / 2000 SP3 / NT SP6)

#### Free Download

- Windows XP Embedded, VenturCom RTX, VxWorks, QNX, Linux, DOS



- Configuration Software -



- OPC Server -

### Compatible with



Distribución: ER-SOFT, S.A. Email: [er@er-soft.com](mailto:er@er-soft.com), Tel: +34 916 408 408

## applicom® PCU2000ETH



### Communication Ports

#### 1 Ethernet port

<b>Port Type</b>	1 Ethernet port - IEEE 802.3 for industrial and office (NDIS driver for XP/2000/NT)
<b>Connector</b>	10/100baseT (RJ45)
<b>LED Indicators</b>	4 leds - TX, RX, Link, 100 Mbps
<b>Speed</b>	10/100 Mbps (Auto-negotiation)

+

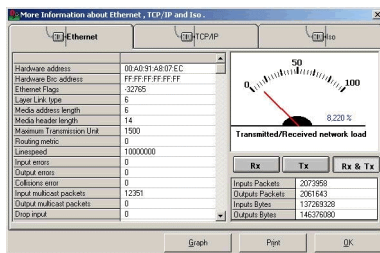
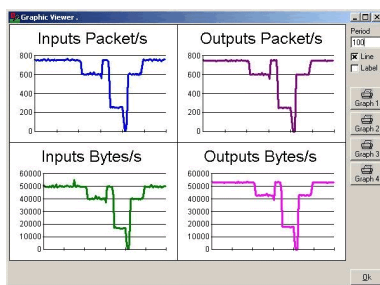
#### 1 Profibus port

<b>Port Type</b>	1 Profibus port (EN 50 170)
<b>Connector</b>	D-Sub, 9 pin, female
<b>LED Indicators</b>	2 leds - TX / RX
<b>Electrical Interface</b>	RS485 with galvanic insulation (500 V)
<b>Speed</b>	9600 bps to 1.5 Mbps

or

#### 1 Serial port

<b>Port Type</b>	1 asynchronous serial port
<b>Connector</b>	D-Sub, 9 pin, male
<b>LED Indicators</b>	2 leds - TX / RX
<b>Electrical Interface</b>	RS485/RS422 with galvanic insulation (500 V)
<b>Speed</b>	50 bps to 38.400 Kbps



- Network Diagnostic Tools -

### Hardware Specifications

<b>Unit</b>	PCI rev 2.2, 32-bit, 33 MHz, PCI Universal 3.3V/5V keying, PCI-X compatible
<b>Processor</b>	AMD SC520 - 133 MHz
<b>Memory</b>	8 Mbytes SDRAM
<b>Flash Memory</b>	1 Mbytes
<b>Interruption</b>	Hardware Plug&Play
<b>DPRAM Address</b>	Hardware Plug&Play (32 Kbytes used per board)
<b>Digital I/O</b>	Opto-coupled discrete input Voltage -> DC +10 to +30 or AC 24 V (50 to 60 Hz) "Watchdog" output contact free from potential (floating) (24V DC, 0.25 A)
<b>Dimensions (L x W)</b>	175mm x 107mm (6.89" x 4.21")
<b>Consumption</b>	5.5 W
<b>Temperature</b>	Operating: 0° C (32° F) up to +65° C (149° F) Storage: -40° C (-40° F) up to +85° C (185° F)
<b>EMC Compliance</b>	EN55022 Class B, EN61000-6-2, EN61000-3-2, EN61000-3-3

### Protocols (all included in the package)

<b>Ethernet TCP/IP</b>	<ul style="list-style-type: none"> <li>Allen Bradley - EtherNet/IP (ControlLogix, PLC-5 &amp; SLC 500 Series)</li> <li>Alstom - SRTP (Alspa C80-35 and C80-75)</li> <li>Altus - AInet II (AL2000 and WebGate Series)</li> <li>GE Fanuc - SRTP (90-30 and 90-70 Series)</li> <li>Mitsubishi - Melsec (A and Q Series)</li> <li>Omron - FINS (C, CV and CS Series)</li> <li>Schneider - Open Modbus TCP (TSX Premium, TSX Micro, etc)</li> <li>Schneider - Uni-TE (TSX Premium, TSX Micro, etc)</li> <li>Send/Receive on UDP (dev. free messaging on UDP)</li> <li>Siemens - Industrial Ethernet (S5, S7 and TI-505 Series)</li> <li>Development toolkit for TCP and UDP protocols in client/server modes</li> </ul>
<b>Ethernet Profibus</b>	<ul style="list-style-type: none"> <li>Schneider - Ethway (TSX Premium, TSX Micro, etc)</li> <li>Siemens - Industrial Ethernet ISO (S5, S7, TF and TI Series)</li> </ul>
<b>Serial</b>	<ul style="list-style-type: none"> <li>Profibus-DP V0 Master Class-1 &amp; Class-2 - All DP slaves devices</li> <li>FDL for S5 Master - Siemens S5</li> <li>S7 / MPI Master - Siemens S7-300, S7-400</li> <li>Send/Rec on FDL - Dev. your free messaging on Profibus-FDL</li> <li>FMS Client/Server - All FMS devices (on request)</li> </ul> <p>3964/3964R, AS511, DataLink, DF1, Modbus, PPI/PPI+, Saia-BUS, SNP-X, Sucoma, Sysmac-Way, TI-Direct, Uni-Telway, and dev. toolkit for Serial protocols.</p>

### Ordering Information

Part Number	Product description
<b>APP-ETH-PCU</b>	applicom® PCU2000ETH Ethernet TCP/IP 10/100 Mbps card, Universal PCI bus (3.3V / 5V)
<b>APP-EPB-PCU</b>	applicom® PCU2000ETH Combo Ethernet 10/100 Mbps + Profibus 1.5 MB card, Universal PCI bus (3.3V / 5V)
<b>APP-ESR-PCU</b>	applicom® PCU2000ETH Combo Ethernet 10/100 Mbps + Serial RS485/422 card, Universal PCI bus (3.3V / 5V)
<b>APP-DRV-AB</b>	applicom® driver for AB PCCC messaging

Other related products: IP67/IP20 Ethernet switches, Software solution based on standard Ethernet card, Ethernet I/O for control/command, Ethernet connectivity.

To contact us: [www.woodhead.com](http://www.woodhead.com)

Europe: France, +33 2 32 96 04 20 – Germany, +49 711 782 3740 – Italy, +39 010 59 30 77 – United Kingdom, +44 1495 356300

North America: Canada, +1 519 725 5136 - USA, +1 800 225 7724

Asia: China, +86 21 50328080 – Singapore, +65 261 6533 – Japan, +81 3 5791 4621

This document is for informational purposes only and is not contractual. We reserve the right to change or discontinue a product described herein are the property of

