



applicom® Profibus interface cards allow you to connect your computer to Profibus DP, MPI/S7, FDL Networks.

applicom® is the easiest and trouble free solution to quickly connect your PC-Based application to the industrial world.

07 Jan. 05

## Profibus Network Interface Cards

Best choice for SCADA/HMI applications

### Features

- Complete and user-friendly package
  - ▶ All components in the box
  - ▶ 2 years of hardware warranty
  - ▶ Local technical support with worldwide representation
  - ▶ 1 driver / 1 configuration tool for all protocols
  - ▶ Graphical User Interface
  - ▶ Network diagnostic and test tools
- COMBO protocol: Run all Profibus protocols simultaneously (DP, S7, MPI, FDL, etc)
- COMBO offer =
  - PFB Full 12Mb + PFB S7/MPI 187.5 Kbps
  - OR
  - PFB Full 12Mb + Serial 38.4Kbps
- On-board processor eliminates data bottle necks, ensuring delivery of time critical information
- Speed: 9.6 Kbps up to 12 Mbps
- Each card onboard an internal Data Base (32 Kwords + 32 Kbits)
- Compatible with:
  - ▶ Simatic® S5 Series (95U, 115U, 135U, 155U)
  - ▶ Simatic® S7 Series (S7-300, S7-400)
- Certified with more 50 major SCADA/HMI packages

### Supported OS

Standard package

- Windows 32-bit (XP / 2003 Server / 2000 SP3 / NT SP6)

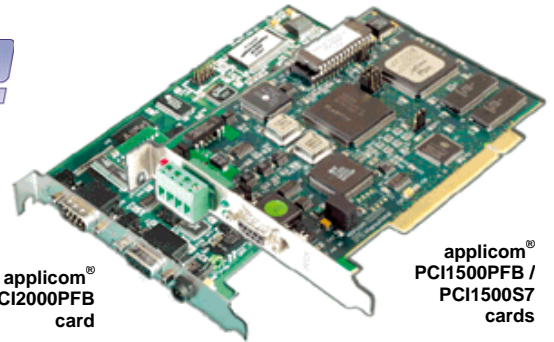
Free Web Download

- Windows XP Embedded, VenturCom RTX, VxWorks, QNX, Linux, Dos

Woodhead is a member of PTO (PROFIBUS Trade Organization), PNO (PROFIBUS Nutzerorganisation e. V.) and France Profibus.



applicom®  
PCI2000PFB  
card



applicom®  
PCI1500PFB /  
PCI1500S7  
cards



### Overview

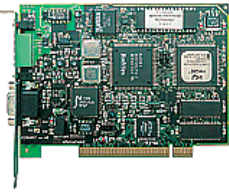
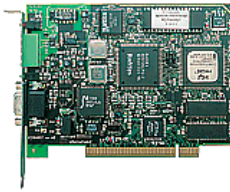
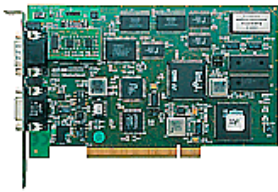
Based on a unique industrial communications concept, applicom® network interface cards are the **fastest, open, trouble-free** solution for interfacing PC-based applications (HMI, SCADA, MES, RDBM, spreadsheets, custom applications) and devices (PLCs, I/O modules, etc.) connected to industrial networks.

Thanks to smart technology, all applicom® cards (on-board processor) are able to execute all management and the processing of communications protocols (polling, frame management, etc.), resulting in **extremely fast, reliable, efficient application performance.**

For your convenient, the standard package includes:

- Console software for configuration and initialization
- Powerful test and diagnostic tools
- Data servers
  - OPC DA 1.0a, 2.05 and 3.0 (including OPC client with VC++ code source)
  - ActiveX control + VBA code source generator for VB6
  - Wonderware I/O server (DAServer, FastDDE, SuiteLink)
- Development libraries for programming languages (DLL):
  - Visual Studio (C, C#, VC++, VB), Delphi, Borland, Windev
  - National Instruments (LabWindows CVI, VI for LabVIEW)

## Technical data

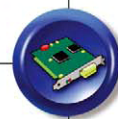
	applicom® PCI1500PFB	applicom® PCI1500S7	applicom® PCI2000PFB
			
<b>Key Benefits</b>	<ul style="list-style-type: none"> <li>• <b>Run all Profibus protocols simultaneously</b></li> <li>• <b>On-board processor</b></li> </ul>	<ul style="list-style-type: none"> <li>• <b>Economic solution - Dedicated to Siemens Simatic® S7</b></li> <li>• <b>FDL &amp; S7 simultaneously</b></li> <li>• <b>On-board processor</b></li> </ul>	<ul style="list-style-type: none"> <li>• <b>COMBO - 2 Profibus ports</b></li> <li>• <b>Speed up to 12 Mbps</b></li> <li>• <b>DP-V0 Master / Slave simultaneously</b></li> <li>• <b>On-board processor</b></li> </ul>
<b>Hardware</b>			
<b>Unit</b>	PCI 2.2, short card, single slot, 5V	PCI 2.2, short card, single slot, 5V	PCI 2.2, short card, single slot, 5V
<b>Processor</b>	Intel 80486DX4	Intel 80486DX4	AMD SC520 - 133 MHz
<b>ASIC</b>	-	-	ASPC2
<b>Memory</b>	4 Mbytes SDRAM	4 Mbytes SDRAM	8 Mbytes SDRAM
<b>Flash Memory</b>	-	-	512 Mbytes
<b>Interruption</b>	Hardware Plug&Play	Hardware Plug&Play	Hardware Plug&Play
<b>DPRAM Address</b>	Hardware Plug&Play (2 Kbytes)	Hardware Plug&Play (2 Kbytes)	Hardware Plug&Play (32 Kbytes)
<b>Discrete Input</b>	Opto-coupled discrete input, Voltage -> +10 to +30 DC or 24 V AC (50-60 Hz)	Opto-coupled discrete input, Voltage -> +10 to +30 DC or 24 V AC (50-60 Hz)	Opto-coupled discrete input with LED -> DC +10 to 30 or AC 24 V (50 to 60 Hz)
<b>Discrete Output</b>	« Watchdog » output contact free from potential, (floating) (24V DC, 0.25A)	« Watchdog » output contact free from potential, (floating) (24V DC, 0.25A)	« WatchDog » output contact free from potential (floating) (24 V DC, 0.25 A) with LED
<b>Dimensions (LxW)</b>	145mm x 106mm (5.70" x 4.17")	145mm x 106mm (5.70" x 4.17")	175mm x 107mm (6.89" x 4.21")
<b>Consumption</b>	6 W	6 W	5.5 W
<b>Operating T°</b>	0° C (32° F) ↔ +70° C (149° F)	0° C (32° F) ↔ +70° C (149° F)	0° C (32° F) ↔ +65° C (149° F)
<b>Storage T°</b>	-40° C (-40° F) ↔ +80° C (176°)	-40° C (-40° F) ↔ +80° C (176°)	-40° C (-40° F) ↔ +80° C (176°)
<b>EMC Compliance<sup>(1)</sup></b>	EN55022 Class B, EN61000-6-2, EN61000-3-2, EN61000-3-3	EN55022 Class B, EN61000-6-2, EN61000-3-2, EN61000-3-3	EN55022 Class B, EN61000-6-2, EN61000-3-2, EN61000-3-3
<b>Communication port</b>			
<b>Port type</b>	1 Profibus port (EN 50170)	1 Profibus port (EN 50170)	<b>2 Profibus ports<sup>(2)</sup> (EN 50170)</b>
<b>Connector</b>	Profibus D-Sub, 9 pin, female	Profibus D-Sub, 9 pin, female	Profibus D-Sub 9 pin, female
<b>LED Indicator</b>	2 leds: TX / RX	2 leds: TX / RX	2 bicolor leds: TX/RX, Bus fault, Status
<b>Electrical Interface</b>	RS485 optical insulation (500 V)	RS485 optical insulation (500 V)	RS485 optical insulation (500 V)
<b>Baud Rate</b>	9.6 kbps ↔ 1.5 Mbps	9.6 kbps ↔ 1.5 Mbps	Port1: 9.6 kbps ↔ <b>12 Mbps</b> Port2: 9.6 kbps ↔ 187,5 Kbps
<b>Supported Protocols</b>			
<b>Protocol</b>	<ul style="list-style-type: none"> <li>• Profibus DP-V0 (Master)</li> <li>• S7 / MPI (Master)</li> <li>• PPI/PPI+ (Master)</li> <li>• Send/Receive on FDL</li> <li>• FDL S5 (Master)</li> <li>• Profibus-FMS (on request)</li> </ul>	<ul style="list-style-type: none"> <li>• S7 / MPI (Master)</li> <li>• PPI/PPI+ (Master)</li> <li>• Send/Rec on FDL</li> </ul>	<ul style="list-style-type: none"> <li>• Profibus DP-V0 (Master/Slave)</li> <li>• S7 / MPI (Master)</li> <li>• Send/Receive on FDL</li> <li>• PPI/PPI+<sup>(3)</sup> (Master)</li> <li>• FDL S5<sup>(3)</sup> (Master)</li> <li>• Profibus-FMS<sup>(3)</sup> (on request)</li> </ul>

(1): EN55022 Class B, EN61000-6-2, EN61000-3-2, EN61000-3-3




(2): You can replace the Profibus Port2 by a Serial port (RS232 or RS485, speed up to 38.4 Kbps) that is able to run any Serial protocols of the applicom® offer (Modbus RTU / ASCII, AS511, 3964/3964R, TI-Dir , Uni-Telway, DF1, SNPX, etc).

(3): Port2 of the card

# Profibus Network Interface Cards

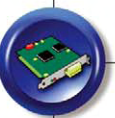


## Technical data

	applicom® PCU1500PFB	applicom® PCU1500S7	applicom® CPCI1000PFB
			
<b>Key Benefits</b>	<ul style="list-style-type: none"> <li>• Run all Profibus protocols simultaneously</li> <li>• Universal PCI 3.3 V / 5V (PCI-X compatible)</li> <li>• On-board processor</li> </ul>	<ul style="list-style-type: none"> <li>• Universal PCI 3.3 V / 5V (PCI-X compatible)</li> <li>• Economic solution - Dedicated to Siemens Simatic® S7</li> <li>• Run FDL &amp; S7 simultaneously</li> <li>• On-board processor</li> </ul>	<ul style="list-style-type: none"> <li>• Economic solution - Dedicated to Siemens Simatic® S7</li> <li>• Run FDL &amp; S7 simultaneously</li> <li>• CompactPCI form factor</li> </ul>
<b>Hardware</b>			
<b>Unit</b>	PCI 2.2, short card, single slot, 3,3V/5V	PCI 2.2, short card, single slot, 3,3V/5V	CompactPCI board, 5V
<b>Processor</b>	AMD SC520 - 133 MHz	AMD SC520 - 133 MHz	AMD SC520 – 133 MHz
<b>ASIC</b>	–	–	ASPC2
<b>Memory</b>	8 Mbytes SDRAM	8 Mbytes SDRAM	8 Mbyte dynamic RAM
<b>Flash Memory</b>	1 Mbytes	1 Mbytes	512 kbytes
<b>Interrupt</b>	Hardware Plug&Play	Hardware Plug&Play	Hardware Plug&Play
<b>DPRAM Address</b>	Hardware Plug&Play (32 Kbytes)	Hardware Plug&Play (32 Kbytes)	Hardware Plug&Play (32 Kbytes)
<b>Discrete Input</b>	Opto-coupled discrete input, Voltage -> +10 to +30 DC or 24 V AC (50-60 Hz)	Opto-coupled discrete input, Voltage -> +10 to +30 DC or 24 V AC (50-60 Hz)	ns
<b>Discrete Output</b>	« Watchdog » output contact free from potential, (floating) (24V DC, 0.25A)	« Watchdog » output contact free from potential, (floating) (24V DC, 0.25A)	ns
<b>Dimensions (LxW)</b>	175mm x 107mm (6.89" x 4.21")	175mm x 107mm (6.89" x 4.21")	100mm x 160mm (3.93" x 6.29") - 3U
<b>Consumption</b>	5.5 W	5.5 W	5 W (max. 0.8A)
<b>Operating T°</b>	0° C (32° F) up to +65° C (149° F)	0° C (32° F) up to +65° C (149° F)	0° C (32° F) ↔ +65° C (149° F)
<b>Storage T°</b>	-40° C (-40° F) up to +85° C (185° F)	-40° C (-40° F) up to +85° C (185° F)	-40° C (-92° F) up to +80° C (176° F)
<b>EMC Compliance<sup>(1)</sup></b>	EN55022 Class B, EN61000-6-2, EN61000-3-2, EN61000-3-3	EN55022 Class B, EN61000-6-2, EN61000-3-2, EN61000-3-3	EN55022 Class B, EN61000-6-2, EN61000-3-2, EN61000-3-3
<b>Communication port</b>			
<b>Port type</b>	1 Profibus port (EN 50170)	1 Profibus port (EN 50170)	1 Profibus port (EN 50170)
<b>Connector</b>	Profibus D-Sub, 9 pin, female	Profibus D-Sub, 9 pin, female	Profibus D-Sub, 9 pin, female
<b>LED Indicator</b>	2 leds: TX / RX	2 leds: TX / RX	1 Status LED / 1 Bus Fault LED
<b>Electrical Interface</b>	RS485 optical insulation (500 V) (optional: Profibus D-Sub 9-pin attach vertical connector with diagnostics)	RS485 optical insulation (500 V) (optional: Profibus D-Sub 9-pin attach vertical connector with diagnostics)	RS485 with galvanic insulation (500 volts)
<b>Speed</b>	from 9600 bps to 1,5 Mbps	from 9600 bps to 1,5 Mbps	9600 kbps ↔ 12 Mbps
<b>Supported Protocols</b>			
<b>Protocol</b>	<ul style="list-style-type: none"> <li>• Profibus DP-V0 (Master)</li> <li>• S7 / MPI (Master)</li> <li>• PPI/PPI+ (Master)</li> <li>• Send/Receive on FDL</li> <li>• FDL S5 (Master)</li> <li>• Profibus-FMS (on request)</li> </ul>	<ul style="list-style-type: none"> <li>• S7 / MPI (Master)</li> <li>• PPI/PPI+ (Master)</li> <li>• Send/Rec on FDL</li> </ul>	<ul style="list-style-type: none"> <li>• Profibus DP-V0 (Master &amp; Slave)</li> <li>• S7 / MPI (Master)</li> <li>• PPI/PPI+ (Master)</li> <li>• Send/Rec on FDL</li> </ul>

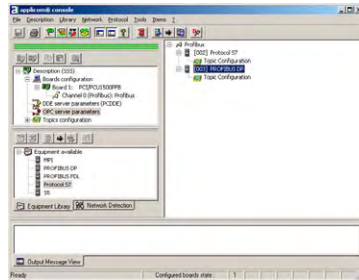


# Profibus Network Interface Cards

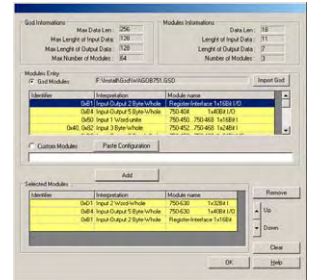


## Software tools

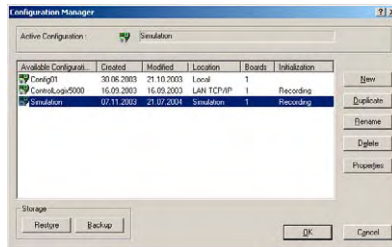
The core of applicom<sup>®</sup> solutions lies in effective software tools enabling fast integration of industrial communication into your applications.



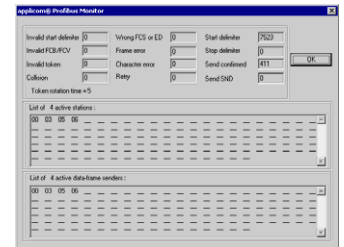
- Configuration Software -



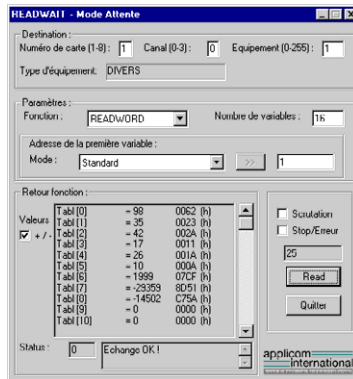
- GSD Editor -



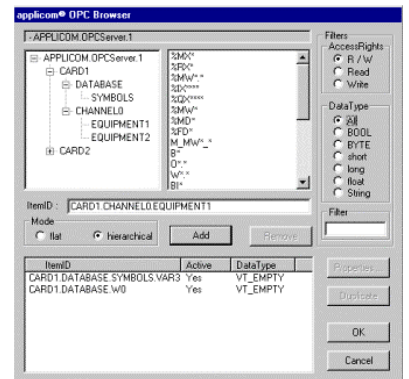
- User's configuration manager -



- Profibus Troubleshooting Tool -



- Testing tools -



- OPC Browser -

## Ordering Information

Part Number	Description
APP-PS7-PCI	applicom <sup>®</sup> PCI1500S7 Profibus S7/MPI 1.5Mb PCI card (5V)
APP-PFB-PCI	applicom <sup>®</sup> PCI1500PFB Full Profibus 1.5Mb PCI card (5V)
APP-PF2-PCI	applicom <sup>®</sup> PCI2000PFB combo Full Profibus 12Mb + Profibus MPI 187.5 PCI card (5V)
APP-PFB-PCU	applicom <sup>®</sup> PCU1500PFB Full Profibus 1.5Mb card, Universal PCI 3.3V / 5V (PCI-X compatible)
APP-PS7-PCU	applicom <sup>®</sup> PCU1500S7 Profibus dedicated Simatic S7 1.5Mb card, Universal PCI 3.3V / 5V (PCI-X compatible)
APP-PFB-CPCI	applicom <sup>®</sup> CPCI1000PFB Full Profibus 12Mb card, Compact PCI
PA9D01-42	Profibus D-Sub 9-pin attach vertical connector with Diagnostics

Other related products: Combo Ethernet+Profibus (PCI2000ETH card). Form factors available (ISA, CompactPCI, PC/104). Profibus-DP M/S only (PCI-DPIO card). Low range S7/MPI solution (DRL-MPI-PCU card).

To contact us: [www.woodhead.com](http://www.woodhead.com)



Europe: France, +33 2 32 96 04 20 – Germany, +49 711 782 3740 – Italy, +39 010 59 30 77 –

United Kingdom, +44 1495 356300

North America: Canada, +1 519 725 5136 – USA, +1 800 225 7724

Asia: China, +86 21 50328080 – Singapore, +65 6261 6533 – Japan, +81 3 5791 4621

This document is for informational purposes only and is not contractual. We reserve the right to change or discontinue a product described herein and the property of