

BRAD HARRISON® MULTI-PORTS WITH FIELD ATTACHABLE HOMERUN CABLE



INDUSTRY:

- Material Handling
- Electronics
- Assembly Machinery

APPLICATIONS:

- Conveyors
- Specialty Assembly Machinery
- Robotics
- Electronics Assembly

BENEFITS:

- Flexible Cabling Options
- Stock Fewer Variations
- Easy Access Terminations
- Allows Increased Wiring Density

Finally. The first multi-port interconnection systems (MPIS®) with field attachable homerun cable are available in North America. These multi-ports are packed with features that take the headaches out of field wiring installations.

Designed with top entry or longitudinal cable option, cable decisions can be made right at the last instant. Dual Input/Output ports provide the versatility of increasing wiring densities and decreasing costs. Easy access terminal strips take the frustration out of accessing terminations and save time. End users can pull cables through tightly crammed raceways, make final wiring orientation decisions at the “last minute” and stock fewer versions due to their flexibility.

Whether your application is a conveyor where high-density wiring is a concern, specialty assembly machinery where different homerun cabling options are needed, robotics where specialty cabling options are crucial or electronics assembly where wiring density is a consideration, these multi-ports are adaptable and ready to perform.

Available in 4-, 6- and 8-port models with dual I/O, PNP DC Micro-Change® 5-pin input connectors, Brad Harrison® multi-ports with field attachable homerun cable are protected to IEC IP67 and NEMA 12.



BRAD HARRISON

TECHNICAL SPECIFICATIONS/ORDERING INFORMATION

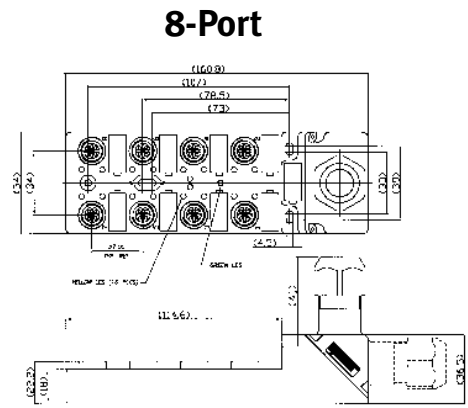
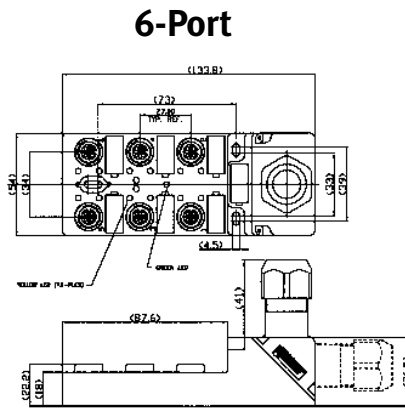
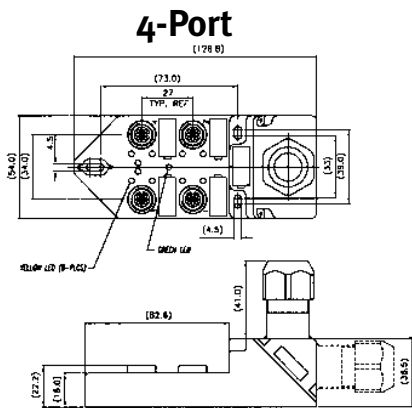
Voltage:	10-30VDC
Current:	2A per port; 12A max. total
Contact Resistance:	≤5mΩ
Insulation Resistance	>10mΩ
Protection Rating:	IP67, NEMA 12
Contact Material:	Copper
Contact Plating:	Nickel/Gold
Housing Material:	PA
O-Rings	Viton
Receptacle Shell:	CuZn/Ni
Max. Control Cable Diameter:	0.31-0.5" (8-14mm) PG16
Max. Wire Gauge in Screw Terminal:	18-Gauge (1.0mm ²)
Operating Temperature Range:	-25° to +90°C (-13° to +194°F)

FEATURES	BENEFITS
Field attachable control cable	Allows "last minute" cable length and specialty cabling decisions while allowing for pulling of multiconductor control cable through tight raceways
Top entry or longitudinal cable in a single design	Increased cable installation/routing flexibility and decreased need for stocking variations
Dual Input/Output ports	Increased wiring density decreases cost
Easy access terminal strips	Saves time and aggravation when you need to access terminations



ORDERING INFORMATION	
Woodhead Part Number	Description
BTY403P-FBA	4-Port
BTY603P-FBA	6-Port
BTY803P-FBA	8-Port
80013	Plugs

Note: Units are not supplied with homerun cable.



Woodhead Connectivity

SST • Brad Harrison • mPm

THE GLOBAL LEADER IN INDUSTRIAL COMMUNICATIONS AND CONNECTIVITY

United States

Woodhead L.P.
3411 Woodhead Drive
Northbrook, IL 60062
Tel. 847-272-7990
Fax. 847-272-8133

Canada

Woodhead Canada Limited
1090 Brevik Place
Mississauga, Ontario L4W 3Y5
Tel. 905-624-6518
Fax. 905-624-9151

Mexico

Woodhead de Mexico
Parque Industrial
Internacional Mexicano
Calle Intermex No. 1351
Cd. Juarez, Chih.32340
Tel. 52-1624-2504
Fax. 52-1624-4029

United Kingdom

Aero-Motive (U.K.) Limited
Factory No. 9
Rassau Industrial Estate
Ebbw Vale, Gwent, Wales NP3 5SD
Tel. 44-1495-350436
Fax. 44-1495-350877

France

Elitec S.A.
57, Rue Jacquard Z.I.
77400 Lagny Sur Marne
Tel. 33-1-6430-9136
Fax. 33-1-6430-9105

Germany

H.F. Vogel GmbH
Gewerbestraße 60
75015 Bretten-Gölshausen
Tel. 49-7252-9496-0
Fax. 49-7252-9496-99

Italy

mPm S.r.l.
Via Zucchi, 39 int. G
20095 Cusano Milanino (MI)
Tel. 39-02-66400321
Fax. 39-02-66400334

Singapore

Woodhead Asia Pte. Ltd.
8 Chia Ping Road #05-09/10
JTC Flatted Factory
Jurong Town 619973
Tel. 65-261-6533
Fax. 65-265-6605

Japan

Woodhead Japan Corporation
Landmark Tower, Unit 4309
Minatomirai 2-2-1, Nishi-ku
Yokohama-shi Kanagawa-kerr
Japan Postal Code 220-8143
Tel. 81-4-5224-3560
Fax. 81-4-5224-3561