



15 Nov. 04

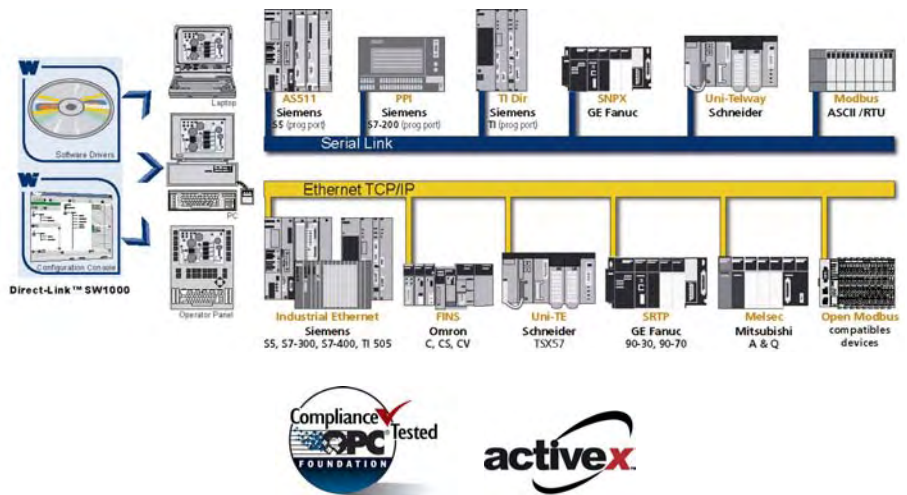
Direct-Link™ communication drivers provide data acquisition between Windows based applications and industrial devices connected to Ethernet TCP/IP and Serial networks.

Direct-Link™ SW1000

Economical and Reliable Industrial Communications

Features

- Well suited for embedded and light architecture (laptop, panel PC, MMI)
- Uses Standard PC resources
 - ▶ Ethernet port
 - ▶ Serial port (COM1, COM2)
- 100% software solution
- Data Servers:
 - ▶ OPC DA v2.0a and 1.0a
 - ▶ Wonderware I/O (SuiteLink/FastDDE)
 - ▶ ActiveX Control
 - ▶ Library DLL
- Supports multi Ethernet TCP/IP protocols simultaneously
- Protection
 - ▶ Software key
 - ▶ Dongle (Parallel or USB)
- Database (32Kbits, 32 Kwords) to exchange data with applications



Overview

Direct-Link™ SW1000 is a complete software package designed to connect your computer to Industrial Ethernet TCP/IP and Serial networks.

Direct-Link™ SW1000 is well adapted to embedded environments and it is used by operator interface manufacturers and OEM equipment manufacturers needing to make their computerized systems communicate.

Direct-Link™ SW1000 is ideally suited for small and medium-sized applications with low time constraints. It easily adapts to the light architectures of laptops, operator interfaces and workstations. Widely adopted in Industry, Direct-Link™ solutions are used for technical management in the building sector, electrical installations, tests and measurement.

To collect data, SW1000 uses existing computer resources (Ethernet port, COM ports) to connect a broad range of control and sensor devices from Allen-Bradley, Siemens, Schneider, and many others.

Economical and easy-to-use, the SW1000 package is designed for Windows PC-Based applications (HMI, SCADA, MES, RDBM, custom developments, etc), which require reliable data exchange with plant floor.

Available in Windows XP, 2000 and NT 4.0 environments, Direct-Link™ SW1000 integrates a powerful Console for configuration, diagnostic and test tools and data servers (OPC DA, Wonderware I/O server, ActiveX control, library DLL), that provide information for client applications▲

Compatible with



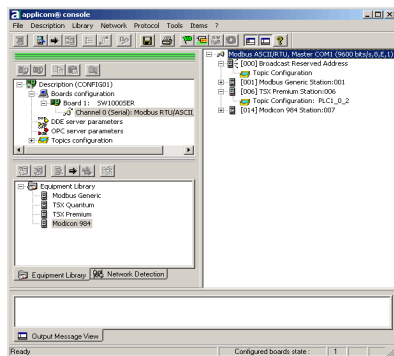
Distribución: ER-SOFT, S.A. Email: er@er-soft.com, Tel: +34 916 408 408

Direct-Link™ SW1000

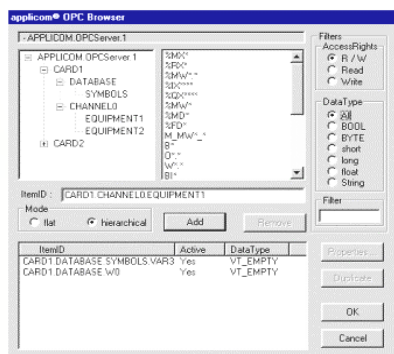


Software tools

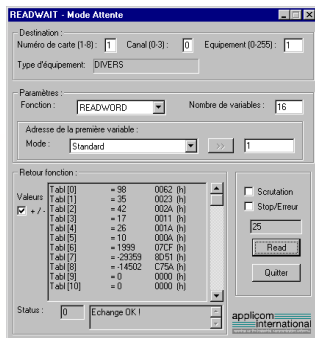
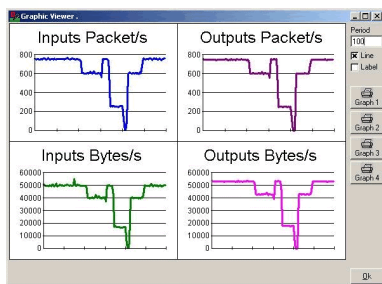
Direct-Link™ products lie in effective software tools enabling fast integration of industrial communication into your applications.



- Configuration Software -



- OPC Browser -



- Network Diagnostics & Test Tools -

Protocols (all included in the package)

Ethernet TCP/IP - all protocols can run simultaneously

- Altus - Alnet II (AL2000 and WebGate Series)
- Alstom - SRTP (Alspa C80-35 and C80-75 Series)
- GE Fanuc - SRTP (90-30 and 90-70 Series)
- Mitsubishi - Melsec (A and Q Series)
- Omron - FINS (C, CV and CS Series)
- Schneider - Open Modbus TCP (TSX 17, 37, 57 Series)
- Schneider - Uni-TE (TSX 17, 37, 57 Series)
- Siemens - Industrial Ethernet (S5, S7 and TI-505 Series)

C/S
C/S
C/S
C/S
C/S
C/S
C/S
C/S

Serial

- Modbus ASCII & RTU
- GE Fanuc - SNPX (90-xx and 80-xx Series)
- Schneider - Uni-Telway (TSX 17, 37, 57 Series)
- Siemens - AS511 (Simatic S5 Series)
- Siemens - PPI/PPI+ (Simatic S7-200 Series)
- Siemens - Ti-Dir (Simatic TI-505 Series)

M/S
M
S, C/S
M
M
M

M: Master - S: Slave - M/S: Master/Slave - C/S: Client/Server

Ordering Information

Part Number	Product description
DRL-ALL-SWL-X*	Direct-Link™ SW1000 software package. All protocols and data servers included. Ethernet TCP/IP 1000 tags + Serial Full tags .
DRL-ALL-SWF-X*	Direct-Link™ SW1000 software package. All protocols and data servers included. Ethernet TCP/IP Full tags + Serial Full tags .

(*): to order, replace X with the corresponding letter below.

Replace X	Type of protection
S	Software Key
P	Dongle for parallel port (small format)
U	Dongle for USB port (not supported on NT 4)

The performance of SW1000 depends on the operating system and the characteristics of your PC (processor, memory, etc). If in the future, your application requires increased performance, it is very easy to migrate SW1000 to **applicom**® solutions based on intelligent network interface cards (on-board processor managing industrial protocols, multi communication channels up to 32, embedded electrical interfaces RS232/RS422/RS485/Current loop).

To contact us: www.woodhead.com



Europe: France, +33 2 32 96 04 20 – Germany, +49 711 782 3740 – Italy, +39 010 59 30 77 – United Kingdom, +44 1495 356300
North America: Canada, +1 519 725 5136 - USA, +1 800 225 7724
Asia: China, +86 21 50328080 – Singapore, +65 261 6533 – Japan, +81 3 5791 4621

This document is for informational purposes only and is not contractual. We reserve the right to change or discontinue a retained herein are the property of their