



Sept..2004

applicom® Serial cards allow you to connect your computer to industrial networks.

applicom® is the easiest and trouble free solution for data acquisition between PC-Based applications and industrial world.

Serial Network Interface Cards

Best choice for SCADA/HMI applications

Features

- 1, 2 or 4 Serial ports
- Large choice of Serial protocols, all included in the package.
- Certified with more than 50 SCADA/HMI packages
- On-board processor eliminates data bottle necks, ensuring delivery of time critical information

Electrical Interfaces available:

- ▶ RS232C
- ▶ RS485 / RS422
- ▶ Current Loop
- ▶ Profibus RS485

all with or without galvanic insulation (opto couplers).

- Speed: 50 to 38.400 Kbps
- Embedded Database (32 Kwords + 32 Kbits)
- Gateway feature with PC14000 Serial ↔ Serial Serial ↔ Profibus
- Complete and user-friendly package:
 - ▶ All components in the box software+hardware
 - ▶ 2 years of hardware warranty
 - ▶ Local technical support with worldwide representation
 - ▶ 1 driver / 1 configuration tool for all protocols
 - ▶ Graphical User Interface

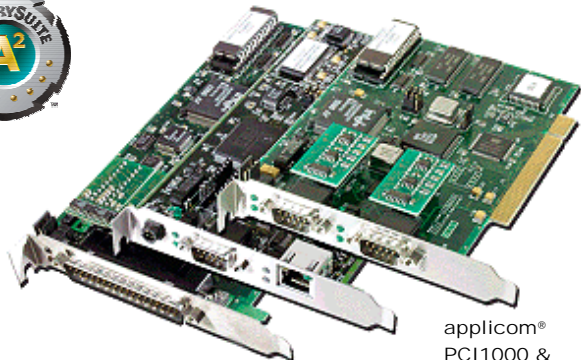
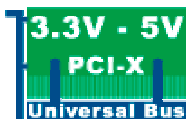
Supported OS

Standard package

- Windows 32-bit (XP / 2000 SP3 / NT SP6)

Free Web Download

- Windows XP Embedded, VenturCom RTX, VxWorks, QNX, Linux, DOS



applicom®
PCI4000 card

applicom®
PCI1000 card
(3.3V, 5V)

applicom®
PCI1000 &
PCI2000 cards

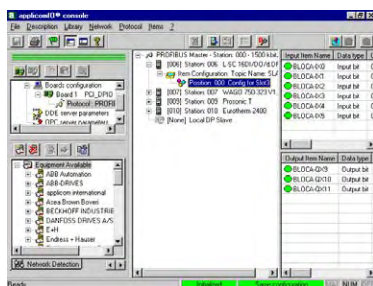
Overview

applicom® is a range of intelligent communication solutions, complete and ready to use covering more than 40 protocols among a wide choice of industrial networks and fieldbuses: Ethernet TCP/IP, Profibus, Modbus Plus, Data Highway Plus, WorldFIP and Serial Links. These solutions connect your PC-based applications (HMI, SCADA, MES, Custom applications) to industrial equipment (programmable controller, I/O modules, devices...).

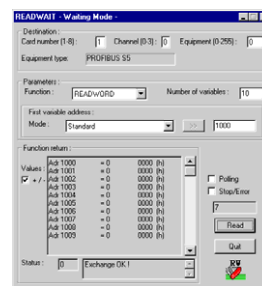
Thanks to applicom® smart technology- built-in processor, each interface cards is able to execute all management and the processing (polling, frame management, etc.) of communications protocols, resulting in extremely fast, efficient application performance.

The applicom® software package includes:

- Graphical configuration software.
- Test and network diagnostic tools.
- Data servers
 - ✓ OPC DA v1.0a, v2.05 and v3.0 (including an OPC client with its source code)
 - ✓ ActiveX Control + VBA code source generator
 - ✓ Wonderware I/O Server (DAServer, DDE, FastDDE, SuiteLink)
- Development libraries
 - ✓ DLL Library
 - ✓ MS Visual Studio (.NET/C#/VB/C++/C), Borland Delphi
 - ✓ National Instruments (LabWindows CVI, LabVIEW/VI)▲



- Console Software -






- Diagnostic Tool -

Woodhead



Technical Specifications

	applicom® PCI1000 / PCI-2000 (5V)	applicom® PCU1000 (3.3V / 5V)	applicom® PCI4000 (5V)
		 (RJ45 port is not usable)	
Key Benefits	<ul style="list-style-type: none"> • On-board processor • Gateway feature on 2 ports version 	<ul style="list-style-type: none"> • On-board processor • PCI Universal 3.3V / 5V 	<ul style="list-style-type: none"> • On-board processor • Gateway on 2 ports • Mixed up to 4 Serial or Profibus⁽²⁾ ports
Hardware			
Unit:	PCI (5V), short card, single slot	PCI Universal (3.3V / 5V), short card, single slot	PCI (5V), short card, single slot
Processor:	Intel 80386EX - 24 MHz	AMD SC520 - 133 MHz	Intel 80386EX - 30 MHz
Memory:	4 Mbytes	8 Mbytes	4 Mbytes
Interruption:	Hardware Plug&Play	Hardware Plug&Play	Hardware Plug&Play
DPRAM Address:	Hardware Plug&Play (2 Kbytes)	Hardware Plug&Play (32 Kbytes)	Hardware Plug&Play (32 Kbytes)
Optional Digital I/O:	1 Digital In + 1 Digital Out ⁽¹⁾	1 Digital Input / 1 Digital Output	1 Digital Input / 1 Digital Output
Dimensions (LxW):	145 x 106mm (5.70" x 4.17")	175mm x 107mm (6.89" x 4.21")	175 x 107mm (6.89" x 4.21")
Consumption:	4 W	5.5 W	4 W
Operating T°:	0° C (32° F) ↔ +70° C (158° F)	0° C (32° F) ↔ +70° C (149° F)	0° C (32° F) ↔ +70° C (158° F)
Storage T°:	-40° C (-40° F) ↔ +80° C (176°)	-40° C (-40° F) ↔ +85° C (185°)	-40° C (-40° F) ↔ +80° C (176°)
EMC Compliance	Yes, Industrial and Office use	Yes, Industrial and Office use	Yes, Industrial and Office use
Com port			
Port type:	PCI1000: 1 Async. Serial port PCI2000: 2 Async. Serial ports	1 Asynchronous Serial port	4 Asynchronous Serial or Profibus ⁽⁴⁾ ports
Connector:	D-Sub, 9 pin, male	D-Sub, 9 pin, male	D-Sub, 37 pin, male (see Remote Serial Splitter Box accessories).
LED Indicators:	2 leds: TX / RX	2 leds: TX / RX	On Remote Serial Splitter Box
Electrical Interface⁽³⁾:	RS485/422, galvanic insulation (500 V)	RS485/422, galvanic insulation (500 V)	RS845
Baud Rate:	50 ↔ 38400 bps	50 bps ↔ 38400 bps	50 bps ↔ 38400 Kbps

(1): The discrete Input/Output's are mounted on a special bracket (ref: IOSPKIT), and require an additional PC rear panel slot.

(2): Profibus ports available via Remote Serial Panels BX4010 or BX4010R.

(3): Also available on option: RS232 (2 or 6 wires), Current Loop 20mA by modifying the daughter card electrical interface.

(4): 1 x 500 Kbps Profibus port + 3 x 9600 bps Serial ports

1 x 500 Kbps Profibus port + 1 x 187.5 Kbps Profibus port + 2 x 9600 bps Serial ports

Serial Network Interface Cards



Accessories for applicom® PCI-4000 card

Remote Serial Splitter Boxes

A variety of remote serial splitter boxes are available to split the D-Sub 37 pin port of the applicom® PCI-4000 card into 4 D-Sub distinct ports. A junction cable is used to connect the card to the remote panel.

BR4000		
	Format:	Desktop version
	Port Type:	4 Serial ports, 9 pin, D-Sub male
	Dimensions (LxWxH):	185 x 110 x 30 mm (7.28 x 4.33 x 1.18")
	Junction cable:	1.5m (4.92")
	Operating T°:	0° C (32° F) ↔ +65° C (149° F)
	Storage T°:	-40° C (-40° F) ↔ +80° C (176°)

BX4010		
	Format:	Desktop version with galvanic insulation (2500V) based on opto couplers
	Port Type:	4 Serial ports, 9 pin, D-Sub male
	Dimensions (LxWxH):	275 x 175 x 67 mm (10.83 x 6.89 x 2.64")
	Junction cable:	1.5m (4.92")
	Operating T°:	0° C (32° F) ↔ +65° C (149° F)
	Storage T°:	-40° C (-40° F) ↔ +80° C (176°)
	LED Indicators:	2 leds: TX / RX
Power supply:	110V / 230V AC (internal switch)	

BX4010R		
	Format:	1U-19" rack version with galvanic insulation (2500V) based on opto couplers
	Port Type:	4 Serial ports, 9 pin, D-Sub male
	Dimensions (LxWxH):	483 x 200 x 45 mm (19.02 x 7.87 x 1.77")
	Junction cable:	1.5m (4.92")
	Operating T°:	0° C (32° F) ↔ +65° C (149° F)
	Storage T°:	-40° C (-40° F) ↔ +80° C (176°)
	LED Indicators:	2 leds: TX / RX
Power supply:	110V / 230V AC (internal switch)	

External Discrete Input / Output

The discrete Input / Output's are mounted on a special bracket, and require an additional rear panel slot.

IOSPKIT		
	Discrete Input:	Opto-coupled discrete input Voltage -> DC +10 to +30 or AC 24 V (50 to 60 Hz)
	Discrete Output:	"WatchDog" contact output LED; contact free from potential (floating) (24V DC, 0.25 A)
	Connector Type:	4-pin, Screw terminal connector



Serial Network Interface Cards



Protocols (all included with the package)

Serial		
	• Allen-Bradley - DF1 (PLC-5 and SLC Series)	M, C / S
	• GE Fanuc / Alstom - SNPX (90-XX and 80-XX Series)	M
	• Elsag Bailey - Data Link (5000 & 2000 Series)	M
	• Modbus RTU / ASCII	M / S
	• Moeller Group - SucomA (PS32, PS316 Series)	M
	• Omron - Sysmac Way	M
	• Saia Burgess - S-Bus (PCD Series)	M
	• Siemens - 3964/3964R Free or RK512	M, C / S
	• Siemens - AS511 (S5 Series)	M
	• Siemens - PPI / PPI+ (S7-200 Series)	M
	• Siemens - TI-Dir (TI-505 Series)	M
	• Schneider Electric - Uni-Telway (TSX 17, 37, 57)	M / S, C / S
	• Development toolkit for Serial protocols	M / S

Profibus		
	• Profibus-DP	M
	• FDL S5 (Simatic S5 95U, 115U, 135U, 155U)	M
	• Siemens - S7 / MPI (S7-300, S7-400 Series)	M
	• FDL Send/Receive	C / S
	• Profibus-FMS (on request)	M, C / S

M: Master, S: Slave, C: Client, S: Server

Ordering Information

Part Number	Description
APP-SR1-PCI	applicom [®] PCI1000, 1 Serial RS485/RS422 port, PCI (5V)
APP-SR1-PCU	applicom [®] PCU1000, 1 Serial RS485/RS422 port, PCI (3.3V / 5V)
APP-SR2-PCI	applicom [®] PCI2000, 2 Serial RS485/RS422 ports, PCI (5V)
APP-SR4-PCI	applicom [®] PCI4000, 4 Serial RS485/RS422 ports, PCI (5V)
APP-INT-232-N	RS232 electrical interface without galvanic insulation (2 units)
APP-INT-232-G	RS232 electrical interface with galvanic insulation (1 unit)
APP-INT-485-N	RS485/RS422 electrical interface without galv. insulation (2 units)
APP-INT-485-G	RS485/RS422 electrical interface with galvanic insulation (1 unit)
APP-INT-CL2-N	Current Loop 20 mA electrical interface (passive) (2 units)
APP-INT-PFB-G	Profibus 485 electrical interface with galvanic insulation (1 unit)
APP-SBX-BRD ⁽¹⁾	BR4000 Remote Serial Splitter Box, desktop version, 4 ports
APP-SBX-BXD ⁽¹⁾	BX4010 Remote Serial Splitter Box, desktop version, 4 ports, galvanic insulation
APP-SBX-BXR ⁽¹⁾	BX4010R Remote Serial Splitter Box, 19" 1U Rack Mountable, 4 ports, galvanic insulation

(1): Accessories for applicom[®] PCI4000 cards.

Other related products available:

- Combo solutions (Serial ↔ Ethernet/Profibus/Modbus Plus/ Fipway)
- Various form factors (CompactPCI, PC/104)
- Software solution based on PC Serial port

To contact us: www.woodhead.com

Europe: France, +33 2 32 96 04 20 – Germany, +49 711 782 3740 – Italy, +39 010 59 30 77 – United Kingdom, +44 1495 356300

North America: Canada, +1 519 725 5136 - USA, +1 800 225 7724

Asia: China, +86 21 50328080 – Singapore, +65 261 6533 – Japan, +81 3 5791 4621

This document is for informational purposes only and is not contractual. We reserve the right to change or discontinue a aided herein are the property of

Distribución: ER-SOFT, S.A. Email: er@er-soft.com, Tel: +34 916 408 408