



The BradCommunications™ SST PROFIBUS® Scanner connects your Allen-Bradley® ControlLogix® controller to PROFIBUS DP.

23 Mar. 07  
DW200588

## PROFIBUS® DP Scanner

For the Allen-Bradley® ControlLogix® Controller

### Features

- Remote Link Library functionality
  - Works with RSLinx® 2.2 OEM / Professional or later
- PROFIBUS DP Scanner can be used Local or through CIP networks on Remote Racks
- Certified PROFIBUS CommDTM driver for FDT Frame tools (SST-PFB-CLX-DTM)
- Provides user-defined data space up to 1984 Bytes Input and 1968 Bytes Output
- Supports all PROFIBUS baud rates including 45.45 kbps
- Manages DP-V1 Services
- Simultaneous operation of PROFIBUS DP Master and Slave
- Multiple SST-PFB-CLX-RLL modules can be used in one CLX rack



### Protocols

- PROFIBUS DP Master V0-Class 1&2
- PROFIBUS DP Master V1-Class 1&2
- PROFIBUS DP Slave V0

### Typical Applications

- Chemical or pharmaceutical application running PROFIBUS PA
- Machine builder application with high-speed control requirements

### Overview

The BradCommunications™ SST™ PROFIBUS® module connects your Allen-Bradley® ControlLogix® controller to PROFIBUS as a master or slave to scan or emulate PROFIBUS DP I/O. With the new user-defined data space of 1984 Bytes Input and 1968 Bytes Output, the BradCommunications™ SST™ PROFIBUS® module provides a cost efficient solution to connect ControlLogix CPU with large PROFIBUS networks.

### Remote Link Library

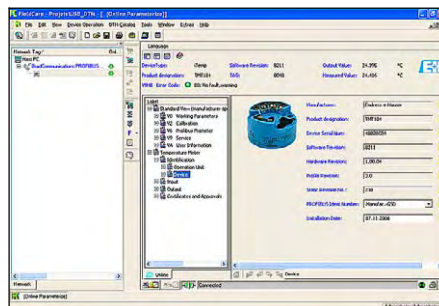
The Remote Link Library software provides added functionality to the BradCommunications SST PROFIBUS module by allowing you to remotely monitor or download changes to your PROFIBUS configuration. This is done by routing data from the BradCommunications SST PROFIBUS DP Master Configuration software through Rockwell Automation®'s RSLinx software via Ethernet to the Allen-Bradley ControlLogix backplane. The PROFIBUS Scanner can be used on a Local Rack or on a Remote Rack through CIP networks like EtherNet/IP or ControlNet

### CommDTM Driver for FDT Tools

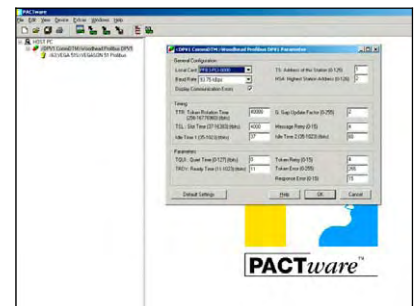
By purchasing SST-PFB-CLX-DTM part number, you will get the driver license to use the certified CommDTM driver conforms to FDT v1.2 specifications. It is the ideal solution for connecting FDT engineering tools such as PACTware™ or FieldCare™ to PROFIBUS. It allows the linking with Device DTMs for the configuration and diagnostics with DP-V1 devices including Profibus PA field instruments.



**BradCommunications™**  
from Woodhead Industries



- Fieldcare Screenshot -



- Pactware Screenshot -

## PROFIBUS® DP Scanner



### Diagnostic & Software Tools

#### BradCommunications™ SST™ Configuration Software

- Supports downloading and uploading configuration files through serial or Ethernet port
- Browse your DP network for slave devices you want to include in your DP Master configuration using the DPView component

#### Scanner Software

- Maintains slave status, diagnostic status information on all slaves, network diagnostic counters, and DP Master diagnostic counters
- Maintains network and I/O module status information including:
  - Active Slave Station Bit table
  - Configured Slave Station Bit table
  - Network diagnostic counters
  - DP Master diagnostic counters

#### Diagnostic LEDs

- COMM, SYS and OK LEDs provide immediate notification of network and system errors

#### Other PROFIBUS® Products

- PROFIBUS modules for Allen-Bradley® SLC™ 500 and PLC-5®
- PROFIBUS USB Adapter supporting CommDTM / FDT Version 1.2
- PROFIBUS network interface cards (PCI, C-PCI, PC/104, ISA, VME64) inclusive DLL, OPC, ActiveX...
- PROFIBUS gateways to ASi, Serial and Ethernet networks
- IP67 PROFIBUS I/O modules (M8/M12 connectors)
- Full metal PROFIBUS connector
  - IDC-technique provides quick and error-free connection
  - Optional diagnostic LED reduces downtime
- PROFIBUS media
  - Cable, cordsets, receptacles

### Network Specifications

Protocol	<ul style="list-style-type: none"> <li>• PROFIBUS DP Master V0 / V1, class 1&amp;2</li> <li>• PROFIBUS DP Slave V0</li> </ul>
LAN Controller	<ul style="list-style-type: none"> <li>• Siemens ASPC2</li> </ul>
Slaves Supported	<ul style="list-style-type: none"> <li>• Maximum of 125</li> </ul>
I/O per Slave	<ul style="list-style-type: none"> <li>• Maximum of 244 bytes in/out</li> </ul>
I/O Mapping (for ControlLogix®)	<ul style="list-style-type: none"> <li>• Maximum 1984 bytes input data</li> <li>• Maximum 1968 bytes output data</li> <li>• 250 words status</li> </ul>
Data Rate	<ul style="list-style-type: none"> <li>• All PROFIBUS data rates up to 12 Mbps</li> </ul>
Cable	<ul style="list-style-type: none"> <li>• Belden 3079A</li> <li>• Brad Harrison® 85-0001 PVR2 conductor with shield, UL-listed</li> </ul>
Connector	<ul style="list-style-type: none"> <li>• DB9 female connector</li> </ul>

### Hardware Specifications

Bus Interface	Allen-Bradley® ControlLogix® 5000
Processor	Intel i960
Memory	512 KB of local i960 RAM
	256 KB of onboard shared memory
Diagnostics	512 KB of sectored flash memory for storage of program and configuration data
	Three LEDs indicate: <ol style="list-style-type: none"> <li>1. health of the PROFIBUS network (COMM)</li> <li>2. communication status with PROFIBUS slaves (SYS)</li> <li>3. that initialization is complete and the module is ok (OK)</li> </ol>
Backplane Current Consumption	850 mA @ 5V or 1.75 mA @ 24V
Operating Temperature	0°C (32°F) up to +60°C (140°F)
Storage Temperature	-40°C (-40F) up to +85°C (185F)

### Ordering Information

Part Number	Description
SST-PFB-CLX-RLL	BradCommunications™ SST™ PROFIBUS Scanner for Allen-Bradley ControlLogix, includes Remote Link Library
SST-PFB-CLX-DTM	BradCommunications™ SST™ PROFIBUS CommDTM License driver for SST-PFB-CLX Scanner

Other related products:

Part Number	Description
SST-PFB-USB-DTM	BradCommunications™ SST™ PROFIBUS DP-V1 USB Adapter for FDT compliant field devices
SST-PB3-PCU	BradCommunications™ SST™ PROFIBUS Interface Card, Universal PCI 3.3/5V bus including CommDTM driver
PA9S01-42	PROFIBUS D-Sub connector, 90° format
PA9D01-42	PROFIBUS D-Sub connector with diagnostics, 90° format
PA9D0B-42	PROFIBUS D-Sub connector with diagnostics, 45° format
MA9D00-42	PROFIBUS D-Sub connector with diagnostics, 0° format
PBSTRIP	Cable stripping tool for use with PROFIBUS connector

**BradCommunications™**  
from Woodhead Industries

To contact us: [www.woodhead.com](http://www.woodhead.com)

Reference Number: DW200588

North America: US + 1 800 225 7724 - Canada, +1 519 725 5136

Europe: France, +33 2 32 96 04 20 - Germany, +49 711 782 3740 - Italy, +39 010 59 30 77 - United Kingdom, +44 1495 356300

Asia: China, +86 21 50328080 - Singapore, +65 261 6533 - Japan, +81 45 224 3560

Brad Harrison is a registered trademark and BradCommunications and SST are trademarks of Woodhead Industries, Inc. © 2005 Woodhead Industries, Inc.