



v1 – December 2004
DW200577

Woodhead's SST™ Profibus Interfaces provide high-performance control and the support required for your Profibus applications.

3rd Generation SST™ Interfaces

For Controlling and Monitoring Profibus Applications

Features

- Simultaneous execution of Profibus DP Master, DP Slave and FDL (layer 2)
- Manages PROFIBUS DP-V1 services
- Supports all standard Profibus baud rates: 9.6 Kbaud to 12 Mbaud
- Supports 16-bit transfers (VME D16) with both VME A24 (standard) and A16 (short I/O) address transfers
- Two versions of network interface cards provide the option of connecting to one or two independent Profibus networks
- Diagnostic LEDs for system status, watchdog timeout, and communications status

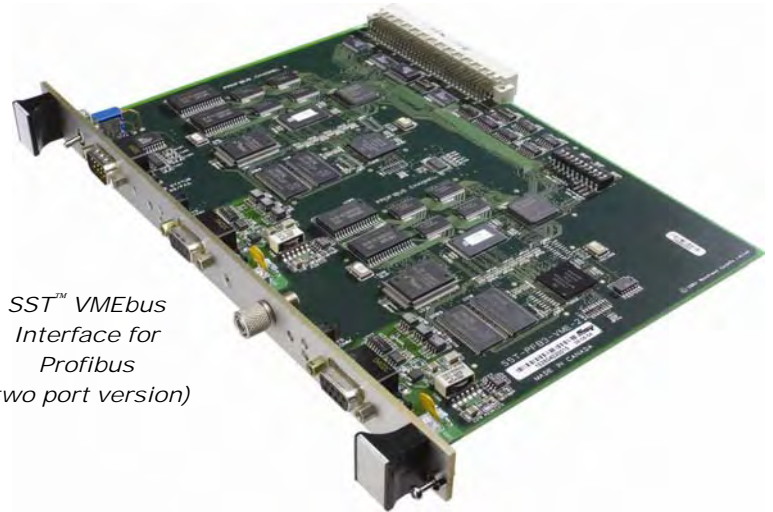
OS and Drivers Supported

Standard Package

- DP Configuration software for off-line configuration
- Custom driver development software
- Sample code and Microsoft Windows 32-bit kernel drivers



**Woodhead is a
member of
Profibus International**



*SST™ VMEbus
Interface for
Profibus
(two port version)*

Product Overview

The SST™ Profibus interface card connects your VMEbus computer to Profibus DP-V0, DP-V1 and FDL (layer 2) networks. It provides high-speed deterministic communication between automation systems and their decentralized peripherals.

The SST™ Profibus VME interface card connects the following to Profibus:

- VME based programmable controllers
- VME based motion controllers
- VME based computers

The SST™ Profibus VME interface card interfaces with the host processor through shared dual ported memory. A fully documented host memory interface is provided. The card does not require external libraries, which simplifies custom driver development in your chosen operating system. DOS example programs with C source are included with each card to assist you with your software development.

Configuration Tool

The PROFIBUS Console is an optional Windows-32-bit application, which supports the off-line commissioning of PROFIBUS DP-V0 and DP-V1 networks.

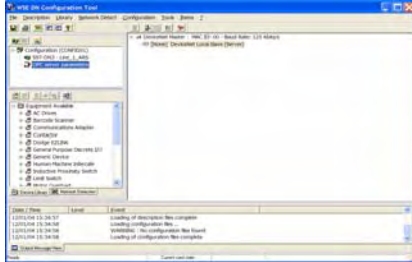
Very intuitive, the Drag & Drop user interface of the console provides a simple setup by using the PROFIBUS GSD files supplied by the manufacturer of the field devices. All configuration files will be downloaded later to the SST™ Profibus VMEbus card via the serial port. ▲

SST™ VME Interface Card



Software Tools

Software available for the SST™ Profibus Interface Cards enables fast integration of industrial communication into your application.



Configuration console for Off-line Configuration

Related products



Brad Harrison® PROFIBUS Diagnostic Plug 90°
Part number : PA9D01-42

Brad Harrison® PROFIBUS Diagnostic Plug 0°
Part number : MA9D01-42

Network Specifications

Protocol	<ul style="list-style-type: none"> • Profibus Master DP-V0, Class 1 and Class 2 • Profibus Slave DP-V0 • PROFIBUS Master DP-V1, Class 1 and Class 2 • FDL Layer 2
Data Rate	<ul style="list-style-type: none"> • All Profibus data rates up to 12Mbps
Cable	<ul style="list-style-type: none"> • Belden 3079A • Brad Harrison® 85-0001 PVR2 conductor with shield, UL-listed
Connector	<ul style="list-style-type: none"> • DB9 female connector per port/channel • Brad Harrison Diagnostic D-Sub connector part number: MA9D01-42
Isolation	<ul style="list-style-type: none"> • 1000 V

Hardware Specifications

Bus Interface	VME Spec VME54-compliant (Vita 1.1 1997)
Processor	ColdFIRE 5272
Memory	Minimum 256K Window in host memory map
Diagnostics	LEDs for system status, watchdog timeout, communications status
Interruption	DIP Switch selectable level IRQ 1 through 7 or none
Dimensions	Double-height (6U) module
Typical Current Draw	+5V +/- 5% 1-port / channel card: 800 mA 2-port / channel card: 1400 mA
Voltage Requirements	5V
Resources	Memory: 256K x 16-bit window per port / channel, located anywhere in VME standard space I/O: 32-byte range per port / channel, located on a 1k boundary determined by the DIP switch settings
Operating Temperature	0° C (32° F) up to +60° C (140° F)
Storage Temperature	-40° C (-40° F) up to +85° C (185° F)
Humidity	5% to 90% non-condensing

Ordering Information

Part Number	Product description
SST-PB3-VME-1	SST™ Profibus card, VMEbus, 1 port / channel
SST-PB3-VME-2	SST™ Profibus card, VMEbus, 2 ports / channels
SST-PB3-CNF-P SST-PB3-CNF-U	Configuration Console Application, parallel key Configuration Console Application, USB key

Other related products: IP67/IP20 Profibus I/O devices, gateway solutions, cable assemblies, diagnostic tools, network interfaces.



To contact us: www.woodhead.com

North America: US + 1 800 225 7724 -Canada, +1 519 725 5136

Europe: France, +33 2 32 96 04 20 – Germany, +49 711 782 3740 – Italy, +39 010 59 30 77 – United Kingdom, +44 1495 356300

Distribución: ER-SOFT, S.A. Email: er@er-soft.com, Tel: +34 916 408 408

i0
Industries, Inc.