

STRATON® Workbench

What's for?

- The STRATON integrated development environment is a set of powerful text and graphic editors for IEC 61131-3 languages: SFC, FBD, LD, ST, IL
- The workbench runs under Windows
- STRATON offers you the easiest way for developing your application with a wide range of powerful features

Features

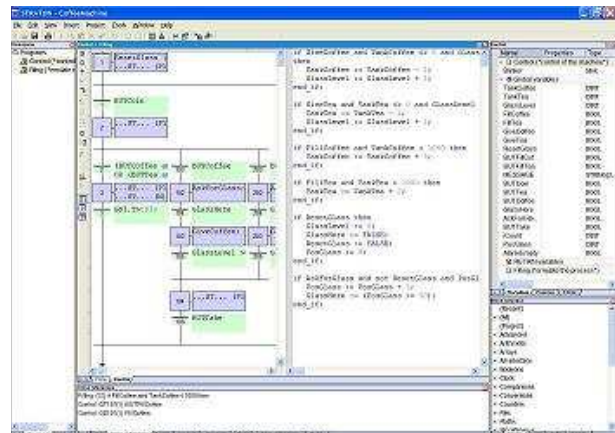
Fast: All the various features of STRATON® allow a faster development and an optimization of your applications.

Open: The dataserver is open for a best managing of your component: I/O, applications generator...

Integrable: Really easy to integrate on any kind of Integrated Development Environment.

Customizable: Possibility to customize STRATON® with your livery. Use in your products, the best of STRATON® (languages, features, ergonomics...).

Compatible SCADA: STRATON® is integrated in standard into ZenOn SCADA...



STRATON Workbench SR6

Products & References

PRODUCTS

Workbench limited 64 I/O
 Workbench limited 128 I/O
 Workbench limited 256 I/O
 Workbench limited 512 I/O
 Workbench unlimited I/O
 Wibu Dongle (USB /Parallel)

REF

IDE64
 IDE128
 IDE256
 IDE512
 IDEUN
 DONGUSB/DONGPAR



Features

Workbench: STRATON® is a Development Environment which support several languages: English, French, German, Italian, Spanish. With a full single windows for a best friendliness and a simple toolbar which allow and easy adaptation for the user. The Workbench use the "Drag&Drop" technology and have a powerfull online help.

IEC 61131-3 languages: STRATON® Workbench supports the 5 programming languages of the IEC 61131-3 Standard: Sequential Function Chart (SFC), Function Block Diagram (FBD), Ladder Diagram (LD), Structured Text (ST), and Instruction List (IL).

A powerfull compiler: STRATON® includes a high performance compiler that provides, at optional choice, different types of code.

Powerful Online change:

- You can freely add variables and function block instances during a change,
- You can change the mapping of individual I/O channels,
- You can lock and force any I/O or internal variables.

Online tools:

- Built-in simulation: A Virtual Machine is integrated with the workbench for simulation,
- Cycle to cycle mode,
- Start/Stop program individually,
- Debug instance of function blocks,
- Call stack,
- Recipes.

Others features:

- Generate of the complete HTML document,
- Nested User Defined Function Block (UDFB),
- Fully standard library,
- Monitoring tool,
- Monitoring viewer
- Creation of animated graphics; Re-use of these graphics in an Internet navigator. Creation of your own application by using graphic components and ActiveX technology
- Comparison of projects,
- Cross references management.

Database:

- Variable editing in several format,
- Instant access to variable lists,
- Open to any third party tools or applications.

Data types supported:

- Boolean
- Integer (8bits, 16bits, 32bits, 64bits)
- Real (32bits, 64bits)
- Timer
- String
- Array (up to 3 dimensions)
- Data structure

Application distribution:

The STRATON® Virtual Machine permits exchanging real time data among different runtime systems through TCP-IP. The event based protocol technology used ensures high performances and very low network traffic at runtime. The T5 protocol is based on a "publish-subscribe" model. Each runtime system may publish many variables on the network and consume variables from other runtime systems. The same published variable can be consumed in several destination nodes.

The value of the variable is sent on the network only when it changes in order to ensure low network traffic at runtime

Fieldbus configurator: Configure your fieldbus only with few clicks. Configuration or importing a fieldbus configuration is easy :

- MODBUS (Master/Slave),
- MODBUS TCP-IP (Master/Slave),
- ASi,
- Profibus, Profinet,
- CAN,
- CAN-Open,
- Interbus...

Connectivity: Flexibility into the management of:

- Input/Output boards,
- Profiled variables (Properties associated with each variable),
- Embedded symbols
- OPC...

ZenOn SCADA integrated solution: STRATON workbench is integrated in standard into the SCADA ZenOn:

- Multi-users: several people on the same project,
- Integrated management of the versions (check in/check out),
- SQL database,
- Single declaration of variables for both project control and scada.