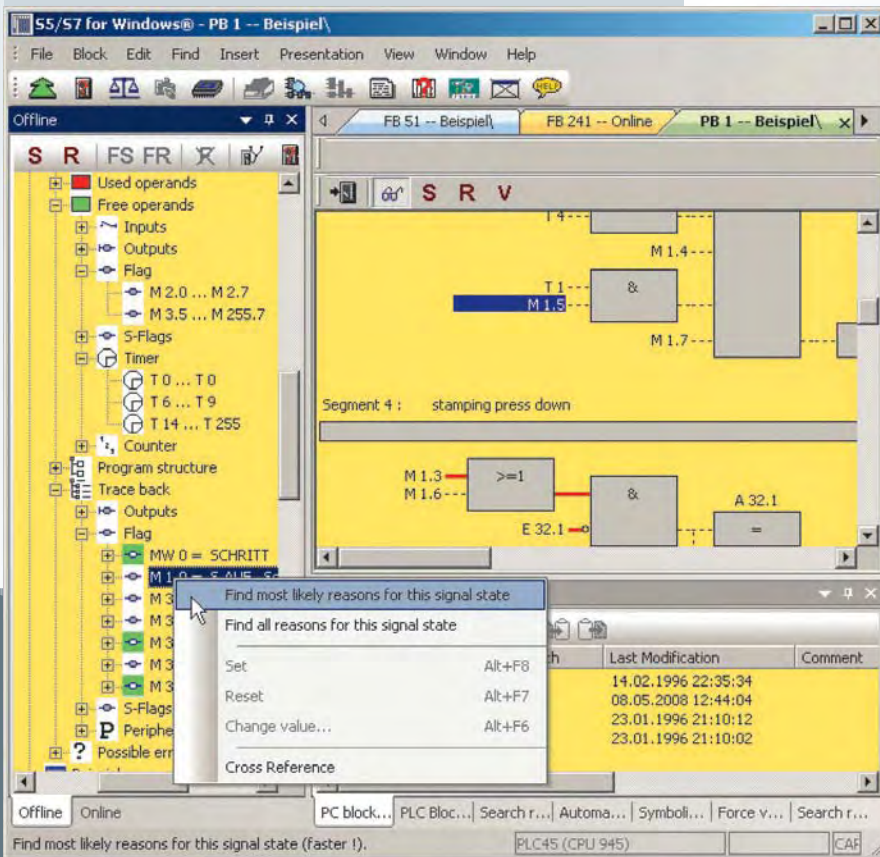


S5 for Windows® Version 6

Programming system for S5 PLC controls

S5 for Windows® provides the tools for creating, modifying, testing and documenting programs for programmable logic controllers (PLC). **S5 for Windows®** is designed for programming the Siemens PLC family SIMATIC® S5 with STEP®5. The Function Block Diagram (FBD), the Ladder Diagram (LAD) and the Statement List (STL) are used as presentations for S5. Existing S5 programs can be edited directly without im-/export. **S5 for Windows®** is compatible to the original Siemens programming unit. For automatic troubleshooting the **S5 Doctor** functions are integrated as well.

and/or the keyboard. Cross references and/or the corresponding symbol files are shown with the correct addresses. In this window the symbol file can be edited simultaneously. The allocation of new addresses with syntax check is integrated. Statement lists are created with the comfort of the integrated editor. The Windows® clipboard can be used for program or configuration manipulations in any place. Statement lists can be altered into function block or ladder diagrams, as far as they are displayable. The display of Function Block Diagrams and Ladder Diagrams in form of Statement Lists is always possible.



Create and correct

A comfortable editor to create and edit symbolic tables is integrated. Searching and replacing for any criteria as well as rewiring is possible. A syntax check is integrated. The new comfortable multiple segment editor for the creation of statement lists, function block diagrams and ladder diagrams allows the representation of complex functions too. Focus was set on the ease of use with the mouse

Program test during online operations

With **S5 for Windows®** multiple segments can be shown in the status display representations statement list, function block diagram and ladder diagram. The CPU status function provides information about interrupt stack, block stack and system data.

Calling the COM packages

S5 for Windows® allows calling the COM packages (Windows® 2000 and XP only). Communication to a PLC can be established via an USB adaptor for instance.