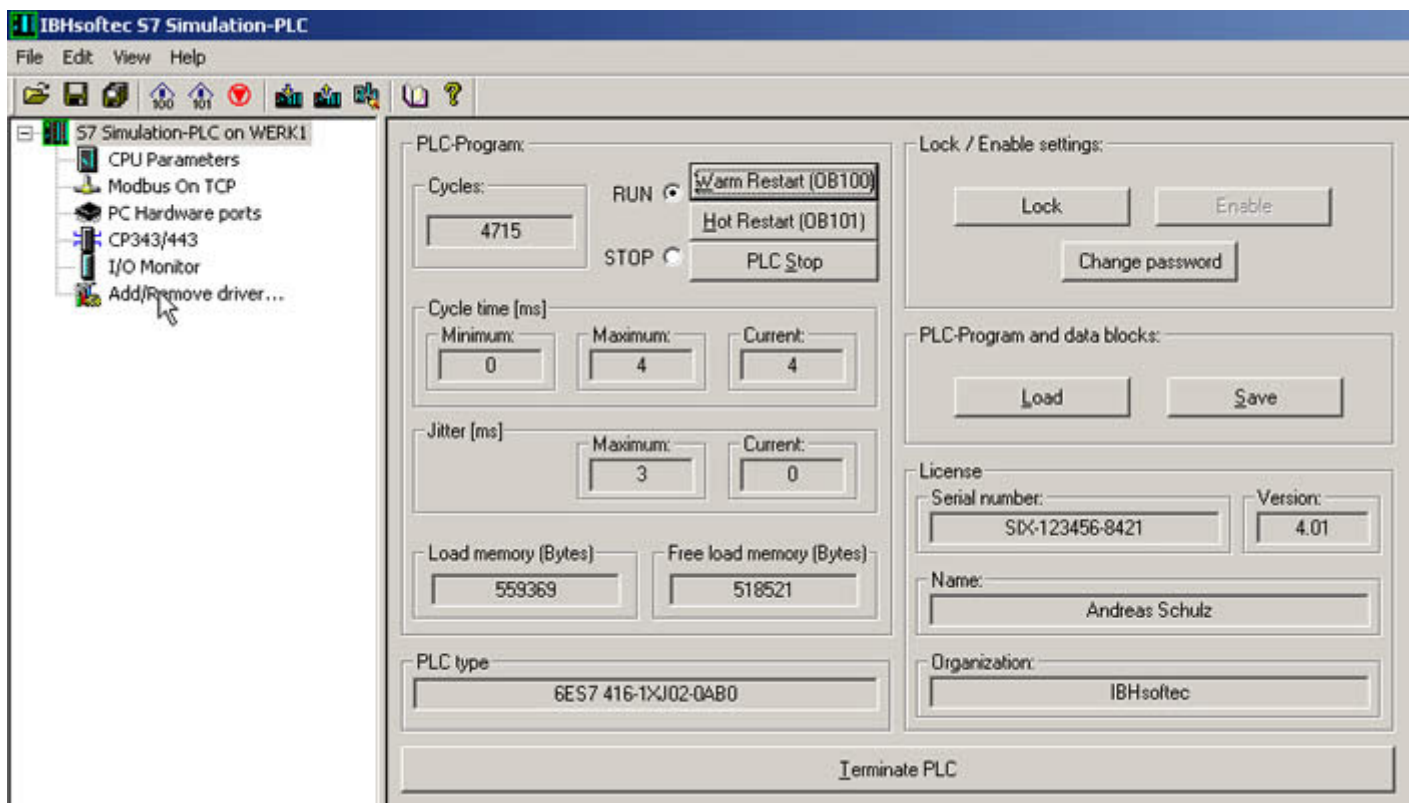


S7 Simulation PLC

The **S7 Simulation PLC** executes a program in the same manner as a hardware PLC. The advantage of executing a PLC program this way is, that the PLC status can be displayed in real time without any recompile activities. Since the Soft PLC behaves like a original SIMATIC® PLC, the programming tools **S7 for Windows®** and STEP®7 can be used. Online connections can be established serial, via Ethernet and directly on the same PC. Even for project engineering **S7 for Windows®** or the original STEP®7 tool can be used. The program of a S7-PLC or a Siemens Win AC® SoftPLC can be transferred to the **S7 Simulation PLC**.



The communication between the **Simulation S7** and **S7 for Windows®** or STEP®7 can be done directly, via TCP IP or with a zero- modem cable.

