

Echoroute – Internet Modem Access-Router

Remote Access – access production data whenever and from wherever you want. Data is continuously available: reaction to problems can be immediate; your production is maintained.

Usually ISDN Routers are used to connect different Ethernet networks via WAN (Telephone, Internet).

If ISDN is not available or could only be installed at great expense, you can use a Router with PSTN Network Compatibility.

Echoroute is such a Router.



echoroute

Technical Data

Protocols

- PPP
- Static IP Routing
- NAT (post Routing)
- DHCP-Client

Security Features

- Login / Password Protection
- PAP
- CHAP
- MS CHAP
- Call-Back
- Firewall

Physical Interfaces

- Ethernet LAN connection: 1 x RJ45, 10/100 Mbps
- 1 x RJ45, for analog connection (cable included in delivery)
- 1 x RS232 (for local/serial configuration)

Power Supply

- 24 V DC, ca. 1,1 A

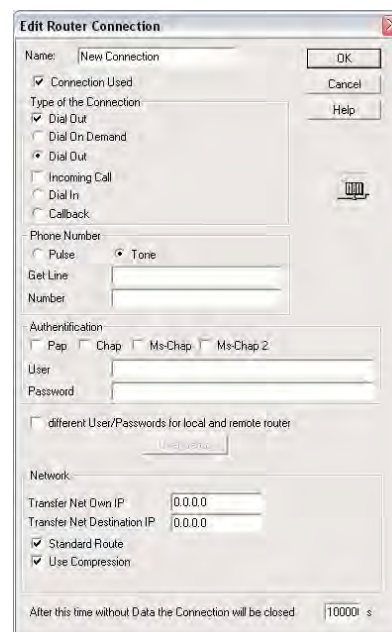
Dimensions [in mm]

- 76 x 120 x 120

Order Data

Echoroute, Analog Router, includes:
1 x Telephone Cable, RJ45–RJ11, 5m
1 x Adapter RJ11–TAE-F

Product:	Order No.:	Price:
echoroute	900-6900-01	€ 784.-
Connector Power Pack		
Model UK / USA	700-5596-02/03	€ 50.-

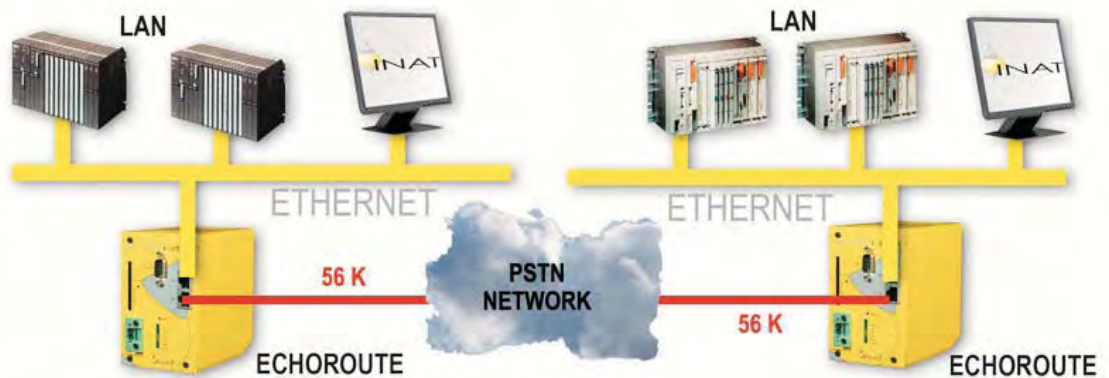


Easy configuration of the Analog Router

Applications:

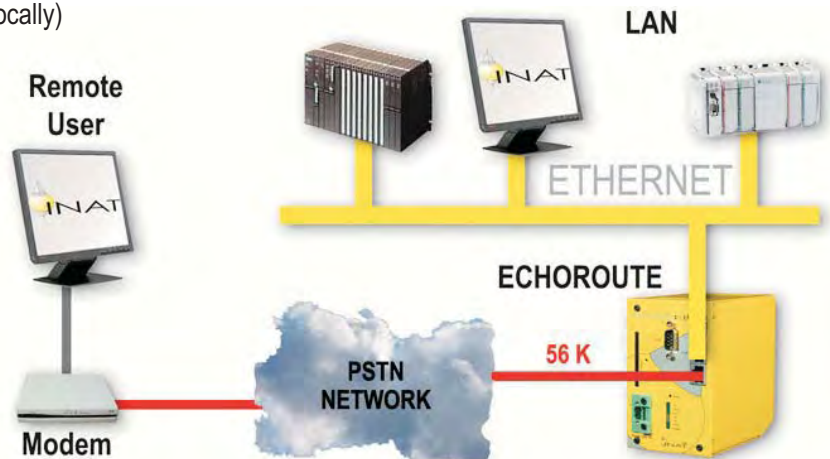
PSTN LAN to LAN Router

- Data transfer between Ethernet LANs via PSTN
- Secure LAN to LAN connectivity e.g. remote maintenance of PLCs



Remote Access

- Direct coupling between LAN and remote User via Modem/Router connection e.g. for programming (programming software runs locally)



Internet Access

- The classical application: enables multiple users to access the Internet
- Connect to the Internet at 56K using Point-to-Point Protocol (PPP)

