

NetSpector

Ethernet protocol analysis
in switched PLC- und
PC networks

**Network analysis in switched Ethernet.
Implementing and professional control of networks with remote agent solution.**

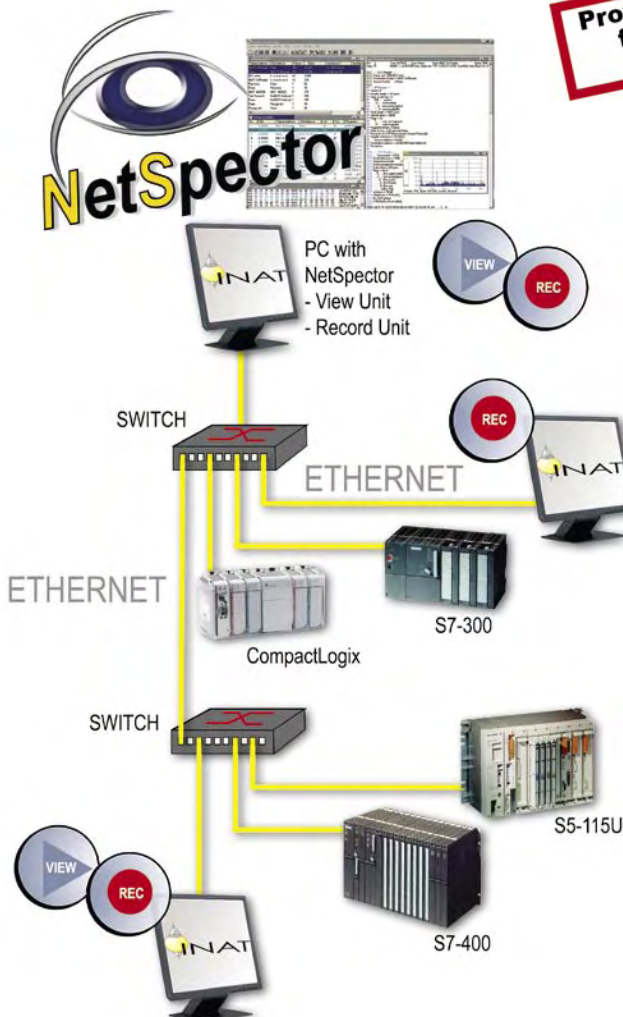
AREA OF APPLICATION

- Analysis of switched networks with modular modules: Record unit and View unit can be used autonomously
- Analysis of data traffic in 10 / 100 / 1.000 Mbps LANs
- Comprehensive search functions for quick locating of specific frame samples
- Frame details are presented in HEX and ASCII from layer 2 up to layer 7
- Filter functions for specific analysis of certain stations and frame types e.g. filter for IPAddresses and ports
- Decodes TCP/IP, ISO (H1), ISO on TCP (RFC1006), S7 Protocol, S5-AP, Modbus and EtherNet/IP etc.
- Trigger functions for analysis of recurrent errors
- Easy licensing with license confirm code, optional hardware lock (dongle)

**Protocol Analyzer
for switched
Ethernet**

NetSpector Features

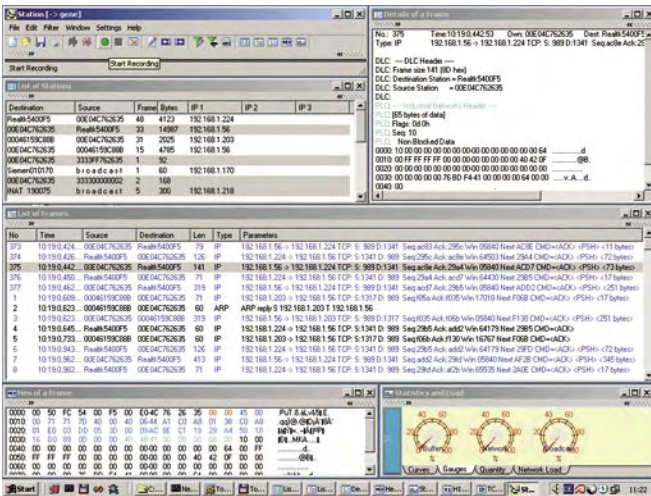
Software solution for Windows PCs
System requirements: Pentium II, 128 MB RAM,
1 GB hard disc capacity, standard Ethernet adapter



Transport protocols:	TCP/IP, ISO on TCP (RFC1006), TCP/IP with PLC Header, ISO (H1)
Applikations protocols:	S7 Protocol, S5-AP, Modbus on TCP, EtherNet/IP, Send / Receive, IPV4, IPV6, VLAN, PPPoE, ARP, RARP, ICMP, SNMP, NETBEUI, NetBIOS (TCP), DNS, BOOTP
Operating systems:	Windows 2000 / XP / 2003

Network analysis in switched networks with INAT NetSpector



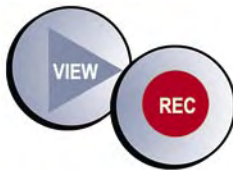


Detailed information such as protocol window

		Order numbers:
NetSpector Single user license, Software Confirm Code:	Record and View Unit run on the same PC in parallel	100-2265-01
NetSpector Single user license, Dongle:	Record and View Unit run on the same PC in parallel	100-2265-02
NetSpector Network license, Software Confirm Code:	Including 1 x View License (Software Confirm Code) Including 5 x Record License for Windows and Linux (Software Confirm Code)	100-2268-01
NetSpector Network license, Dongle:	Including 1 x View License (Dongle) Including 5 x Record License for Windows and Linux (Software Confirm Code)	100-2268-02
NetSpector Suite:	Including 10 x View License (Dongle) Including 100 x Record License for Windows and Linux (Software Confirm Code)	100-2268-08

Add-on modules for NetSpector network license

- Viewer License modules can only be used with existing network license



NetSpector Add-on modules

		Order numbers:
1 x View License with Software Confirm Code		100-2268-03
1 x Viewer License with Dongle		100-2268-04
1 x Record License		100-2268-05
50 x Record License		100-2268-06
100 x Record License		100-2268-07

