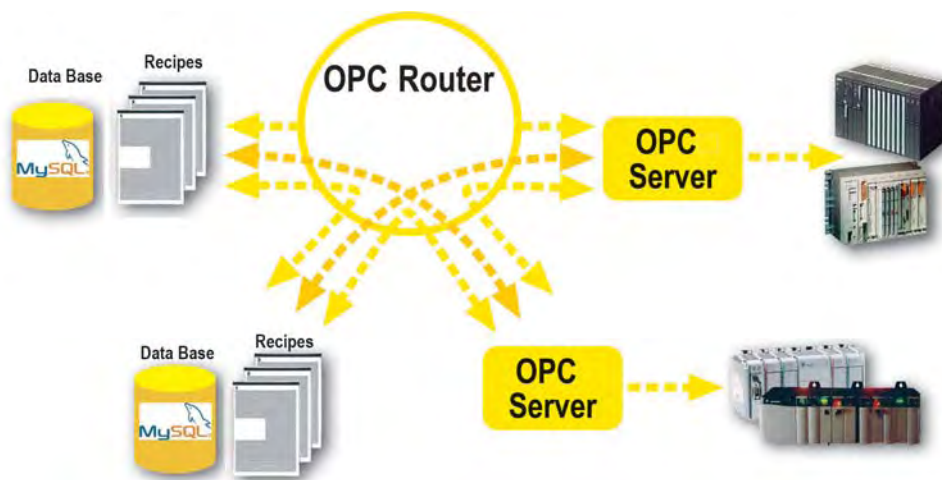


## OPC Router

Connects OPC Servers among each other and with data bases

Since most of today's visualization systems offer OPC interfaces which process the data of any OPC server, OPC is often presented as a software bus. This means that various communication partners connect to a common medium to exchange data.

This model does not work for communication of OPC servers among themselves since the current widely used OPC DA standard does not include this. However, actual practice frequently shows that it is necessary to exchange data between automation components.



### Features

- OPC coupling between PLCs and data bases as well as between PLCs and PLCs
- Complete OPC support
- Event controlled data transfer via trigger: timer trigger, asynchronous trigger, bit trigger, VB script
- Data traffic only has to be projected (NOT programmed)
- Compatibility to the OPC servers available on the market
- Supported data bases: Oracle, MySQL, MS SQL, Access, all data bases with ADO driver
- Diagnosis of connections via Internet / Intranet in the form of dynamic HTML sites
- VB script interface for user-defined transmission events and add-on

### Applications

- 1. OPC Server ↔ OPC Server**
  - Data transfer between OPC servers enables data exchange between automation components
- 2. Data base ↔ Data base**
  - Creation of temporary data e.g. recipes
  - Data Archiving as backup
- 3. Data base ↔ OPC**
  - Complex control tasks
  - Transfer of machine parameters, product parameters and recipe data is triggered by selected events
- 4. OPC ↔ Data base**
  - Reasonable with product tracing, tracking and production data acquisition

# Software und Treiber

Software and Drivers

Software und Treiber

Software and Drivers

Software und Treiber

www.inat.de

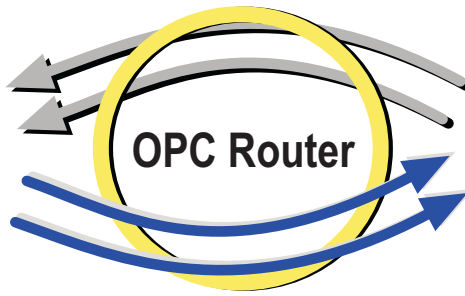
## Treiber

### SAP Add on

- The SAP Add on enables OPC coupling between PLCs and SAP / R3
- Measurement data logging and operating data logging
  - Production orders
  - Bill of materials etc.
- Standardised BAPI interface (Business Application Programming Interface) enables access to SAP data base
- Event controlled data traffic via trigger
- Connect the complete SAP System with PLCs
  - Real-time availability of operating data
  - Optimal work flow
- Diagnosis of connections via Internet / Intranet in the form of dynamic HTML sites
- VB Script interface for user-defined transmission events and odd-on



**S  
A  
P**

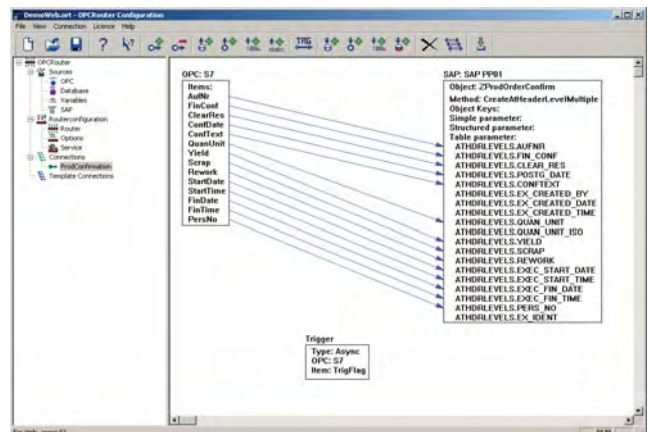


**O  
P  
C**



### Order Data

Product:	Order Number:	Price:
OPC Router	500-8000-01	€ 1.500,-
SAP Add-on	500-8000-02	€ 3.000,-



Add-on module OPC Router (SAP)