

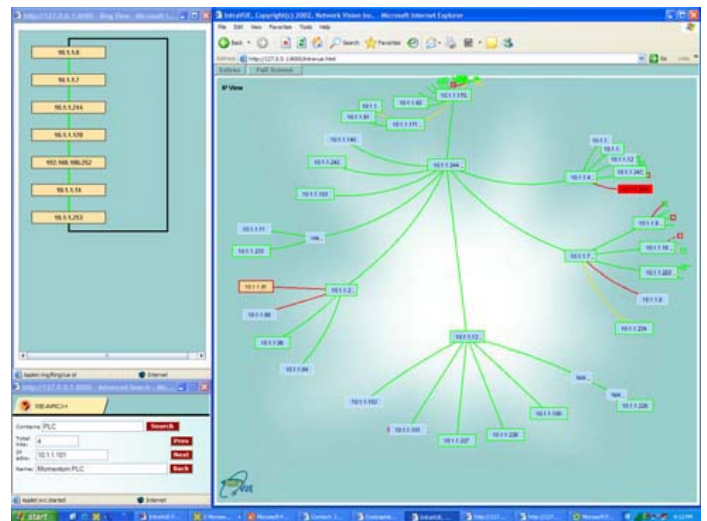


IntraVUE Version 1.7 Web-Server Edition

Expanding of the current capabilities while continuing with a focus on ease of use, Version 1.7 now provides users with enhanced capabilities. These new capabilities are representative of Network Vision's attention to customer requirements and goal to continuously improve our offering.

Ring Topology Views

IntraVUE provides a true and accurate presentation of communication paths regardless of the topology used (Star, Ring or Bus). The ability to isolate only the switches that are set up in a ring and allowing the back-up link to be displayed provides an additional simplification to those only interested in the devices making up the ring. IntraVUE now provides a selector that can bring up windows in which different rings can be monitored. Selecting any switch in the ring will center the corresponding switch in the main IntraVUE screen.



Advanced Search function

Searching for a device has become even easier now with the advanced search you can input a name or partial name and IntraVUE will list all devices that contain the inputted field.

Advanced Diagnostic View

You can now customize and enhance the diagnostic information displayed in the IntraVUE graphic. With the Advanced Diagnostic View you can choose any SNMP MIB data to be monitored by IntraVUE. The data which can be static or dynamic variables will be continuously monitored and displayed in a single pop-up window.

Individual Threshold settings

The ability to set individual link alarm levels now provides the flexibility to adjust your alarming to match each connection. Wireless, Radio Modem, Fiber, and long copper connections may respond differently and alarm level need to be adjusted appropriately. Version 1.7 now provides you the ability to set individual thresholds to match your specific requirements.

Improved Documentation

IntraVUE 1.7 now has improved the Import/Export function by expanding the output to include additional details of each device plus the uplink connection with port number. This allows an automatic inventory of all IP addressable devices and the associated port it is connected to.

Improved HMI integration

Version 1.7 will integrate the optional products of IVserver and Trap Mailer and create a structure to allow sharing of customizable data with any HMI or SCADA software package. This new version will provide advanced users with the ability to configure the polling of SNMP data that can easily be integrated to animate HMI graphics or to trigger alarm messages.



Version 1.7 of IntraVUE-Xscv Portable Field Engineering Version

Tailored for Start-up / commissioning or Field technicians the IntraVUE-**Portable IP Device Support Software** is a package that is affordable and very easy to deploy. Set-up is as easy as putting in the IP ranges and the Read community of the managed devices.

Automatic device discovery & Mapping

IntraVUE provides a true and accurate presentation of communication paths regardless of the structure of the networks. The automatic discovery can be local to a single LAN or discover multiple network separated by routers. The Mapping and navigational features are very unique and provide a level of simplicity rarely seen in any Ethernet support software. Color coding provides quick viewing of network problems such as intermittent communications and bandwidth problems. Within minutes of deploying the software a support technician has more real time information than can be retrieved from static drawings or analytical / sniffer tools.

System-wide event logging

The Event log can provide a wealth of information with regards to "Cause & Effect", time based disruptions, or intermittent failures. Filtering and individual event logging allows technicians to zero in on a specific device or type of problem. Problems such as disconnects that may be caused by connector or wiring problems are highlighted in minutes of scanning a network. This can save hours of wasted effort that is typical when using sniffers to try and determine the location of these types of faults.

Network Snapshots and Off-line analysis

IntraVUE provides you the ability to capture at any instant the current activities and conditions of a network. Sometimes it is easier to take a picture and analyze the problem off-line when you have time to thoroughly review. You may also want to take a snapshot before adding devices to avoid any potential problems created by overloading an area that is close to maximum. Installers and commissioning Engineers will find this feature invaluable and eliminate potential outages when adding devices to an operating network.

Access to Web based device interfaces

Enhanced SCV provides individuals with the capability to configure and manage devices through their web based interface. Almost all new IP addressable devices allow configuration and management from an embedded web page. The enhanced SCV automatically detects which devices have this capability and provides a single button to open up the service.

Easy Export for hard copy reports

IntraVUE provides a mechanism to export the discovered network into a spreadsheet in minutes. This information contains accurate connection information that can save hours if not days of manual inspection and data input. Field technicians can perform asset analysis or system verification checks to keep networks in compliance to system specifications. This features saves thousands of dollars and improves overall accuracy of system documentation.



IntraVUE Version 1.7

Selection Guide

IntraVUE has been developed and componentized to provide tailoring to meet the specific requirements and cost constraints of several application areas. From a low cost software package that can be loaded on a laptop to quickly map and pinpoint a potential communication problem to software that can be integrated into HMI/SCADA applications integrating network alarms with process alarms, IntraVUE is scalable, flexible, and very cost effective. Simplified for general electricians not familiar with networking to Control Engineers / Manufacturing IT professionals that maintain the availability of real time Industrial Ethernet networks, there is a version of IntraVUE that fits your requirements.

Web Server Version – 24 x 7 monitoring, alarming and fault recovery

The IntraVUE Web-Server is the premier version in which all functionality is integrated into a package that is intended to monitor activities 24 x 7. The dedicated application then allows additional features such as individual settable thresholds, ring topology views and interfaces to extended SNMP data. The software is constructed to run stand alone or be integrated into most HMI / SCADA software applications. The version is intended to provide a framework in which applications such as Auto-IP and Trap mailer further enhance the solution set. The software is designed to provide continuous real time information of network performance to be transmitted to other computers and operator stations.

Capabilities Provided in Selected IntraVUE Package Offerings													
	Max # of devices	Auto-Discovery	Auto-Mapping	Event Logging	Back-up Utility	Links to Device Web Interfaces	Import / Export Documentation	Custom SNMP Diagnostics	Ring View	Individual Thresholds	HMI / SCADA integration capability	Advanced search	Remote Viewing
Web-Server Edition	1024	X	X	X	X	X	X	X	X	X	X	X	X
Enhanced SCV Edition	512	X	X	X	X	X	Optional adder						
Basic SCV Edition	512	X	X	X	X		Optional adder						

Basic Single Client – developed for Field technicians deploying IP Devices

An entry level version that contains the core Auto-Discovery and mapping features along with integrated Event Log of the Premier Server Version. Tailored for application needs of field technicians and commissioning engineers the software can be enhanced with a documentation package that allow export of device details including the port of the switch it is located on.

Enhanced Single Client – Commissioning IP devices and Ethernet switches

Further enhancing the field technicians tool the added ability to automatically discover if a device has a web service and then create a short cut to the devices web page. This enhanced feature allows technicians to expand their capability to easily link to the web configuration and diagnostic information of different vendors creating a framework for advanced support. Links can also be created to allow documentation and operating procedures to be linked via the technicians laptop.

Yearly subscription & support service contract:

Network Vision highly recommends that every software package be sold with a yearly support contract. The software is evolving as users become more familiar and unique features are added. This area of the Industrial Automation market is changing rapidly and network Vision is working in partnership with many suppliers to provide the simplest and most functional support software available.

Having the support contract can save thousands of dollars and hours of time in support of your network. In addition the support contract will provide significant savings with the upkeep of your software as your application grows.

The following table outlines the benefits of having a support contract with Network Vision.

	w/ Service Contract	w/o Service Contract
Major Version Upgrades	Free	Not Available - unless user pays for the uncovered time plus a year forward
Upgrade to larger size package or adding additional options	Cost difference between original purchase price and larger version price.	\$250 plus the cost difference between original purchase price and larger version price.
Technical support	Telephone, WebEX and email support	Email support
Transfer of license to new computer	Free (max of 4 moves)	\$250 per transfer (max of 2 moves)
On-Site training	\$900 /day plus expenses	\$1,200 / Day plus expenses