

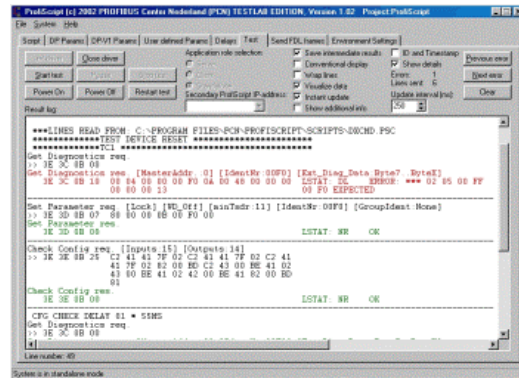
ProfiScript + Proficore Ultra (ref 33020)



Introduction

ProfiScript is a low cost professional PROFIBUS pre-certification tool that can test and verify the complete protocol

functionality of DP, DP-V1 and PA devices. It has enormous flexibility and is very easy to use. At this moment it is the only tool available, which can power-up/down devices by an external intelligent power switch and has the capability of remote testing over the Internet. An implemented syntax interpreter can also test the GSD file.



Application areas

- ▶ Product certification (Real Testlab Tool)
- ▶ Pre-conformance testing
- ▶ Product development
- ▶ Test-system for production verification

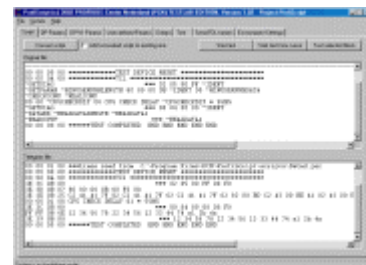
This is the tool that will save you time and money during your PROFIBUS development and pre-certification phase, because we are also using this tool in our testlab!

Software Features

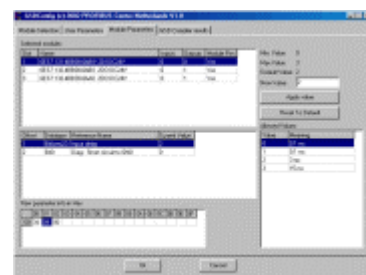
- ▶ Works on PCs/PGs and Laptops with a communication processor attached to the USB port (ProfiCore).
- ▶ Supported operating systems: **Win98(SE)**, **Win2000**, **WinXP**.
- ▶ Language: **English**.

Script details

- ▶ Pre-built scripts for DP and DP-V1 (including the complete test cases according to IEC 61158).
- ▶ Quick and easy iteration of a testscript (including user commands).
- ▶ Backward compatible with the old Siemens based test scripts.
- ▶ Selectable timestamping, details and framecount.
- ▶ Partial test (only a specified portion of the testcase).
- ▶ Dynamically settable delays of individual messages.



Easy script building



Easy GSD file setup



▶ **GSD file interpreter**

- ▶ Visual configuration of the script settings by an internal GSD interpreter.
- ▶ Automatic setup of the slave settings for a test.
- ▶ Checking for common errors.
- ▶ Direct visibility of the parameter and configuration data in hex codes.



▶ **Easy DP and test setup**

Others

- ▶ Manual sending of individual DP messages (*SetParameters, SetSlaveAddress, GetDiagnostics, etc.*).
- ▶ Save/Export results in RTF format.
- ▶ Integrated help functions.
- ▶ Remote access by means of TCP/IP.
- ▶ Automatic power down/up of slaves with the **Intelligent Power Switch** (option).

Hardware Features

ProfiCore

- ▶ Full speed USB interface.
- ▶ PROFIBUS baudrate max. 12 Mbps.
- ▶ Galvanic isolated PROFIBUS Interface.
- ▶ Latest RS 485 technology.
- ▶ Trigger output port for oscilloscopes (message capturing).
- ▶ Communication processor can be used by other applications (master functionality or analyzer).



Power Switch

- ▶ Maximum switch voltage and current: 250V-3A.

