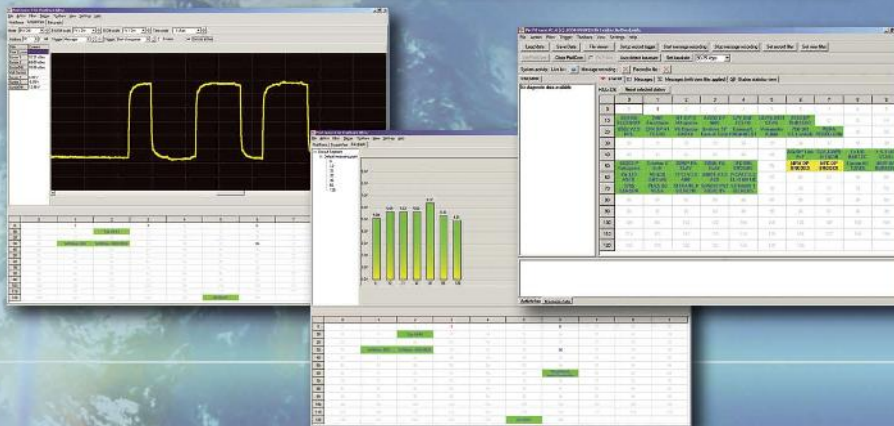


# ProfiTrace 2

## PROFIBUS All-in-One Tool



**The most complete tool ever!**

- Analyzer
- Oscilloscope
- Bar graph
- Topology scan
- Reporting
- DP Master

# PROCENTEC

[www.procentec.com/profitrace2](http://www.procentec.com/profitrace2)



# ProfiTrace 2

## The most complete tool ever!

### Introduction

ProfiTrace 2 is the most powerful analyzer for PROFIBUS networks. It is the latest generation in the line of busmonitor technology because it combines all primary tools in one: Analyzer, Oscilloscope, Bar graph, Topology Scan and DP-V0/V1 Master.

Technicians can check and troubleshoot the complete PROFIBUS network with 1 software package and 1 piece of hardware. This results in an enormous reduction in equipment, weight, costs and required knowledge. The advanced USB hardware [ProfiCore Ultra] is internally equipped with a high speed digital oscilloscope and able to capture bus signals running at 12 Mbps.



ProfiTrace is an essential tool for maintenance, commissioning and troubleshooting as well as product development. Typical failures such as noise, reflections, voltage drops, termination problems, double addresses, wire breaks and configuration faults are easily identified. Random errors such as overshoots, error telegrams, repeats and diagnostics can also be captured and logged. The results can also be exported to detailed reports which are accepted by the industry. Predictive maintenance and asset management are now really possible! This outstanding tool that fits in your pocket will boost the capabilities of service, maintenance and engineering technicians.

### Product features

- ✓ **Analyzer with powerful statistics**  
Repeats, Fall-outs, Corrupted messages, Diagnostics, Cycle time, etc.
- ✓ **High speed digital oscilloscope**  
Differential voltage, A-line, B-line, Noise, Overshoots, Reflections, Triggers.
- ✓ **Bar graphs**  
Average, Min. and Max. values of the bus signals per device.
- ✓ **Topology Scan**  
Automatic generation of the network topology.
- ✓ **Reporting**  
Automatic generation of detailed reports that are accepted by the industry.
- ✓ **DP-V0/V1 master**  
ProfiCaptain has been completely integrated with even more features.
- ✓ **ProfiCore Ultra USB interface**  
Useable on PC platforms, no power supply required and elimination of spur lines.
- ✓ **DP and PA**  
The PA Probe Ultra makes a measurement on PA segments possible (coming soon).
- ✓ **9,6 kbps to 12 Mbps.**
- ✓ **Works on XP and Vista platforms.**

## Analyzer features

### Intelligent real-time Live List

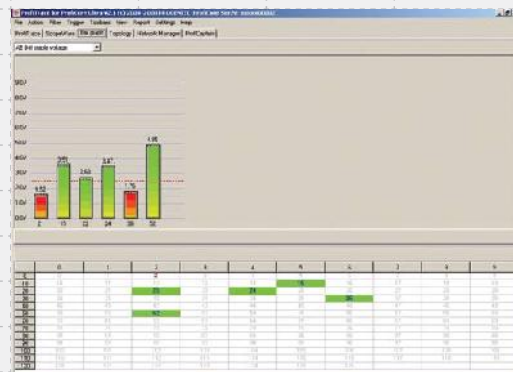
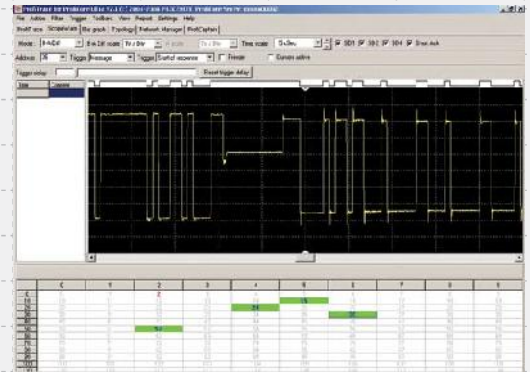
- Colourful representation of detected devices.
- Powerful statistics for every error: repeats, station lost, etc.
- Advice & warnings: Ident number mismatch, Watchdog not set, Illegal configuration.
- Last diagnostic, parameter, configuration and data-exchange message.
- GSD file management for product and diagnostic identification.

### Intelligent message sampler

- Visualization of FDL, DP, DP-V1, DP-V2, PA and I&M messages.
- Messages can be filtered and stored.
- Data interpretation of bytes, words, floating points, etc.
- Error detection.
- Bookmarks.

## ScopeWare features

- Time scale: 50 ns to 500 ms.
- Voltage scale: 0,5 to 5 V per DIV.
- Cursor measurement lines (voltage and time).
- Differential (B-A) and single ended (A and/or B line) measurements.
- Trigger per device or free running.
- Trigger features: start of response or request message.

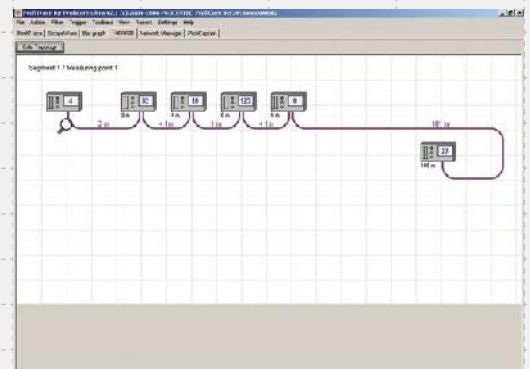


## Bar graph features

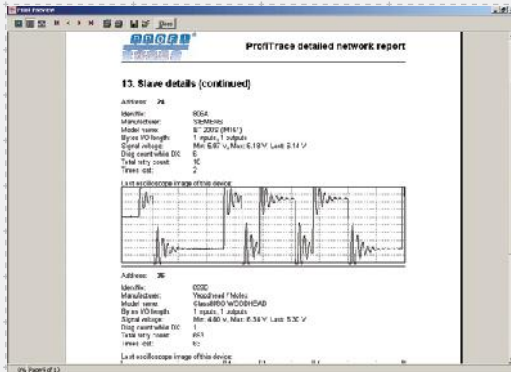
- 2 Selectable modes: Average signal level and minimum difference between 1 and 0.
- Current, Min. and Max. signal level indicator per device.
- Colours state the quality of the signals.
- Continuously updated.

## Topology scan features

- Automatic generation of the network topology.
- No shutdown required!
- No disturbance in the cycle time!
- Works on 500 kbps and 1,5 Mbps.
- On passive networks in conjunction with ProfiCaptain.





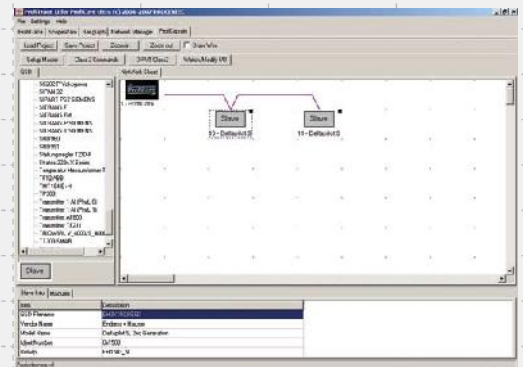


## Reporting features

- Generation of detailed network reports.
- Address list with manufacturer information.
- Oscilloscope images of every device.
- Live List, Bar graph and Topology structure.
- Summary of detected errors.
- Standard layout for signatures and approvals.

## Master features

- Complete integration of ProfiCaptain.
- Putting slaves in Data Exchange.
- I/O testing with automatic patterns.
- Automatic detection of existing busparameters.
- Brand new concept of 'stealing' slaves.
- Class 2 functions in a Class 1 framework.
- No shutdowns when updating the configuration.
- Deactivating slaves in the configuration.



## ProfiCore Ultra features

### PROFIBUS

- PROFIBUS baudrate max. 12 Mbps.
- Galvanic isolated PROFIBUS interface.
- Latest RS 485 technology.

### Oscilloscope

- Frequency: 2 x 192 MHz.
- Bandwidth: 100 MHz.
- Differential measurement: -9 to +9 V.
- Single ended: -4,5 to +8 V.

### Others

- High speed USB 2.0 interface.
- External power supply possible if required.



Your Distributor

>>> Distribucion: **ER-Soft, S.A.** [www.er-soft.com](http://www.er-soft.com) [info@er-soft.com](mailto:info@er-soft.com) Tel: +34 916-408-408 <<<

# PROCENTEC

[www.procentec.com/profitrace2](http://www.procentec.com/profitrace2)