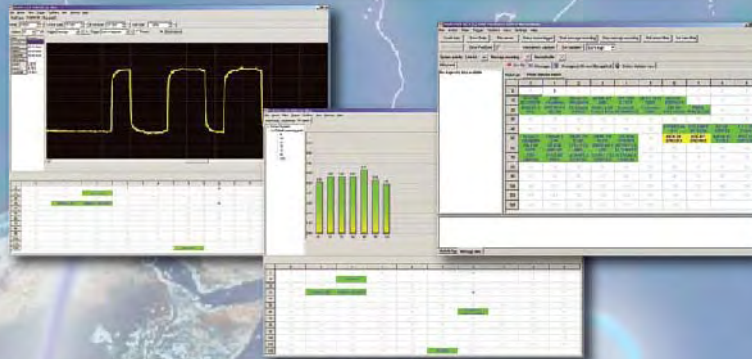


ProfiTrace 2

PROFIBUS Combi-Analyzer on USB



Introduction

ProfiTrace 2 is the most powerful analyzer for PROFIBUS networks. It is the latest generation in the line of busmonitor technology because it combines all primary tools to one: **Analyzer, Oscilloscope, Bar graph and DP-V0/V1 Master.**

The advanced USB hardware is equipped with a high speed digital oscilloscope and able to capture bus signals running at 12 Mbps.

ProfiTrace 2 is an essential tool for maintenance, commissioning and troubleshooting. The classical failures such as noise, reflections, voltage drops, termination problems, double addresses, wire breaks and configuration faults are easily identified. Random errors such as overshoots, error telegrams, repeats and diagnostics can also be captured and logged. The results can also be exported to detailed reports which are accepted by the industry. Predictive maintenance and asset management are now really possible!

This outstanding tool that fits in your pocket will boost the limits and capabilities of service, maintenance and engineering technicians.

Product features

- Analyzer with powerful statistics
- High speed digital oscilloscope
- Bar graphs
- Reporting
- DP-V0/V1 master
- ProfiCore Ultra USB interface
- DP and PA
- 9,6 kbps to 12 Mbps

PROCENDEC

www.procentec.com/profitrace2

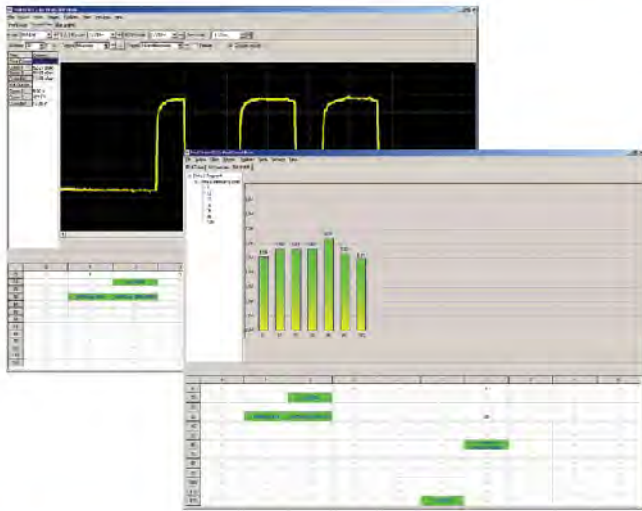
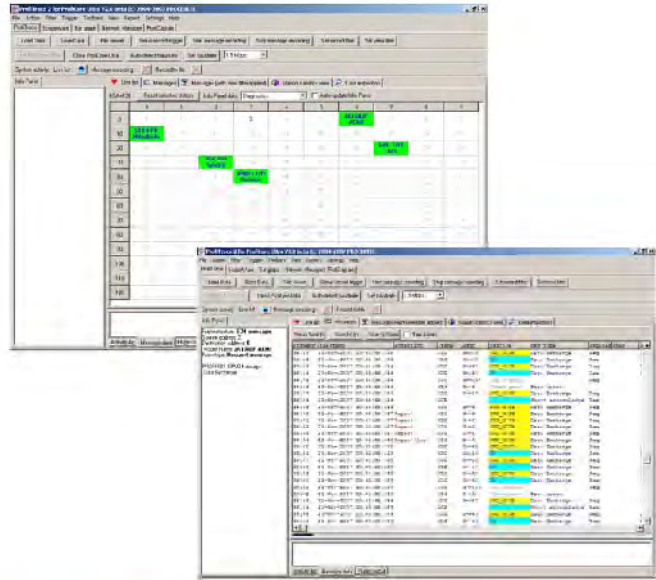
Analyzer features

Intelligent real-time Live List

- Colorful representation of detected devices.
- Powerful statistics for every error: repeats, station lost, etc.
- Advice & warnings: Ident number mismatch, Watchdog not set, Illegal configuration.
- Last diagnostic, parameter, configuration and data-exchange message.
- GSD file management for product and diagnostic identification.

Intelligent message sampler

- Visualization of FDL, DP, DP-V1, DP-V2, PA and I&M messages.
- Messages can be filtered and stored.
- Data interpretation of bytes, words, floating points, etc.
- Error detection.
- Bookmarks.



ScopeWare features

- Time scale: 50 ns to 500 ms.
- Voltage scale: 0,5 to 5 V per DIV.
- Cursor measurement lines (voltage and time).
- Differential (B-A) and single ended (A and/or B line) measurements.
- Free running or trigger per device.
- Trigger features: start of response or request message.

Bar graph features

- Average, Min. and Max. signal levels per device.
- Colour indicates the quality of the signal.
- Continuously updated.

Proficore Ultra Features

PROFIBUS

- PROFIBUS baudrate max. 12 Mbps.
- Galvanic isolated PROFIBUS Interface.
- Latest RS 485 technology.

Oscilloscope

- Frequency: 2 x 192 MHz.
- Bandwidth: 100 MHz.
- Differential measurement: -9 to +9 V.
- Single ended: -4,5 to +8 V.

Others

- High speed USB 2.0 interface.
- External power supply possible if required.



Your Distributor

PROCENDEC

www.procentec.com/profitrace2

