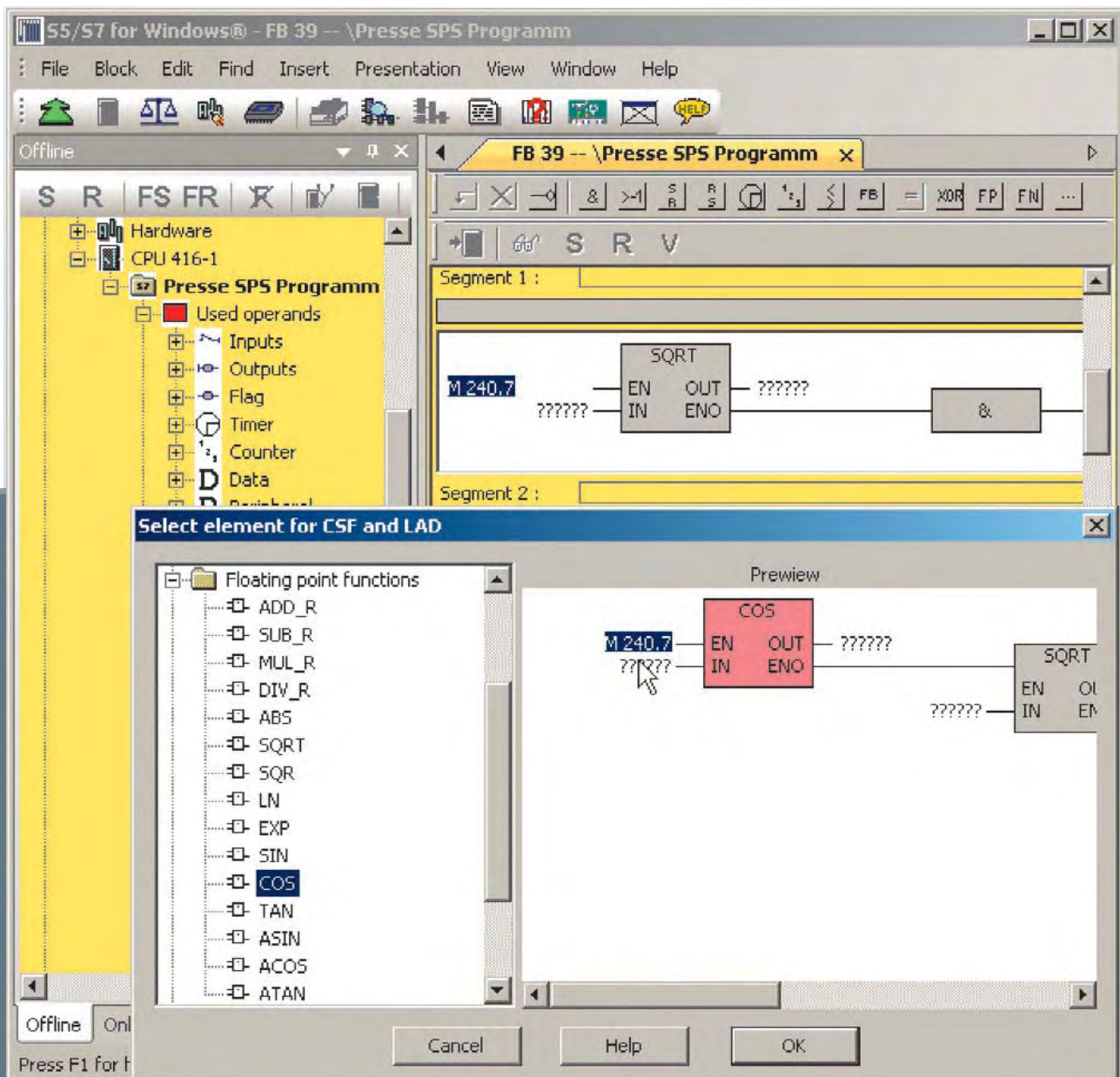


# S7 for Windows® Version 6

## Programming system for S7-PLC-controls

In order to program the Siemens PLC-control series® S7-300® and S7-400® efficiently and comfortably, IBHsoftec provides the software **S7 for Windows®**. This software can be combined with **S5 for Windows®** or runs stand alone. With **S7 for Windows®** the entire SIMATIC® S7-300® and S7-400® PLC-control series can be programmed. The complete S7 instruction set is implemented in the presentations Statement List (STL), Function Block Diagram (FBD) and Ladder Diagram (LAD).

Of course all online-functions are implemented. The new operational concept of version 6 has been developed on the basis of the latest cognitions in operator guidance. Block lists and symbolic tables for example can be arranged freely, they can be drawn in any order from the main window onto a second screen and can be faded out automatically from the main window, in order to gain more space on the screen. The presentation of the module parameters has been adjusted as well.



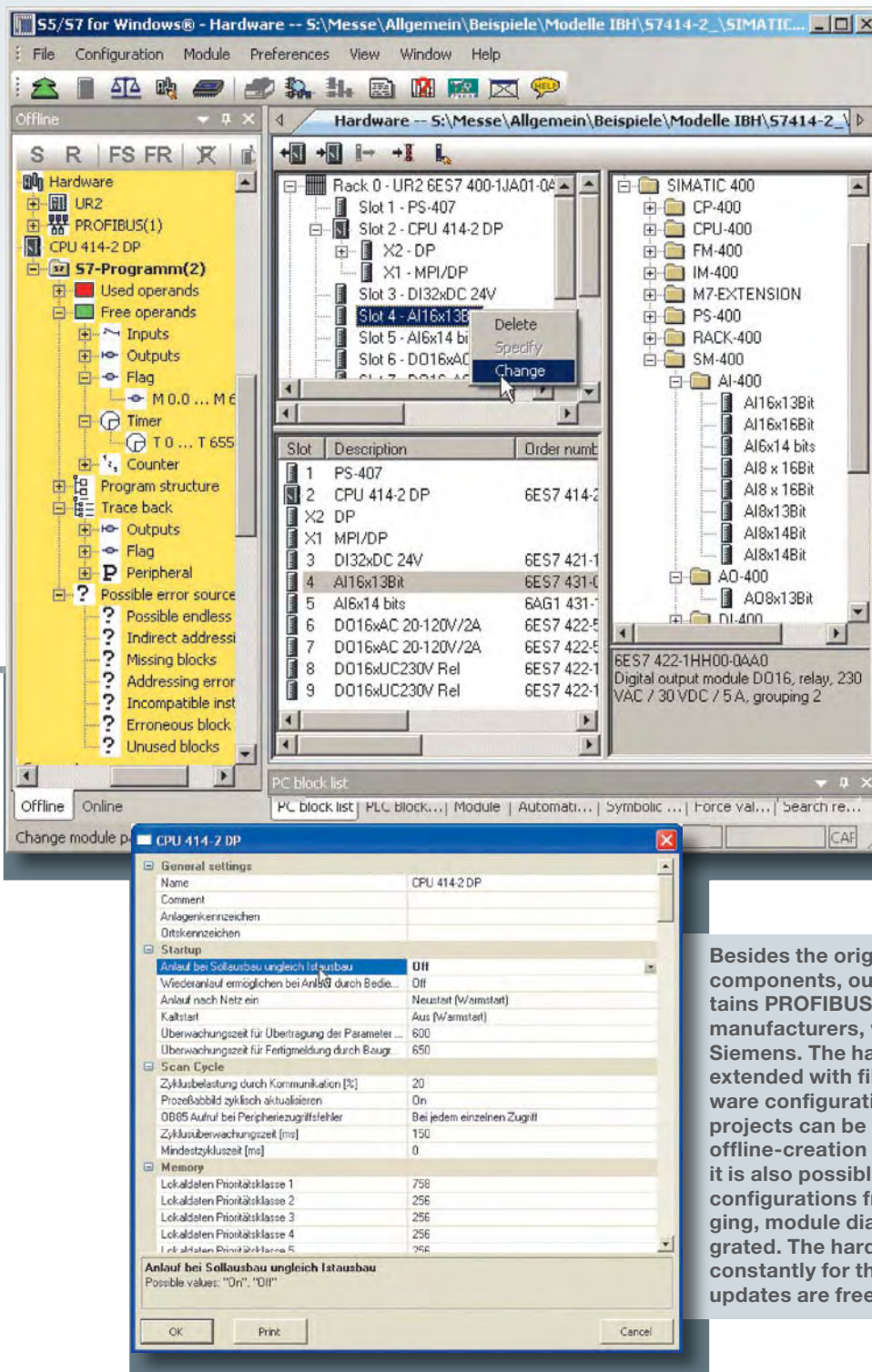


# S7 for Windows® Version 6

## Hardware configuration

The hardware configuration allows the parametrizing of modules, the allocation of addresses and the configuration of a PROFIBUS. By clicking on the module in the configuration, a dialogue opens,

which allows to setup the module parameters. In the detail window of the module or CPU, executed changes are marked clearly, in order to avoid unintentional changes before saving.



Besides the original Siemens PROFIBUS components, our hardware catalogue contains PROFIBUS components from other manufacturers, which are compatible to Siemens. The hardware catalogue can be extended with files in GSD-format. The hardware configuration of existing STEP®7 projects can be read and edited. Besides offline-creation of hardware configurations, it is also possible to read and edit existing configurations from a PLC. For quick debugging, module diagnostic functions are integrated. The hardware catalogue is updated constantly for the latest modules. These updates are freely available via internet.



# S7 for Windows® Version 6

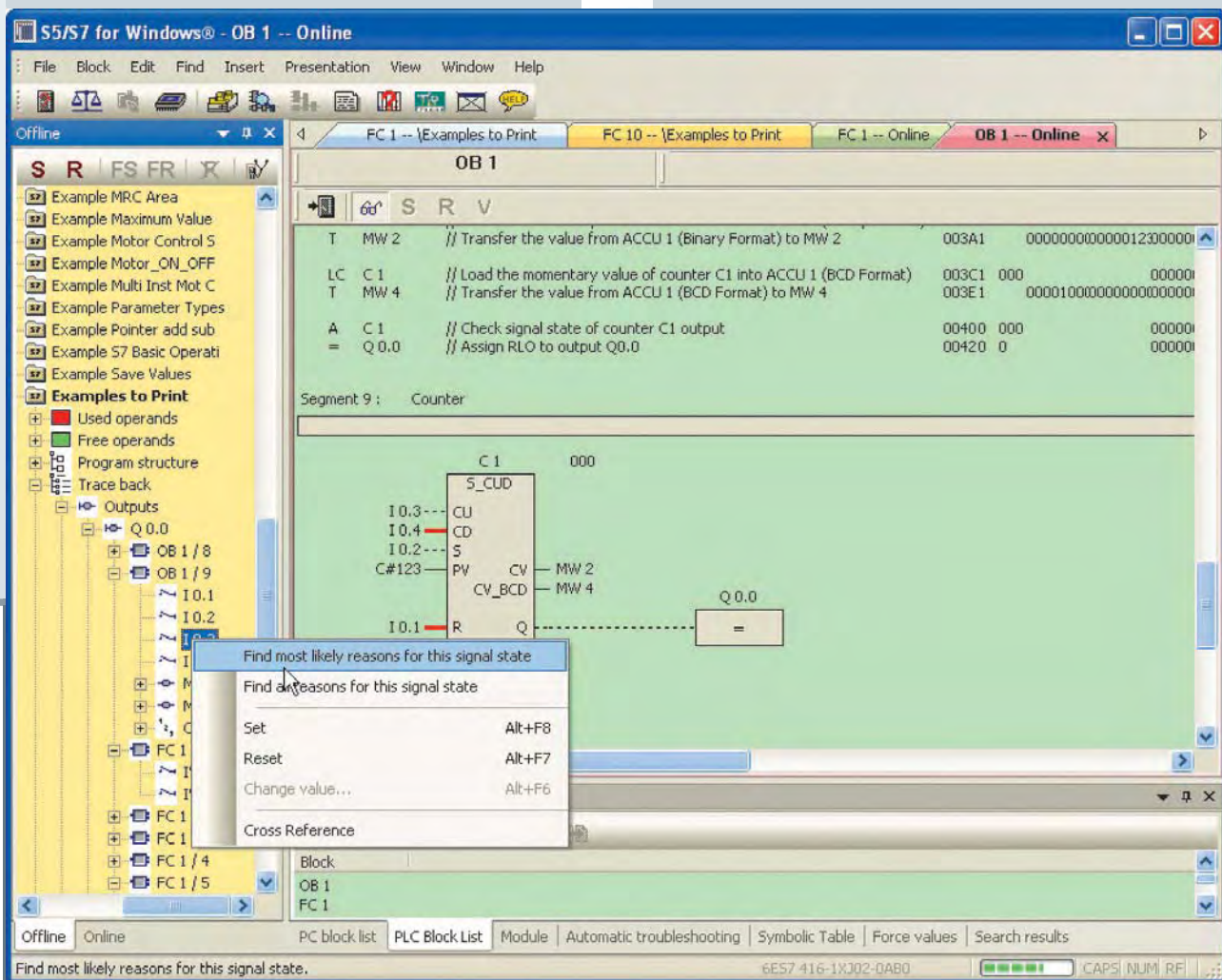
## Program test during online operations

With **S7 for Windows®** the entire S7 instruction set can be shown in the representation STL (Statement List) in status view. The status operation is also possible in the representations Function Block Diagram (FBD) and Ladder Diagram (LAD). Furthermore variable views and symbolic tables are integrated in the status window. All installed interfaces capable of connecting to a PLC are displayed in the online view.

during debugging and returns the reason for the stop in plain text. In contrast to conventional diagnostic tools, no special adaptation of the PLC program is necessary.

## Other improvements

All STEP®7-projects can be edited directly without im-/export. Archived STEP®7-projects can be opened directly. All write accesses on the PLC can



## Integrated S7-Simulation, BlockDiff and S7 Doctor

Version 6 contains **S7-Simulation** and the comfortable block comparison (**BlockDiff**). The functions of **S7 Doctor** for automated troubleshooting are integrated as well. The **S7 for Windows®** allows a fully automated debugging in the running PLC program. Compared to the classical debugging the **S7 for Windows®** performs all the tasks required

be prevented with a password protection. Signals (operands) traceability is possible. Cross-reference over complete IO modules and hardware or module diagnostics is also possible. The print preview and the forcing of operands are implemented as well. The conversion from S5- to S7-programs has been optimized. Saving of complete S7-projects on a memory-card is also possible (CPU dependent).