

# WorkSuite Package

For Brodersen RTU32 Series

## Quick Installation Guide

Version 1.08 / December 2015 / Doc 40334





## Table of Content

1.	Customer Information .....	3
1.1	Copyright Notice .....	3
1.2	Trademark Acknowledgement .....	3
1.3	Disclaimer .....	3
1.4	Life Support Policy .....	3
1.5	Brodersen Customer Services .....	3
1.5.1	Technical Support .....	3
1.6	Hardware Product Warranty .....	4
1.7	Software Limited Warranty .....	4
2	Introduction to the Brodersen WorkSuite Package .....	5
2.1	Package details .....	5
2.2	WorkSuite License .....	5
2.3	Compatibility with STRATON WorkBench .....	5
2.4	User documentation and training/guideline videos .....	5
3	Installation .....	7
3.1	System Requirements .....	7
3.2	Installation process .....	7
3.3	Install your license key code .....	11
4	RTU32 Utilities and System Event Log .....	13
4.1	General .....	13
4.2	RTU32 Software Bulk Update Tool .....	13
4.3	RTU32 Search Tool .....	13
5	History .....	14



## 1. Customer Information

### 1.1 Copyright Notice

Copyright 2014, Brodersen A/S, ALL RIGHTS RESERVED.

No part of this document may be reproduced, copied, translated, or transmitted in any form or by any means, electronic or mechanical, for any purpose, without the prior written permission of the original manufacturer.

### 1.2 Trademark Acknowledgement

Brand and product names are trademarks or registered trademarks of their respective owners.

### 1.3 Disclaimer

Brodersen A/S reserves the right to make changes, without notice, to any product, including circuits and/or software described or contained in this manual in order to improve design and/or performance. Brodersen A/S assumes no responsibility or liabilities for the use of the described product(s), conveys no license or title under any patent, copyright, or mask work rights to these products, and makes no representations or warranties that these products are free from patent, copyright, or mask work right infringement, unless otherwise specified. Applications that are described in this manual are for illustration purposes only.

Brodersen A/S makes no representation or warranty that such application will be suitable for the specified use without further testing or modification.

### 1.4 Life Support Policy

BRODERSEN A/S's PRODUCTS ARE NOT FOR USE AS CRITICAL COMPONENTS, IN LIFE SUPPORT DEVICES OR SYSTEMS WITHOUT THE PRIOR WRITTEN APPROVAL OF BRODERSEN A/S.

As used herein:

1. Life support devices or systems are devices or systems which, (a) are intended for surgical implant into body, or (b) support or sustain life and whose failure to perform, when properly used in accordance with instructions for use provided in the labeling, can be reasonably expected to result in significant injury to the user.
2. A critical component is any component of a life support device or system whose failure to perform can be reasonably expected to cause the failure of the life support device or system, or to affect its safety or effectiveness.

### 1.5 Brodersen Customer Services

Your satisfaction is our primary concern. Here is a guide to Brodersen customer services. To ensure you get the full benefit of our services, please follow the instructions below carefully.

#### 1.5.1 Technical Support

We want you to get the maximum performance from your products. So if you run into technical difficulties, we are here to help. For the most frequently asked questions, you can easily find answers in the product documentation. These answers are normally a lot more detailed than the ones we can give over the phone. So please consult this manual our training videos at YouTube first.

To receive the latest version of the user manual, please visit our Web site at: <http://www.brodersen.com>,

Choose the product in question under product search and under each product you will find accompanying data sheets, manuals, user guides etc.

To find our YouTube videos, please go to YouTube.com and search for BrodersenSystems.

If you still cannot find the answer, gather all the information or questions that apply to your problem, and with the product close at hand, call your dealer. Our distributors are well trained and ready to give you the support you need to get the most from your Brodersen products. In fact, most problems reported are minor and are able to be easily solved over the phone.

In addition, technical support is available from Brodersen engineers every business day. We are always ready to give advice on application requirements or specific information on the installation and operation of any of our products. Please do not hesitate to call or e-mail us on [support@brodersen.com](mailto:support@brodersen.com).

Denmark:

Brodersen A/S

Islevdalvej 187

DK-2610 Roedovre

Tel.: +45 45 35 26 27

Fax: +45 45 35 26 29

[sales@brodersen.com](mailto:sales@brodersen.com)



[www.brodersen.com](http://www.brodersen.com)

### 1.6 Hardware Product Warranty

Brodersen warrants to you, the original purchaser, that each of its products will be free from defects in materials and workmanship for two years from the date of purchase.

This warranty does not apply to any products which have been repaired or altered by persons other than repair personnel authorized by Brodersen, or which have been subject to misuse, abuse, accident or improper installation. Brodersen assumes no liability under the terms of this warranty as a consequence of such events. Because of Brodersen's high quality control standards and rigorous testing, most of our customers never need to use our repair service. If a Brodersen product is defective, it will be repaired or replaced at no charge during the warranty period. For out-of-warranty repairs, you will be billed according to the cost of replacement materials, service time, and freight. Please consult your distributor for more details. If you think you have a defective product, follow these steps:

1. Collect all the information about the problem encountered. (For example, Product type and s/n, hardware and software version etc.) Note anything abnormal and describe the error in a product failure report.
2. Call your distributor and describe the problem. Please have your manual, product, and any helpful information readily available.
3. If your product is diagnosed as defective, make arrangement with your distributor about this.
4. Carefully pack the defective product, a complete failure report and a photocopy of proof of purchase date (such as your sales receipt) in a shippable container. A product returned without proof of the purchase date is not eligible for warranty service.
5. Ship it to your distributor.

### 1.7 Software Limited Warranty

Brodersen does not warrant that the Software will be error free, that it will satisfy your planned applications or that all defects in the Software can be corrected. If Brodersen provides information or assistance regarding the use of the Software or otherwise, Brodersen is not assuming the role of application engineering consultant. Brodersen disclaims responsibility for any errors or omissions arising in connection with engineering in which its Software or such information or assistance is used.

In no event shall Brodersen be liable for incidental or consequential damages, including lost profit, lost savings, lost opportunities, or other incidental or consequential damages arising out of the use or inability to use the licensed software, even if Brodersen has been advised of the possibility of such damages.



## 2 Introduction to the Brodersen WorkSuite Package

### 2.1 Package details

The Brodersen WorkSuite Package includes all software required to configure and program Brodersen RTU32 Series of products currently covering RTU32, RTU32R, RTU32S and RTU32E.

The software components included in the package includes:

- Brodersen WorkSuite PLC configuration and programming tool<sup>1)</sup>.
- WIBUKey driver for the USB license key dongle for WorkSuite.
- RTU32 Series tool package including;
  - o EventViewer – the telnet tool used for monitoring the SystemLog(s) in RTU32 Series products.
  - o RTU32 Search tool for scanning and finding RTU32 products running on networks.
  - o RTU32 Series Remote Desktop tool
  - o RTU32 Update tool for managing software updates for many RTUs over network connections.

All software is installed in one installation process. The installation process will ask you what software to install and after making your selection, the installation process will run automatically and install and configure the all software making it easy for your to begin working with configuration and programming of Brodersen RTU32 Series products.

### 2.2 WorkSuite License

The WorkSuite tool requires a license to configure and program RTUs. Without a license the software package works in DEMO mode.

The license is locked to a USB hardware dongle with is included in the package. In the package you find also the WorkSuite License Certificate with License id number required to enter in the License utility after installing the software.

The standard license offers the possibility to create unlimited number of I/O in the RTU application program. All variables used for drivers are counted as I/Os.

### 2.3 Compatibility with STRATON WorkBench

The Brodersen WorkSuite Packages v2.8.7.x replaces all version of STRATON WorkBench. The WorkSuite is backwards compatible with all STRATON versions and support directly any older STRATON version 5.x, 6.x, 7.x and 8.x projects.

The Brodersen WorkSuite is in fact a Brodersen version of STRATON but provide a range of new facilities:

1. One installation process for WorkSuite install all software including license key drivers and all drivers, functions and Brodersen Tools supported by the RTU32 Series products.
2. It is no more needed to install special hardware libraries, tools etc. After the installation of the WorkSuite Package you are ready to go.
3. All drivers supported by the RTU32 Series of products are available in the WorkSuite and it makes the software version management must simpler for all parties.

Important Notes:

1. If you have existing licenses for STRATON WorkBench version 8.x it is 100% compatible with the WorkSuite version 2.8.7.x. You can in other words use your license for the new Brodersen WorkSuite. That goes for ALL tag count licenses.
2. If you have older license, please contact Brodersen at [sales@brodersen.com](mailto:sales@brodersen.com) or your local representative for updates prices. Please remember to include copy of your current License Certificate.

### 2.4 User documentation and training/guideline videos

When installing the Brodersen WorkSuite package a package of User Guide and Manual are installed as well. You get access to these documents from the Help menu within the WorkSuite tool.



## WorkSuite Package Installation Guide

---

WorkSuite has in addition implemented a help function that means that you can get help by pressing F1. If no valid help opens, please check the PDF manuals available under the general WorkSuite Help menu or check our website [www.brodersen.com](http://www.brodersen.com) for documentation.

We always recommend that you use the Brodersen Training/Guideline Videos. They are found by visiting:

**[www.youtube.com/brodersensystems](http://www.youtube.com/brodersensystems)**

Here you find step by step guidelines with details how to getting started and how to setup drivers etc.



### 3 Installation

#### 3.1 System Requirements

The PC has minimum system requirements for both software and hardware. These requirements must be met in order for the WorkSuite software to operate as expected.

WorkSuite supports the following Microsoft Windows operating systems:

- Windows 10
- Windows 8 & 8.1
- Windows 7 Professional, Enterprise, and Ultimate
- Windows Vista Business, Enterprise, and Ultimate
- Windows Server 2012
- Windows Server 2008 R2
- Windows Server 2008
- Windows Server 2003 (Service Pack 2)

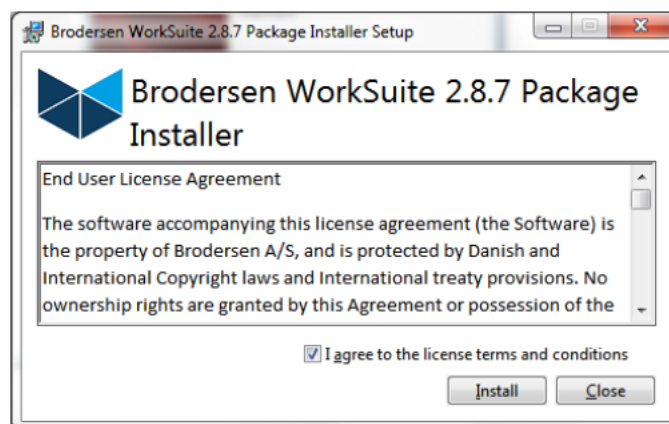
WorkSuite requires the following hardware at a minimum:

- 2.0 GHz Processor
- 3 GB installed RAM
- 500 MB available disk space
- Ethernet Card
- Free USB port for license dongle

#### 3.2 Installation process

Insert the Installation CD in your CD/DVD drive. The installation menu will start automatically. If not started automatically then enter your CD/DVD driver and run the application: BrodersenWorkSuitex.x.x.PackageInstaller.exe.

When the installation starts read through the End User License Agreement and select Install:

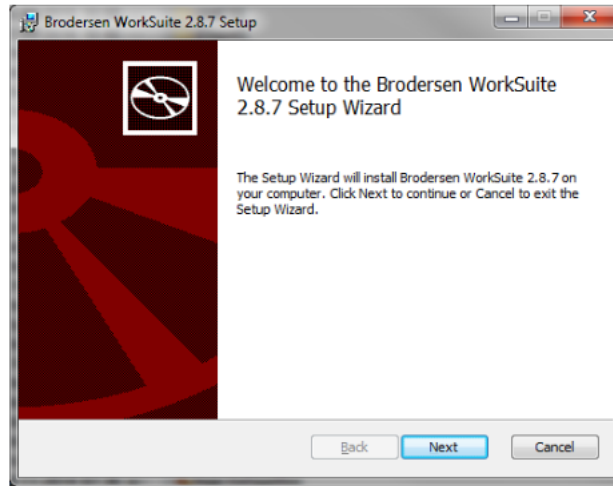




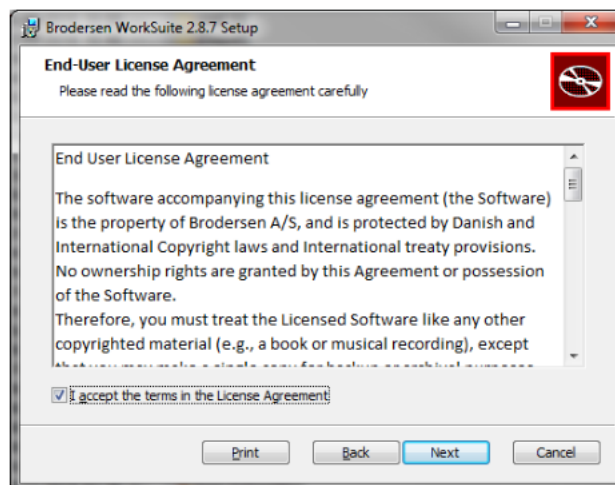


The installation process starts and prepares your PC with the necessary software components required to run the WorkSuite.

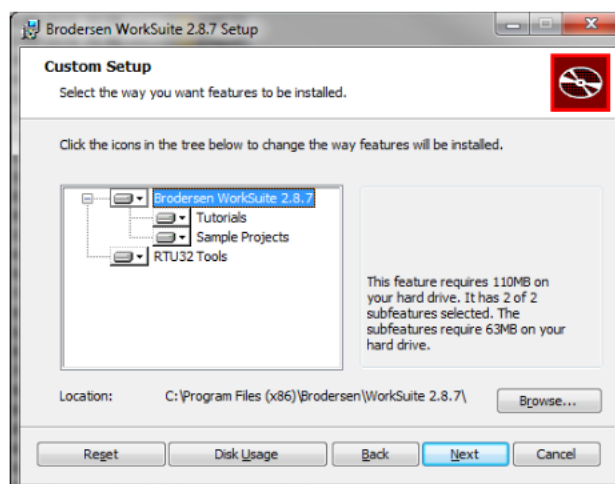
When done you will be prompted to start the installation of the WorkSuite Configuration and Programming Tool. Just select next to proceed:



Again you will be asked to accept the terms and conditions for using the Brodersen software. Mark to agree and select Next to proceed the installation:



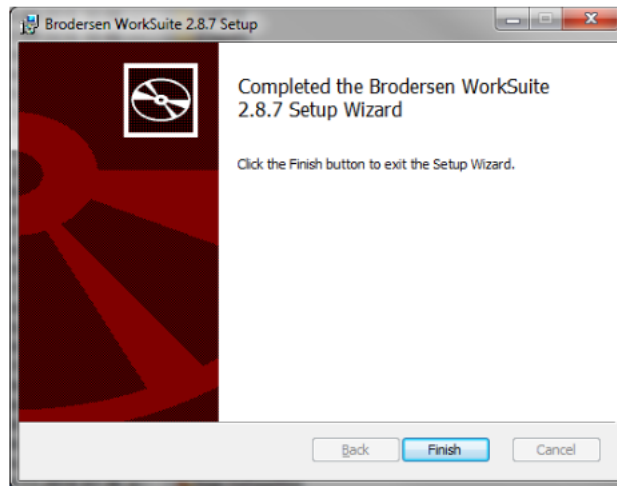
Next step is to select the software you want to install:



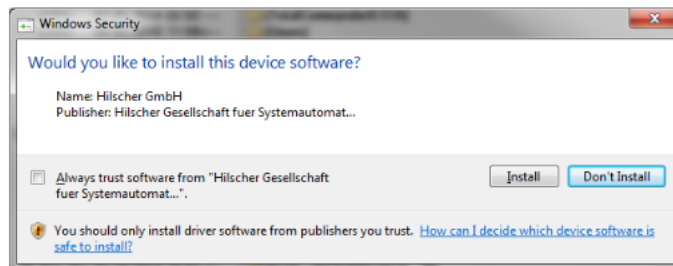




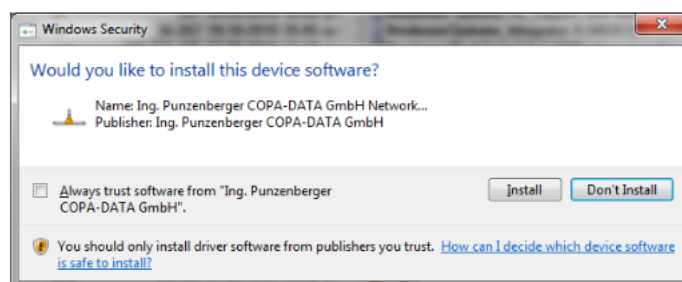
After selecting Install in the next popup window the installation process will go on. When installation of WorkSuite is finalised a popup windows tell you that installation of the WorkSuite Configuration and Programming Tool is completed:



Now the support for “Hilscher cifX Device driver” will be installed – just press “Install”:

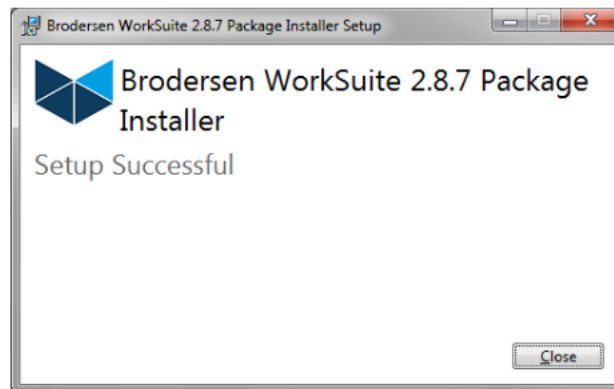


Now press “Install” in order to install the “Copa-Data Multiple Network Protocol” driver:





And after that the Package Installer will inform you that the installation process is successful and finished:



Now you are ready start working with your new Brodersen WorkSuite software.

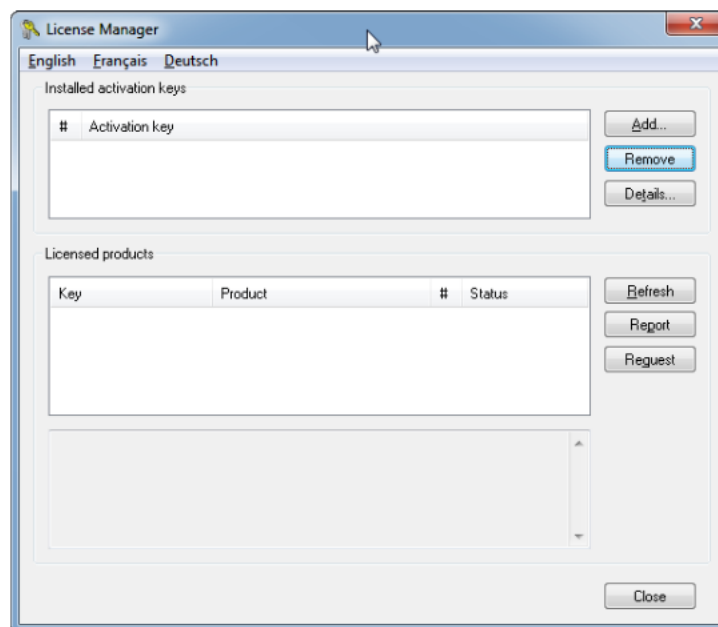
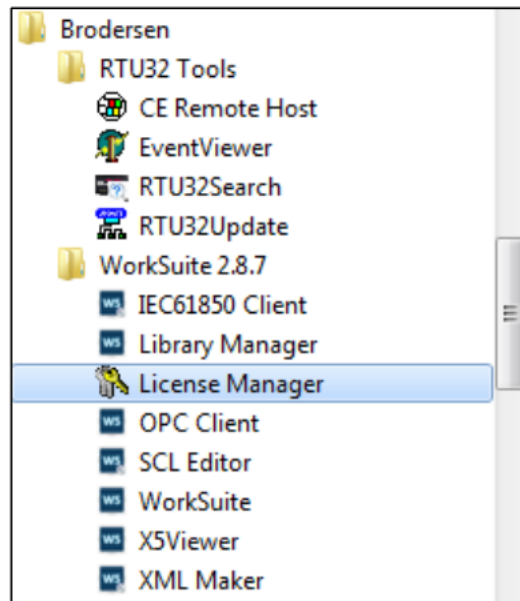


### 3.3 Install your license key code

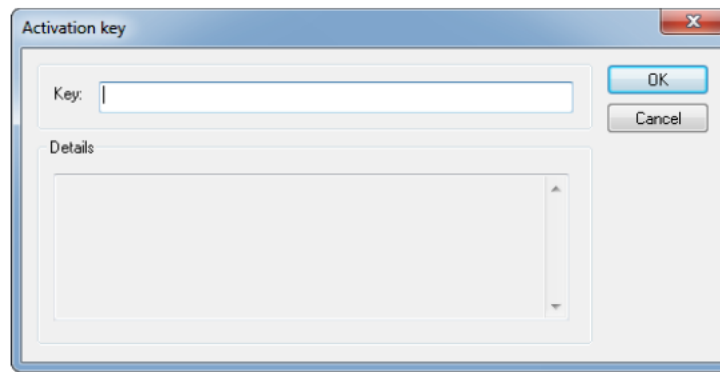
Next step is to activate the license for your software. Find the USB dongle key included in the package and place it in a free USB interface of your PC/laptop. The drivers for the USB dongle should already be installed on your PC.

Find the Software License Certificate in the CD/DVD package and notice where license code is.

Select Start – All Programs – Brodersen – WorkSuite2.8.7 – and start the License Manager:

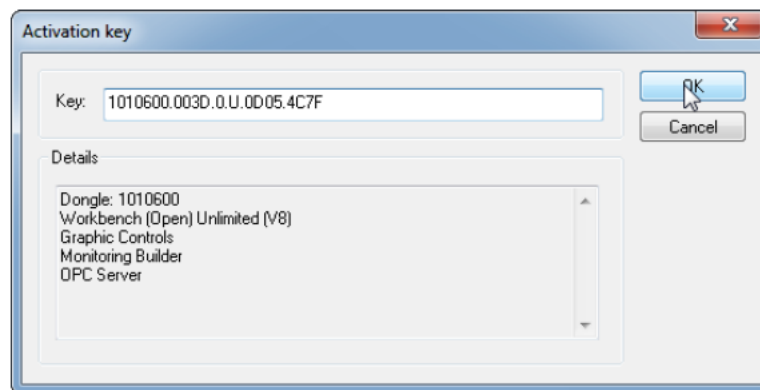


Select Add... and enter your license code – note that the first digit in the license code has the same number as the label on your USB dongle key.



When adding your license code, the window should report the license type as shown below. A standard license should report:

- Dongle: xxxxxxxx
- Workbench xxxxx
- Graphic Controls



By selecting OK your license is now activated.

If you do not get any details listed when entering your license code, please check:

1. That you have entered the code 100% as defined in the License Certificate
2. The you have no extra spaces
3. That the license code first digit comply with the first digits on the dongle



## 4 RTU32 Utilities and System Event Log

### 4.1 General

To help you Brodersen provide some utility programs for RTU32 on the WorkSuite package. The tools include;

- Software Bulk Update Tool
- RTU32 Search Tool
- EventViewer for RTU32 maintenance and configuration and EventViewer for RTU32 system log monitoring
- Remote Display Tool

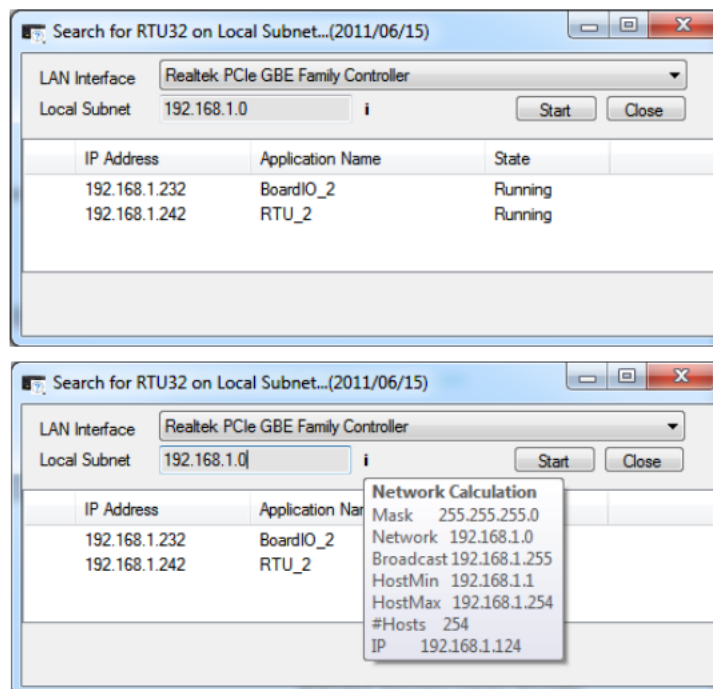
### 4.2 RTU32 Software Bulk Update Tool

See the Bulk Update Tool User Guide on CD for details.

### 4.3 RTU32 Search Tool

The RTU Search Tool is used to find RTUs on a Ethernet network. It will search using the network card/interface you define under LAN Interface. Be careful that you select the right one before you start the search procedure.

The Local Subnet will automatically detect the network details and if you place your cursor on the “i” you will get network details.



When you start the search process, the network will be scanned for Brodersen RTUs. Only RTUs with running PLC application will answer. If you select an RTU on the list of RTUs found on the network and right-click, you will be able to open either the Webpage or the EventViewer (status Log info).



### 5 History

The table below highlights changes and enhancements made between the versions.

Version	Date	Release level	Details
2.8.7.736	August 2015	First release	
2.8.7.786	December 2015	Second release	<ul style="list-style-type: none"><li>- DNP3 Slave updated to version 3.1.55.723</li><li>- DNP3 Master updated to version 7.1.0.694</li><li>- MQTT Client added version 1.1.60.772</li></ul>

This document is updated at version 2.8.7.786 and if you get a newer version of WorkSuite, you can contact Brodersen to get latest update details.