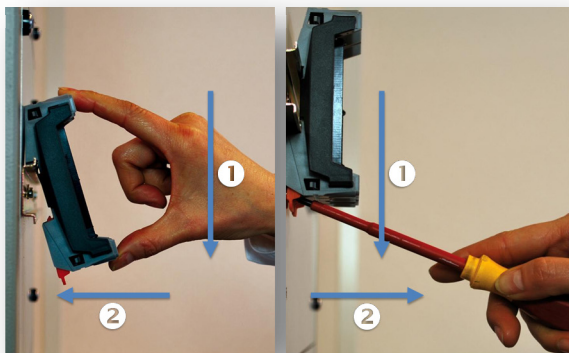


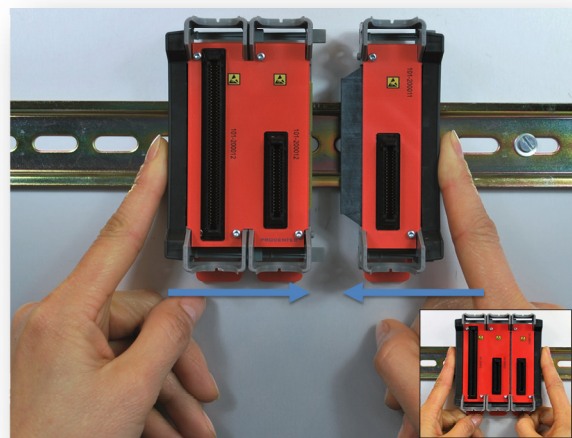
## Technical Data - Head Station 1A/1B/1C

Technical Data - Head Station 1A/1B/1C	
<b>Type differences</b>	
Head Station 1A Head Station 1B Head Station 1C <i>Hardware is identical with all types</i>	No ProfiTrace OE ProfiTrace OE for 2 PROFIBUS networks ProfiTrace OE for 4 PROFIBUS networks + ProfiTrace 2 live streaming + OPC
<b>Backplane</b>	
Modules Current available for the backplane PROFIBUS networks Compatible backplane units	32 (10 high speed modules positioned in the first 10 slots) 2,5 A 4 101-200023, 101-200012
<b>Power supply specifications</b>	
Nominal supply voltage Current consumption Power Reverse polarity protection Redundant power supply Wire diameter	10,8..26,4 VDC 800 mA (fully loaded) 20 W Yes Yes < 2,5 mm <sup>2</sup>
<b>Ethernet</b>	
Connector Cable length Link speed MAC address Supported protocols  Default IP address after reset/purchase Connections	RJ 45 Max. 100 m 10 / 100 Mbps 9C.B2.06.xx.xx.xx (label on the side of the Head Station) HTTP, FTP, SMTP, TELNET, DHCP  <b>192.168.1.254</b> 20 simultaneous web server clients
<b>Web browsers</b>	
Firefox Internet Explorer Google Chrome	2.0 (24 October 2006) 6.0 (27 Augustus 2001) 1.0 (24 April 2009)

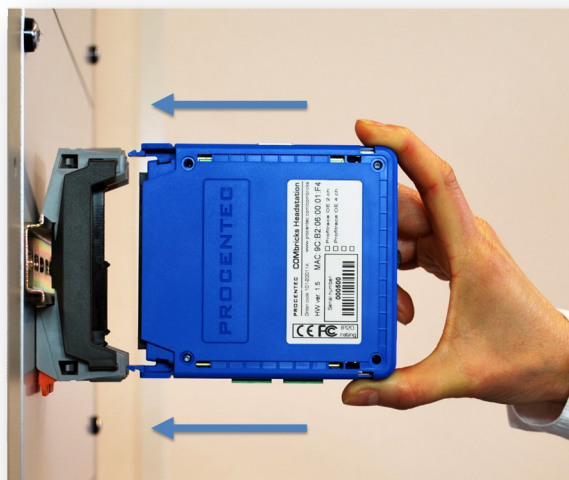
Technical Data - Head Station 1A/1B/1C	
<b>SD Card</b>	
Types Size	SD and SDHC Max. 32 GB (2 GB is provided)
<b>Others</b>	
MTBF Audio jack and Relay contact	To be defined Not supported yet
<b>PROCENTEC</b> Turfschipper 41 2292 JC WATERINGEN (NL)	<b>Tel.: +31-174-671800</b> <b>Fax: +31-174-671801</b> <b>Email: info@procentec.com</b>



Mounting and un-mounting backplanes



Adding additional backplanes



Inserting modules



Powering the Head Station