

PROCENTEC

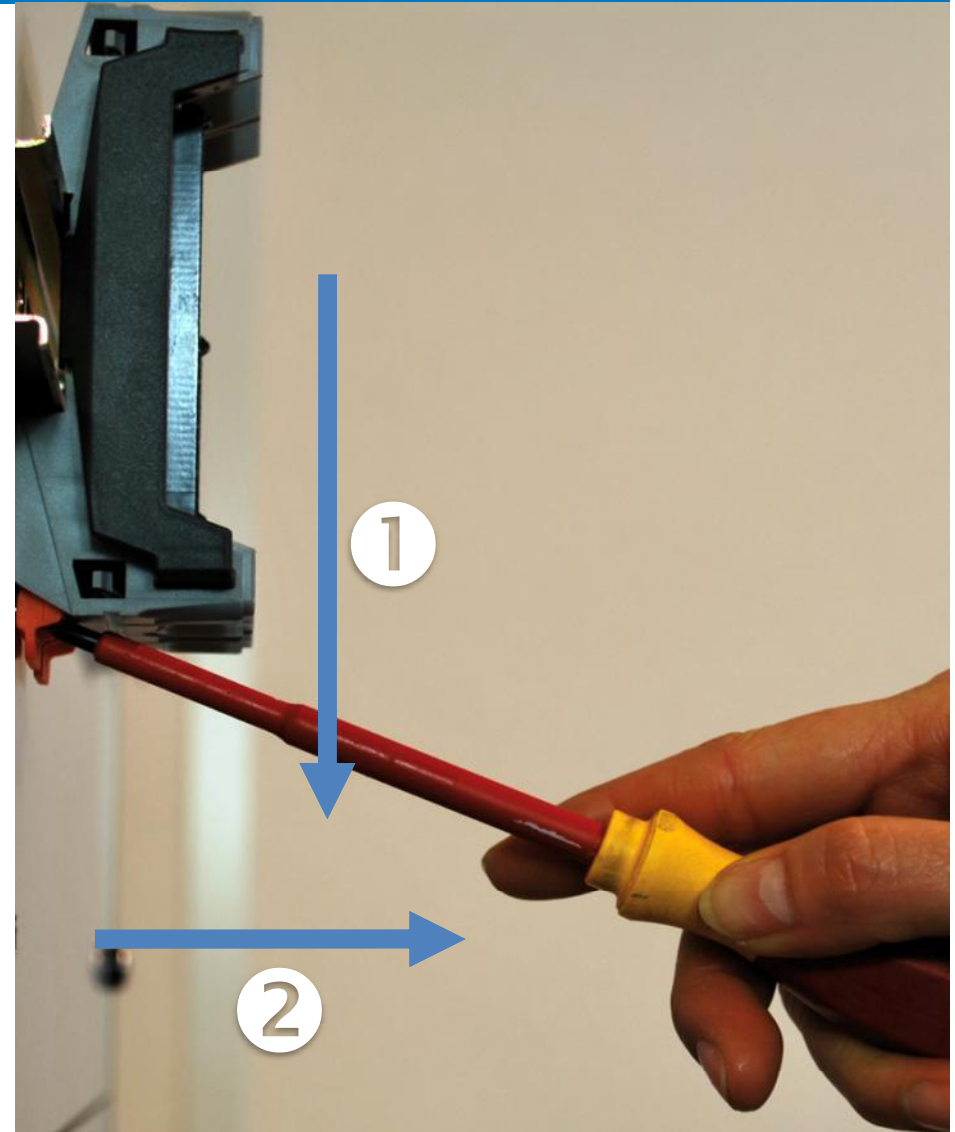
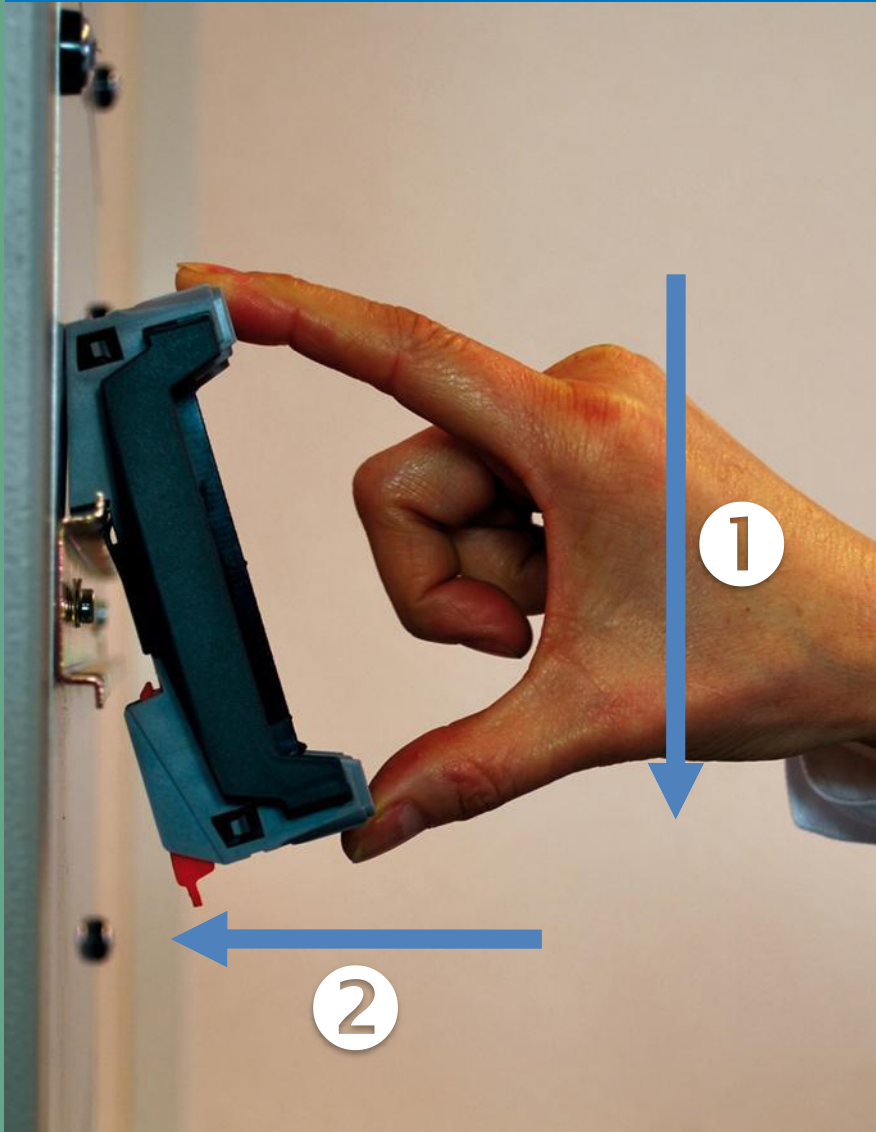
The PROFIBUS and PROFINET Company



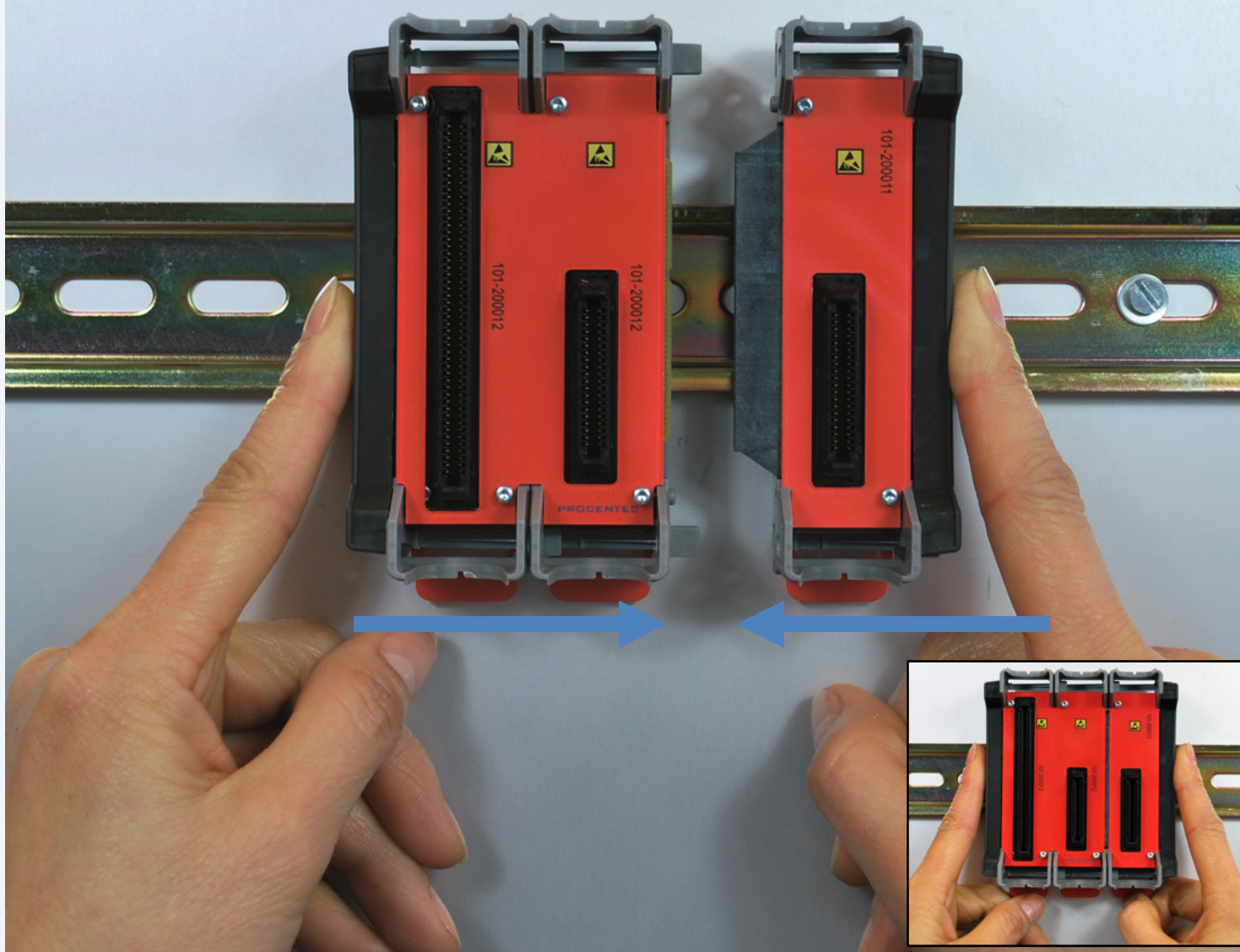
COMbricks
PROFI PROFI
BUS NET

COMbricks – Installation

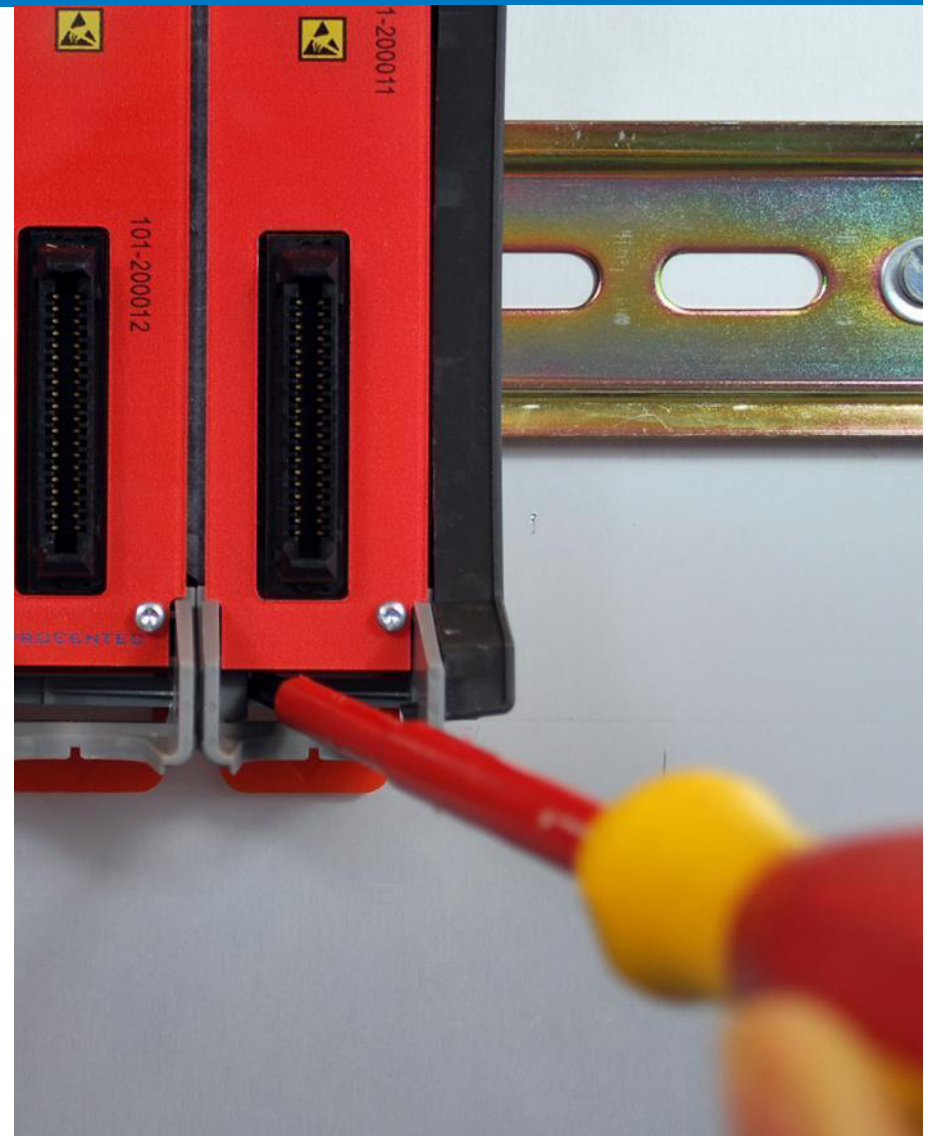
(Un-)Mounting the backplane



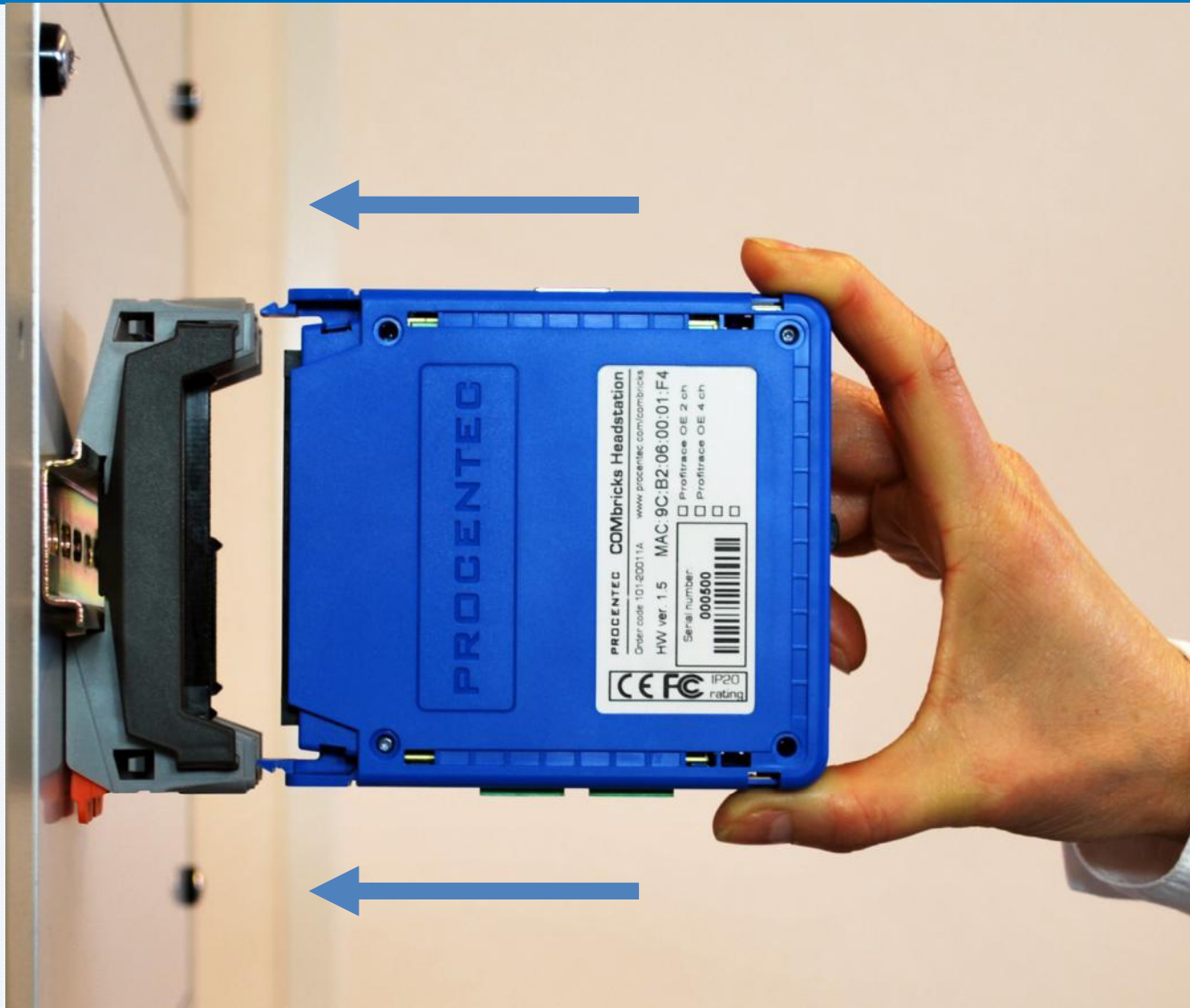
Adding backplane units



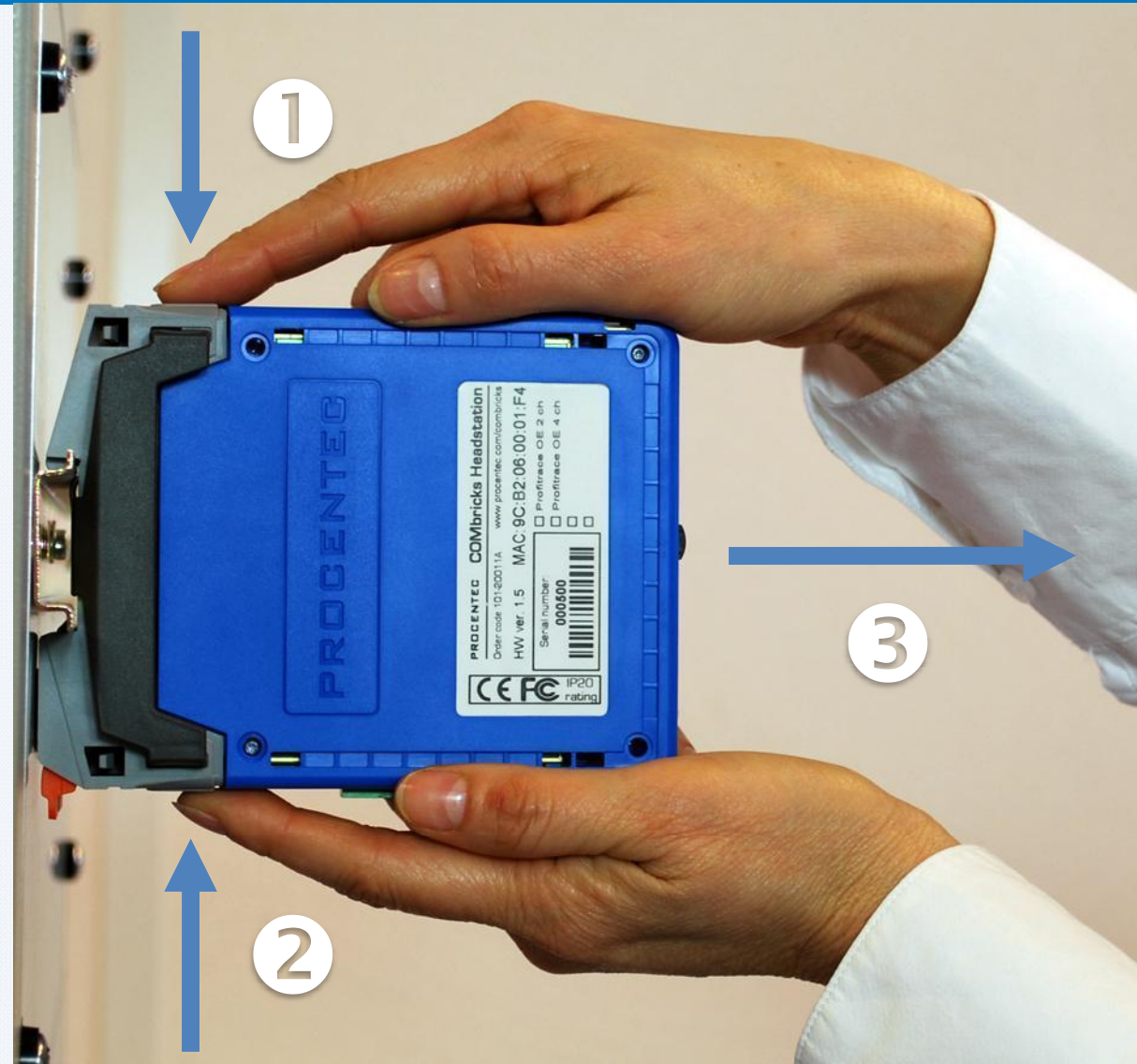
Detaching backplane units



Inserting modules



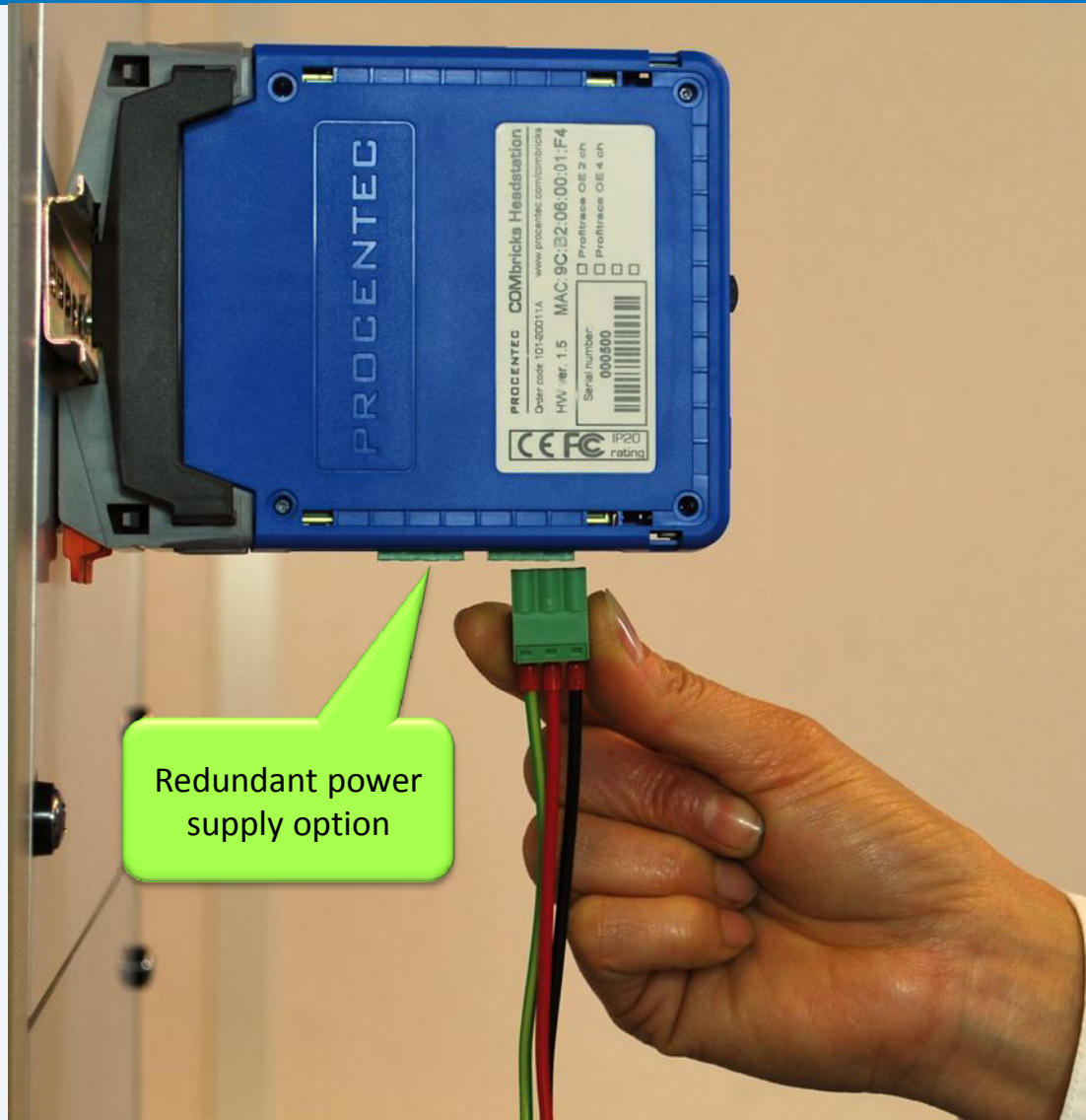
Removing modules



Wiring Ethernet



Powering the Head Station



Redundant power supply option

Discovery Tool



COMbricks Discovery Tool - V1.2.0 - PROCENTEC

File Action Help

Scan and configuration functions

Station type	Serial number	Sw rev.	Hw rev.	MAC address	IP address	Uptime
COMbricks Head Station Type 1	2010370001	V0.103b	V1.0	9C:B2:06:00:00:01	192.168.1.231	
COMbricks Head Station Type 1C	000060	V1.237	V1.5	0C:B2:06:00:00:3C	192.168.1.225	0 days, 5:09:06
COMbricks Head Station Type 1	000069	V1.238	V1.5	0C:B2:06:00:00:45	192.168.1.238	0 days, 2:31:40
COMbricks Head Station Type 1	000080	V1.221	V1.5	9C:B2:06:00:00:50	192.168.1.253	1 days, 1:34:56

Head Stations

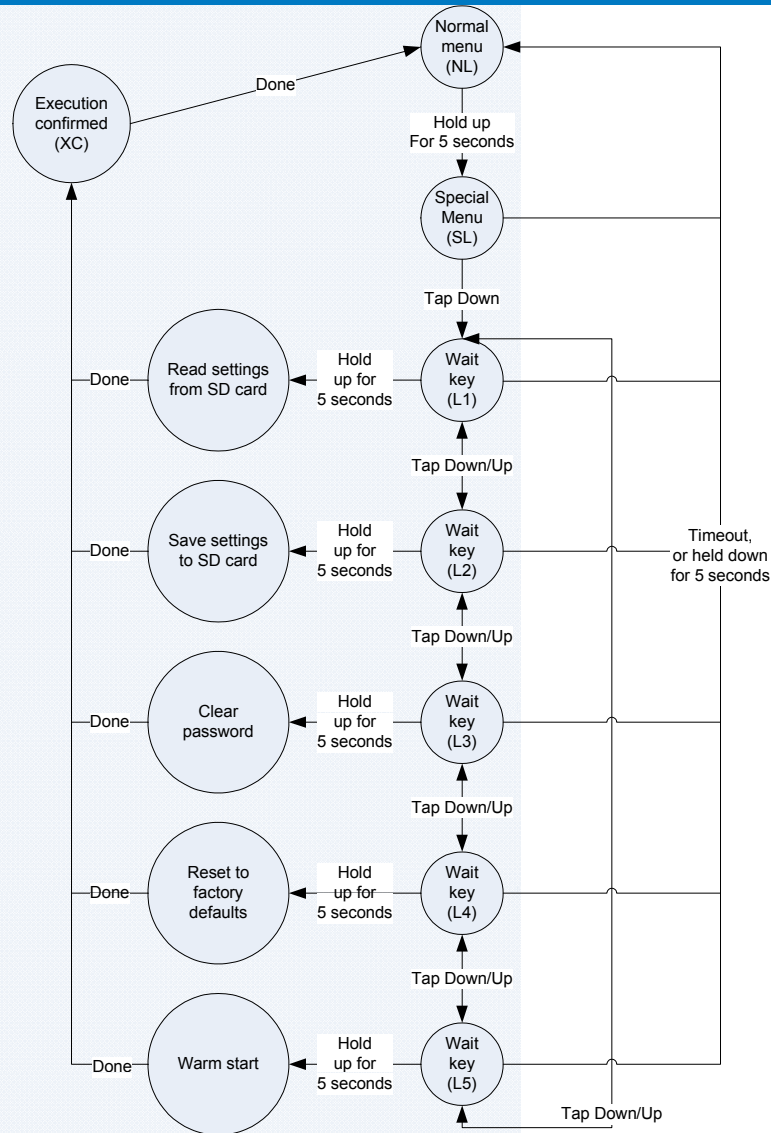
MAC and IP addresses

4 devices found.

Menu switch



Menu of the Head Station



LED behaviour

SL	All LEDs Blinking
L1	RDY Blinking
L2	ETH Blinking
L3	SF Blinking
L4	IOF Blinking
L5	USB Blinking
XC	LED walk through all the LEDs

Firmware update connector



Firmware update software



COMbricks headstation firmware update tool V1.5 (c) 2011 PROCENTEC

Steps to put the COMbricks headstation in firmware update mode:

1. Remove all power from the headstation.
(also remove the USB cable if connected)
2. While holding down the navigation button, re-apply the power.
(The red SF & IOF leds should now blink)
3. Connect the mini-usb cable to the headstation (and to a USB port on the PC).
(The green USB led should go on)

Current status: **Ok, COMbricks headstation connected and in firmware update mode.**



Start update

COMbricks is connected to USB and in the update mode

Click here to browse to the .pkg file

Warning

COMbricks is restarting

DO NOT remove the power until the led animation is finished!!

(this takes approx 3 minutes)

Close

This window can be closed directly, but wait until COMbricks is ready (check LEDs)

PROCENTEC

The PROFIBUS and PROFINET Company



COMbricks
PROFI PROFI
BUS NET

COMbricks – Installation